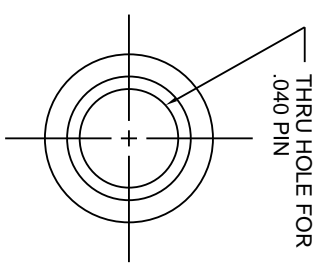
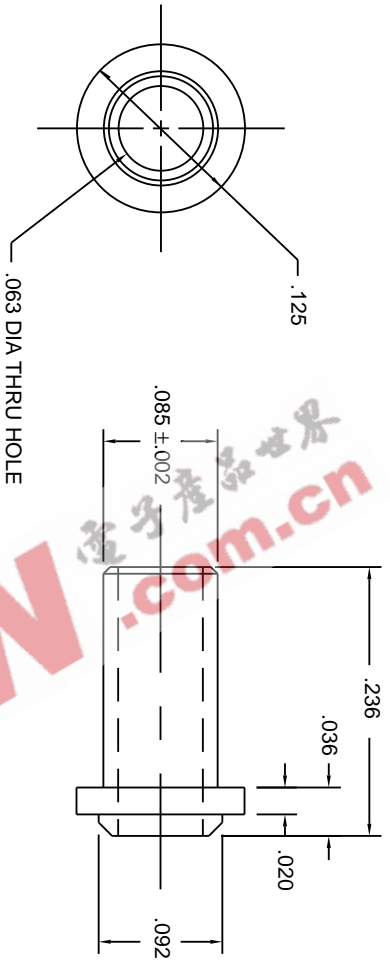


THIS DOCUMENT AND THE DATA DISCLOSED
 HEREIN OR HERewith IS NOT TO BE REPRODUCED,
 USED, OR DISCLOSED IN WHOLE OR IN PART
 TO ANYONE WITHOUT PERMISSION OF VICOR CORP.



NOTES:

1. MATERIAL: BRASS QQ-B-626 ALLOY 360 1/2 HARD. ELECTRO-TIN PER MIL-T-10727, TYPE I WITH BERYLLIUM COPPER SPRING INSERT CAPTIVATED.
2. CONCORD P/N 09-9002-1-04 OR APPROVED EQUIV.



Ø.040 P.C.
 PIN SOCKET

| | | | |
|--|--|---------------------------------|----------------------|
| DRAWN: | | TOLERANCES (EXCEPT AS NOTED) | |
| CHECKED: | | .XX ± .01 | DRAWING NO. |
| APPD: | | .XX ± .005 | 01827 |
| ALL DIMENSIONS ARE IN INCHES (MILLIMETERS) | | FRACT ± 1/64 | REV. |
| DO NOT SCALE DRAWING | | ANGLES ± 1° | 2 |
| NEXT ASSY: | | SCALE: 10X | SHEET _____ OF _____ |