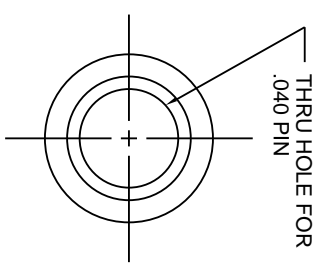
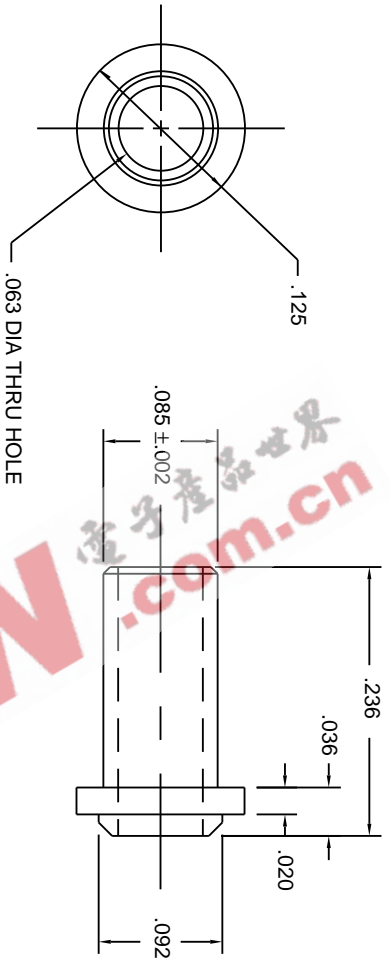


THIS DOCUMENT AND THE DATA DISCLOSED
 HEREIN OR HERewith IS NOT TO BE REPRODUCED,
 USED, OR DISCLOSED IN WHOLE OR IN PART
 TO ANYONE WITHOUT PERMISSION OF VICOR CORP.



NOTES:

1. MATERIAL: BRASS QQ-B-626 ALLOY 360 1/2 HARD. ELECTRO-TIN PER MIL-T-10727, TYPE I WITH BERYLLIUM COPPER SPRING INSERT CAPTIVATED.
2. CONCORD P/N 09-9002-1-04 OR APPROVED EQUIV.



Ø.040 P.C.
 PIN SOCKET

DRAWN:		TOLERANCES (EXCEPT AS NOTED)	
CHECKED:		.XX ± .01	DRAWING NO.
APPD:		.XX ± .005	01827
ALL DIMENSIONS ARE IN INCHES (MILLIMETERS)		FRACT ± 1/64	REV.
DO NOT SCALE DRAWING		ANGLES ± 1°	2
NEXT ASSY:		SCALE: 10X	SHEET _____ OF _____