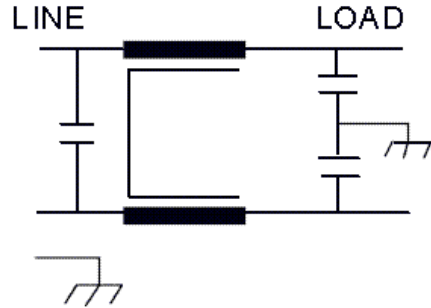


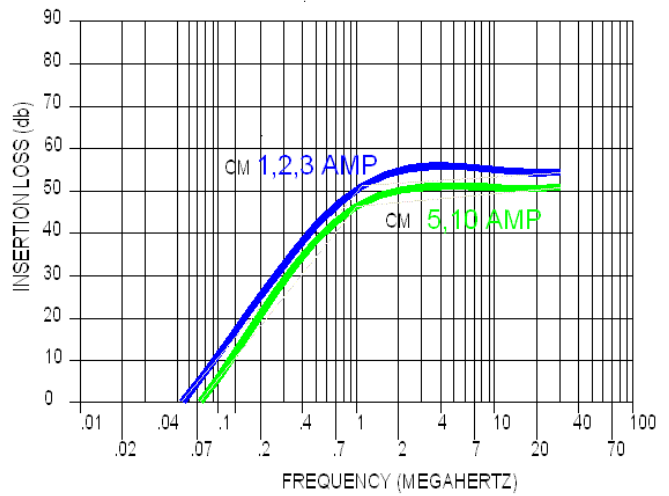


# 0220 SERIES

The 220 Series is designed to provide common-mode filtering for computer peripheral and other electronic hardware using linear power supplies.



**Operating voltage = 115/250 Vac**  
**Operating current = 1, 2, 3, 5, 10, 20, Amp**  
**Operating frequency = 50/60Hz**  
**Operating temperature = -20 to 50 o C**  
**Diel. withstanding (line - case) = 1500 Vac**  
**Diel. withstanding (line - line) = 1500 Vac**  
**Leakage current = 0.5 ma at 250 Vac, 60 Hz**  
**Max residual voltage after 1 sec. = 30 Volts**



**DIMENSIONS (INCHES)**

	A	B	C	D	E
1,2,3,5 AMP	1.75	2.13	2.50	.75	1.25
10 AMP	1.75	2.13	2.50	1.13	1.25
20 AMP	2.00	2.38	2.78	1.13	2.00

