

REVISIONS		
SYM.	DESCRIPTION	DATE
A	RELEASED	06/10/99
B	REVISED PER DCN 17245	12/12/00
C	REDRAWN PER DCN 22773	08/20/04

DASH NO	NOMINAL I.D.	NO OF CARRIERS PER LAYER	NO OF ENDS PER LAYER	CURRENT RATING AMPS	LBSY 100 FT
031	.031	24	24	7.0	.20
062	.062	24	48	11.0	.40
078	.078	24	72	16.0	.60
109	.109	24	96	19.0	.83
125	.125	24	120	25.0	1.03
156	.156	24	240	40.0	2.09
171	.171	24	168	32.0	1.43
188	.188	24	192	33.0	1.63
203	.203	24	312	46.0	2.80
250	.250	24	384	53.0	3.45
375	.375	48	384	53.0	3.95
500	.500	48	528	62.0	4.77
625	.625	48	720	85.0	5.94
781	.781	48	864	88.0	7.35
937	.937	64	640	65.0	5.83
1000	1.000	64	768	90.0	7.50
1250	1.250	72	792	T80	T80
1375	1.375	72	864	T80	T80
1500	1.500	72	936	T80	T80
2000	2.000	96	1152	T80	T80
2500	2.500	96	1248	T80	T80



DRAWN	T. LE	06/09/99
CHECK	P. D.	06/09/99
ENGR	R. PAINTER	06/09/99

UNLESS OTHERWISE SPECIFIED DIMENSIONS ARE IN INCHES
TOLERANCES:
FRACTIONS ± 1/16
DECIMALS ± .03
ANGLES ± 2°

DO NOT SCALE THIS DRAWING
B/F 99-7281 P/C 100

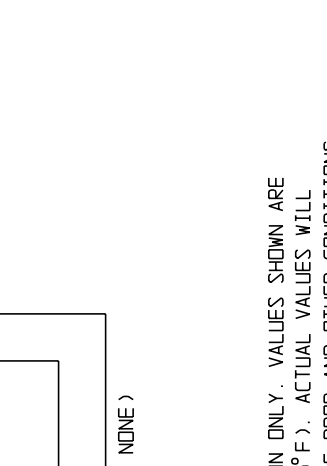
RELEASE DATE	06/10/99
NON REPAIRABLE COMMERCIAL ITEM	

CODE IDENT. NO	06324
SCALE	N/A
WEIGHT	N/A
SHEET	1 OF 1

**GLENAIR, INC.**  
 1211 AIR WAY - GLENDALE - CALIFORNIA 91201  
 CAD 1995°

BRAID, SINGLE LAYER TUBULAR, SILVER/COPPER

REV. C 100-002



- NOTES:
- DIRECT CURRENT RATING ARE GIVEN FOR INFORMATION ONLY. VALUES SHOWN ARE FOR UNINSULATED BRAID IN FREE AIR, AT 30°C (86°F). ACTUAL VALUES WILL DEPEND ON PERMISSIBLE TEMPERATURE RISE, VOLTAGE DROP AND OTHER CONDITIONS OF SERVICE. VALUES SHOULD BE DE-RATED IF THE BRAID IS INSULATED OR IN CLOSE CONTACT WITH OTHER COMPONENTS.
  - MINIMUM ORDER LENGTH: 100 FEET, FOR LONGER LENGTHS BRAID WILL BE SUPPLIED IN RANDOM LENGTHS, NR. OF REELS & SIZE MFG. OPTION. CONTINUOUS LENGTHS MUST BE SPECIFIED BY CUSTOMER.
  - MATERIAL/FINISH:  
 BRAID - COPPER/SILVER PLATED I. A. W. 00-8-575B, ASTM B298 CLASS C  
 LANYARD - SYNTHETIC FIBER