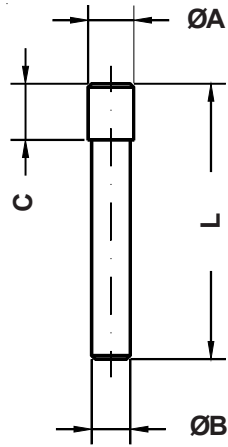


TABLE I: WIRE HOLE PLUG FOR CONTACT INSERTS
PART NUMBERS, CONTACT SIZES, DIMENSIONS & COLOR

| Part Number | Contact Size | ØA | ØB | C | L | Color |
|-------------------------|--------------|------|------|-----|------|-----------------|
| 10 - 305045 - 16 | 16S - 16 | 2.6 | 2.2 | 3.2 | 15.7 | Blue |
| 10 - 305045 - 8 | 8 | 7.6 | 6.4 | 3.1 | 11.8 | White |
| 10 - 305045 - 4 | 4 | 10.9 | 9.7 | 3.1 | 11.8 | Green |
| 10 - 305045 - 0 | 0 | 15.0 | 13.5 | 4.3 | 14.3 | Black |
| 10 - 305045 - 01 | 0M | 16.0 | 14.5 | 4.3 | 14.5 | Black |
| 10 - 101033 - 13 | 12 | 4.6 | 3.7 | 3.2 | 11.9 | Giallo / Yellow |



10-305045-16

Application Notes:

1. Wire hole plug for contact inserts.

