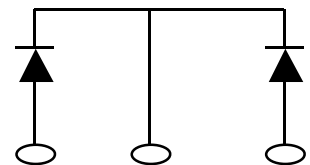


POWER PRODUCT SPECIFICATION

30 A 400V COMMON CATHODE DUAL ULTRAFAST RECTIFIER

FEATURES:

- QUALIFIED PARTS LISTING MIL-PRF-19500/617
- LOW FORWARD VOLTAGE DROP
- ISOLATED HERMETICALLY SEALED PACKAGE
- RUGGED CERAMIC FEEDTHROUGH CONSTRUCTION



Absolute Maximum Ratings:

Symbol	Parameter	Limit	Unit
VRWM *1	Peak Repetitive Reverse Voltage	400	Vdc
VRRM *1	Working Peak Reverse Voltage	400	Vdc
VR *1	DC Blocking Voltage	400	Vdc
IO *1	Average Forward Current, TC= 100 °C	15	Adc
IFSM *1	Peak Surge Current	150	A(pk)
ROJC *1	Thermal Resistance, Junction to Case	2.0	°C/W
ROJA *1	Thermal Resistance, Junction to Ambient	40	°C/W
Tj	Operating Junction Temperature Range	-65 to +200	°C
Tstg	Storage Temperature Range	-65 to +200	°C

NOTE 1: EACH INDIVIDUAL DIODE

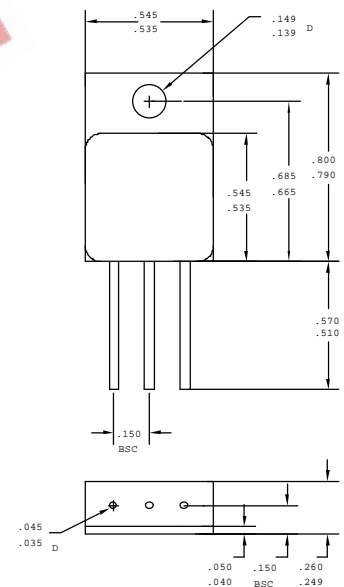
Electrical Characteristics (Per Diode) @ 25°C unless otherwise specified

Symbol	Parameter	Conditions	Min	Max	Unit
Vf1	Forward Voltage	If = 10A(pk)		1.35	Vdc
Vf2	Forward Voltage	If = 20A(pk)		1.55	Vdc
IR1	Reverse Current	VR = 320Vdc		50.0	uA
IR2	Reverse Current	VR = 320Vdc TC=100° C		5.0	mA
Vf3	Forward Voltage	If = 10A(pk), TA= -65°C		1.45	Vdc
t _{rr}	Reverse Recovery Time	Cond. B, If=.5Adc, IR=1A, IRR=.25A		35	ns
C _j	Junction Capacitance	VR= 10Vdc, f=1MHz		150	pF

Seritech reserves the right to make changes to any product design, specification or other information at any time without prior notice.

MSC1001 2/9/99

PHYSICAL DIMENSIONS



Package Designation: TO-254
PIN # 1: ANODE
PIN # 2: CATHODE
PIN # 3: ANODE