

# .100" and .100" × .100" Pin Strip Header

Straight & Right Angle, Solder Tail

2400 Series



- One and two row versions
- Straight and right angle versions
- Break to length for faster delivery, lower inventory costs, and faster prototyping
- Tapered tip does not cut the socket wipe during insertion, reducing operational failures and repairs
- Solder standoffs facilitate wash of flux residue, reducing costly rework
- Board pin retention feature available

Date Modified: December 28, 1999

TS-0767-03  
Sheet 1 of 3

14

## Physical

### Insulation

Material: Glass Filled Polyester (PBT)  
Flammability: UL 94V-0  
Color: Gray

### Contact

Material: Copper Alloy  
Plating  
Underplate: 100  $\mu$ " [ 2.54  $\mu$ m ] Nickel — QQ-N-290, Class 2  
Wiping Area: 30  $\mu$ " [ 0.76  $\mu$ m ] Gold — MIL-G-45204, Type II, Grade C  
Solder Tails: 200  $\mu$ " [ 5.08  $\mu$ m ] 90/10 Tin Lead — MIL-P-81728

## Electrical

**Current Rating:** 3 A  
**Insulation Resistance:**  $> 1 \times 10^9 \Omega$  at 500 Vdc  
**Withstanding Voltage:** 1000 Vrms at Sea Level

## Environmental

**Temperature Rating:**  $-55^\circ\text{C}$  to  $+105^\circ\text{C}$

UL File No.: E68080

### 3M Interconnect Solutions Division

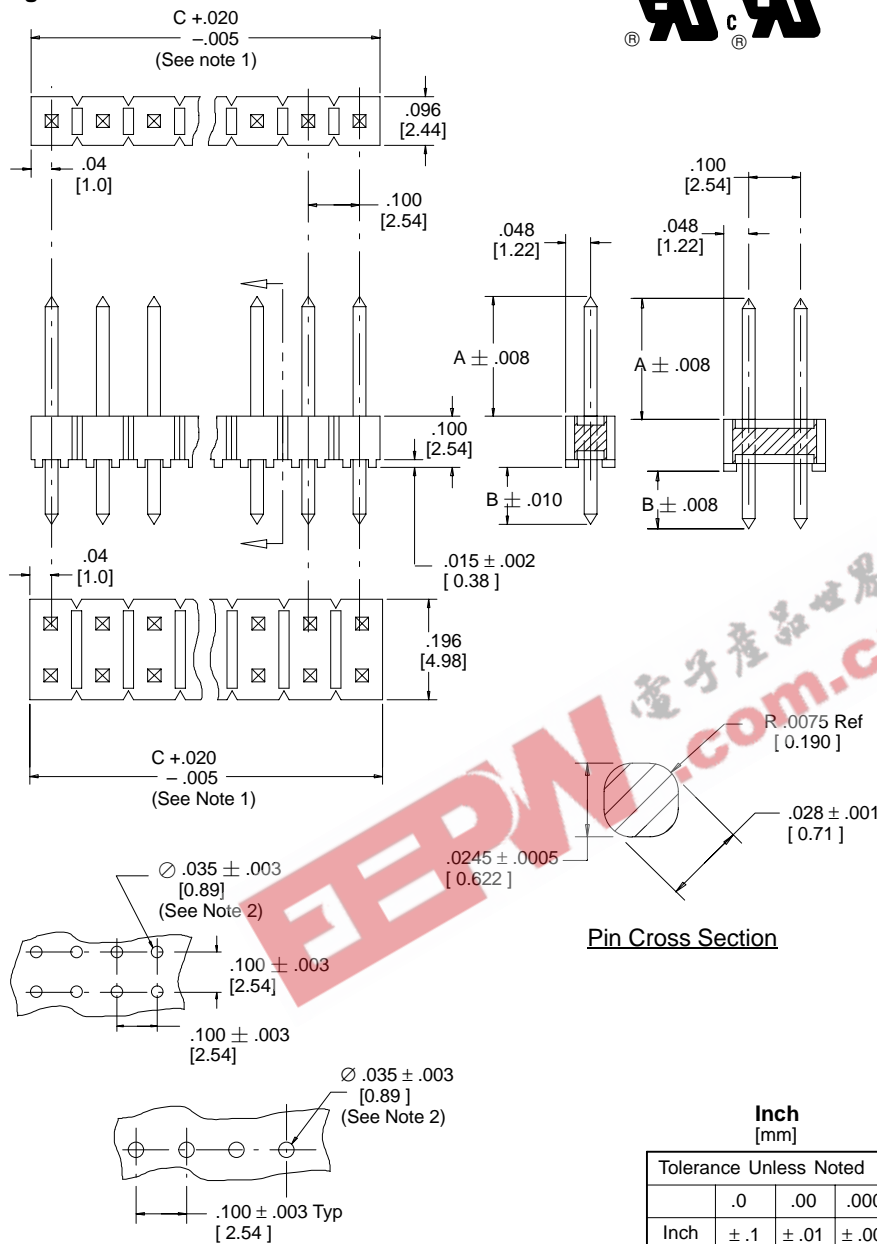
6801 River Place Blvd.  
Austin, TX 78726-9000

For technical, sales or ordering information call  
**800-225-5373**

# .100" and .100" × .100" Pin Strip Header Straight & Right Angle, Solder Tail

2400 Series

## Straight



| Pin Quantity |         | Dimension C  |
|--------------|---------|--------------|
| One Row      | Two Row |              |
| 01           |         | 0.09 [2.3]   |
| 02           | 04      | 0.19 [4.8]   |
| 03           | 06      | 0.29 [7.4]   |
| 04           | 08      | 0.39 [9.9]   |
| 05           | 10      | 0.49 [12.4]  |
| 06           | 12      | 0.59 [15.0]  |
| 07           | 14      | 0.69 [17.5]  |
| 08           | 16      | 0.79 [20.1]  |
| 09           | 18      | 0.89 [22.6]  |
| 10           | 20      | 0.99 [25.1]  |
| 11           | 22      | 1.09 [27.7]  |
| 12           | 24      | 1.19 [30.2]  |
| 13           | 26      | 1.29 [32.8]  |
| 14           | 28      | 1.39 [35.3]  |
| 15           | 30      | 1.49 [37.8]  |
| 16           | 32      | 1.59 [40.4]  |
| 17           | 34      | 1.69 [42.9]  |
| 18           | 36      | 1.79 [45.5]  |
| 19           | 38      | 1.89 [48.0]  |
| 20           | 40      | 1.99 [50.5]  |
| 21           | 42      | 2.09 [53.1]  |
| 22           | 44      | 2.19 [55.6]  |
| 23           | 46      | 2.29 [58.2]  |
| 24           | 48      | 2.39 [60.7]  |
| 25           | 50      | 2.49 [63.2]  |
| 26           | 52      | 2.59 [65.8]  |
| 27           | 54      | 2.69 [68.3]  |
| 28           | 56      | 2.79 [70.9]  |
| 29           | 58      | 2.89 [73.4]  |
| 30           | 60      | 2.99 [75.9]  |
| 31           | 62      | 3.09 [78.5]  |
| 32           | 64      | 3.19 [81.0]  |
| 33           | 66      | 3.29 [83.6]  |
| 34           | 68      | 3.39 [86.1]  |
| 35           | 70      | 3.49 [88.6]  |
| 36           | 72      | 3.59 [91.2]  |
| 37           | 74      | 3.69 [93.7]  |
| 38           | 76      | 3.79 [96.3]  |
| 39           | 78      | 3.89 [98.8]  |
| 40           | 80      | 3.98 [101.1] |

**Inch [mm]**

| Tolerance Unless Noted |     |      |       |
|------------------------|-----|------|-------|
|                        | .0  | .00  | .000  |
| Inch                   | ±.1 | ±.01 | ±.005 |

[ ] Dimensions for Reference Only

### Notes:

- This part is molded in the 40 contact quantity version. Parts that require fewer contacts are broken to length. Dimension "C" is measured from a "Molded End" to the "Center of the Break Point" beyond the desired quantity. On Pin Strips, which have break points on both ends, "C" = .100" x contact quantity per row.
- The recommended PCB hole size for the kinked tail positions on the .112" solder tail connector is .035" ± .002. Refer to TS-0971 for the number of tails kinked and the position kinked.

## Ordering Information

### 24XX-6XXXTB

Pin Quantity:  
(See Table)  
One Row (01-40)  
Two Row (04-80)

Pin Length  
(Dim A)  
1 = .235"  
2 = .318"

Tail (Dim B)  
One Row  
12=.112" Solder Tails  
13=.155" Solder Tails  
32=.112" Kinked Solder Tails

Two Row  
22=.112" Solder Tails  
23=.155" Solder Tails  
72=.112" Kinked Solder Tails

TS-0767-03  
Sheet 2 of 3

## 3M Interconnect Solutions Division

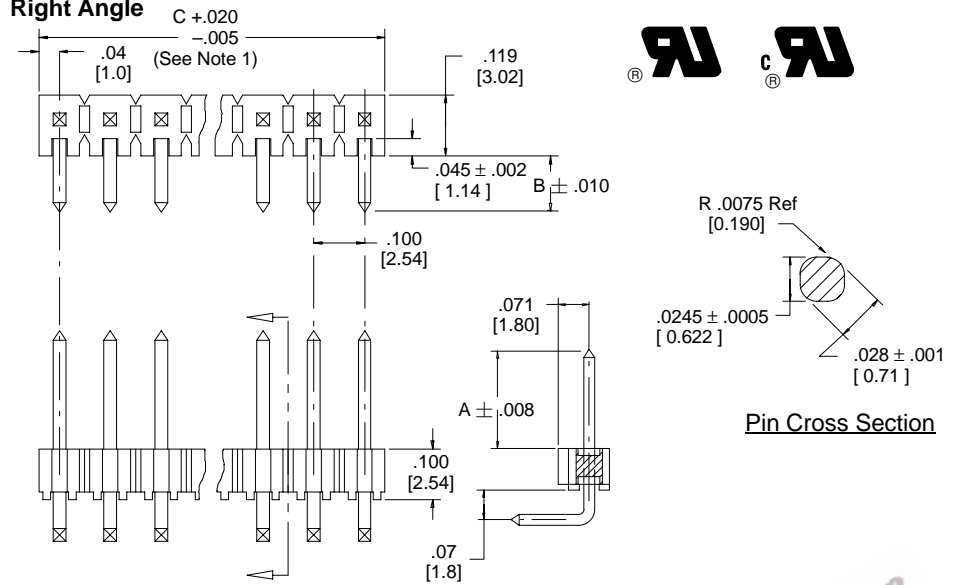
6801 River Place Blvd.  
Austin, TX 78726-9000

For technical, sales or ordering information call  
**800-225-5373**

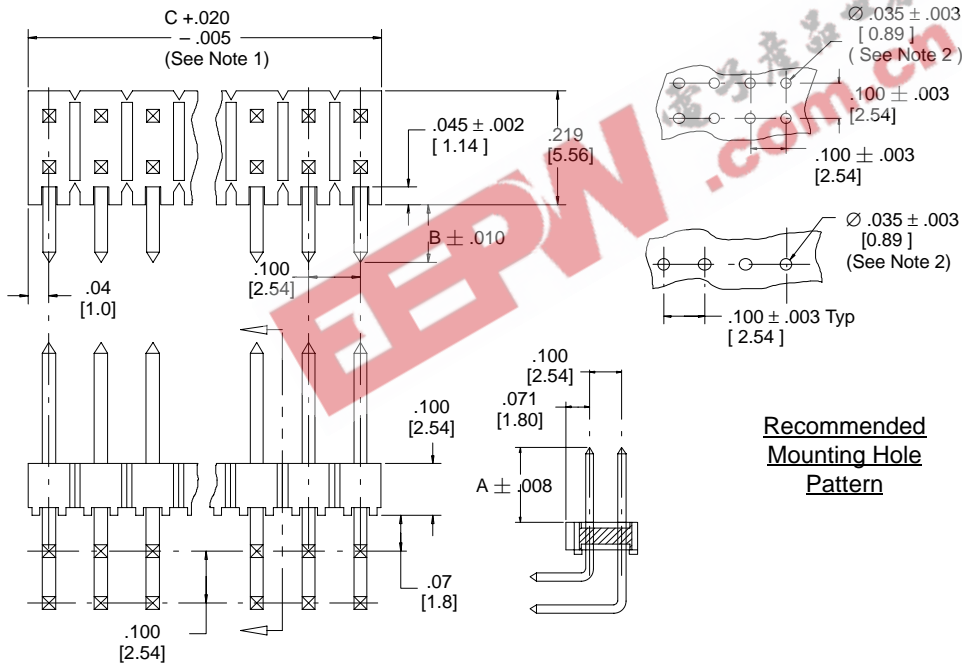
# .100" and .100" × .100" Pin Strip Header Straight & Right Angle, Solder Tail

2400 Series

## Right Angle



Pin Cross Section



Recommended Mounting Hole Pattern

**Notes:**

1. This part is molded in the 40 contact quantity version. Parts that require fewer contacts are broken to length. Dimension "C" is measured from a "Molded End" to the "Center of the Break Point" beyond the desired quantity. On Pin Strips, which have break points on both ends, "C" = .100" x contact quantity per row.
2. The recommended PCB hole size for the kinked tail positions on the .112" solder tail connector is .035" ± .002. Refer to ts-0971 for the number of tails kinked and the position kinked.

| Tolerance Unless Noted |      |       |        |
|------------------------|------|-------|--------|
|                        | .0   | .00   | .000   |
| Inch                   | ± .1 | ± .01 | ± .005 |

[ ] Dimensions for Reference only

| Pin Quantity |         | Dimension C  |
|--------------|---------|--------------|
| One Row      | Two Row |              |
| 01           | 02      | 0.09 [2.3]   |
| 02           | 04      | 0.19 [4.8]   |
| 03           | 06      | 0.29 [7.4]   |
| 04           | 08      | 0.39 [9.9]   |
| 05           | 10      | 0.49 [12.4]  |
| 06           | 12      | 0.59 [15.0]  |
| 07           | 14      | 0.69 [17.5]  |
| 08           | 16      | 0.79 [20.1]  |
| 09           | 18      | 0.89 [22.6]  |
| 10           | 20      | 0.99 [25.1]  |
| 11           | 22      | 1.09 [27.7]  |
| 12           | 24      | 1.19 [30.2]  |
| 13           | 26      | 1.29 [32.8]  |
| 14           | 28      | 1.39 [35.3]  |
| 15           | 30      | 1.49 [37.8]  |
| 16           | 32      | 1.59 [40.4]  |
| 17           | 34      | 1.69 [42.9]  |
| 18           | 36      | 1.79 [45.5]  |
| 19           | 38      | 1.89 [48.0]  |
| 20           | 40      | 1.99 [50.5]  |
| 21           | 42      | 2.09 [53.1]  |
| 22           | 44      | 2.19 [55.6]  |
| 23           | 46      | 2.29 [58.2]  |
| 24           | 48      | 2.39 [60.7]  |
| 25           | 50      | 2.49 [63.2]  |
| 26           | 52      | 2.59 [65.8]  |
| 27           | 54      | 2.69 [68.3]  |
| 28           | 56      | 2.79 [70.9]  |
| 29           | 58      | 2.89 [73.4]  |
| 30           | 60      | 2.99 [75.9]  |
| 31           | 62      | 3.09 [78.5]  |
| 32           | 64      | 3.19 [81.0]  |
| 33           | 66      | 3.29 [83.6]  |
| 34           | 68      | 3.39 [86.1]  |
| 35           | 70      | 3.49 [88.6]  |
| 36           | 72      | 3.59 [91.2]  |
| 37           | 74      | 3.69 [93.7]  |
| 38           | 76      | 3.79 [96.3]  |
| 39           | 78      | 3.89 [98.8]  |
| 40           | 80      | 3.98 [101.1] |

## Ordering Information

### 24XX-5XXXTB

Pin Quantity:  
(See Table)  
One Row (01-40)  
Two Row (02-80)

Pin Length  
(Dim A)  
1 = .235"  
2 = .318"

Tail (Dim B)  
One Row  
12=.112" Solder Tails  
13=.155" Solder Tails  
32=.112" Kinked Solder Tails

Two Row  
22=.112" Solder Tails  
23=.155" Solder Tails  
72=.112" Kinked Solder Tails

TS-0767-03  
Sheet 3 of 3

## 3M Interconnect Solutions Division

6801 River Place Blvd.  
Austin, TX 78726-9000

For technical, sales or ordering information call  
**800-225-5373**