



FEATURES

- Bobbin Format
- Up to 2.1A IDC
- 2.2µH to 220µH
- Low DC Resistance
- Surface Mounting
- Compact Size
- Tape and Reel Packaging
- Optional Integral EMI Shield

DESCRIPTION

The 2300 series is a range of bobbin wound surface mount inductors designed for use in switching power supply and power line filter circuits. The parts are suitable for any application requiring a high saturation current in a miniature surface mount footprint. Where EMI is a critical factor the devices are available with an integral ferrite EMI shield.

SELECTION GUIDE (UNSHIELDED TYPES)¹

	Nominal Inductance	Inductance Range	DC Resistance	DC Current Continuous ²	Package Style
Order Code	µH 1kHz 100mV AC	µH 1kHz 100mV AC	Ω MAX	A MAX	
232R2	2.2	1.7 - 2.8	0.029	2.10	1
233R3	3.3	2.3 - 3.9	0.044	1.80	
234R7	4.7	3.6 - 6.0	0.068	1.48	
236R8	6.8	5.1 - 8.6	0.102	1.22	
23100	10	7.6 - 12.7	0.138	1.02	
23150	15	11.3 - 18.9	0.210	0.86	
23220	22	16.8 - 28.1	0.285	0.74	
23330	33	24.6 - 41.0	0.497	0.64	
23470	47	34.6 - 57.6	0.683	0.55	
23680	68	51.0 - 85.0	0.838	0.49	
23101	100	74.2 - 124	1.281	0.43	

SELECTION GUIDE (EMI SHIELDED TYPES)¹

	Nominal Inductance	Inductance Range	DC Resistance	DC Current Continuous ²	Package Style
Order Code	µH 1kHz 100mV AC	µH 1kHz 100mV AC	Ω MAX	A MAX	
23S2R2	2.2	1.8 - 3.0	0.025	2.10	2
23S3R3	3.3	2.7 - 4.5	0.031	1.80	
23S4R7	4.7	3.8 - 6.4	0.044	1.60	
23S6R8	6.8	5.2 - 8.6	0.064	1.40	
23S100	10	7.5 - 12.6	0.087	1.18	
23S120	12	9.4 - 15.6	0.107	1.08	
23S150	15	11.4 - 19.0	0.131	0.96	
23S180	18	13.6 - 22.6	0.143	0.88	
23S220	22	16.0 - 26.7	0.175	0.80	
23S270	27	20.0 - 33.3	0.218	0.72	
23S330	33	24.4 - 40.7	0.241	0.65	
23S390	39	29.3 - 48.8	0.370	0.60	
23S470	47	34.6 - 57.7	0.460	0.54	
23S560	56	42.4 - 70.6	0.509	0.50	
23S680	68	50.9 - 84.9	0.641	0.45	
23S101	100	75.8 - 126	0.782	0.37	
23S151	150	112 - 187	1.190	0.30	
23S221	220	167 - 279	2.280	0.25	

ABSOLUTE MAXIMUM RATINGS

Operating free air temperature range	-40°C to 85°C
Storage temperature range	-40°C to 125°C

1 Specifications typical at T_A =25°C

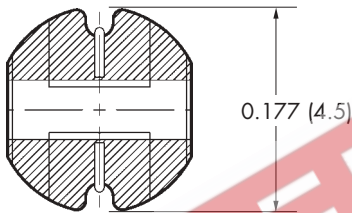
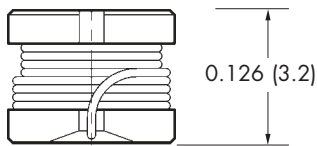
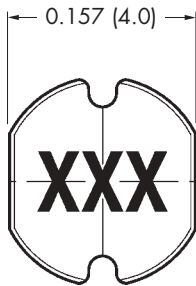
2 The maximum DC current is the value at which the inductance falls to 75% of its nominal value or until its temperature rise reaches 40°C, whichever is sooner.

3 For tape and reel packaging details refer to datasheet NDC AN002.

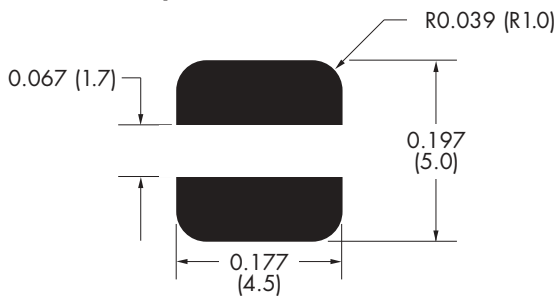
2300 SERIES

Bobbin Wound Surface Mount Inductors

1 – MECHANICAL DIMENSIONS (UNSHIELDED TYPES)

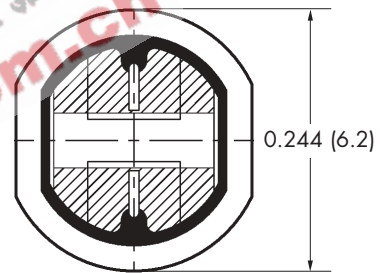
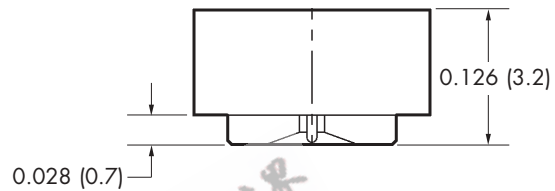
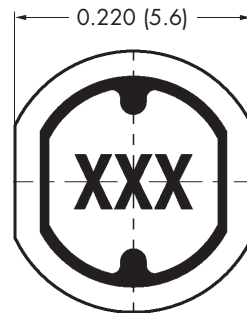


Recommended Footprint Details

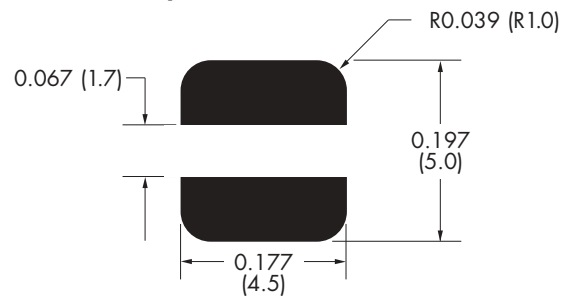


Weight: 0.20g
Unless otherwise stated all dimensions in inches (mm) ± 0.1 (0.25).
Hatching represents solder pads.

2 – MECHANICAL DIMENSIONS (EMI SHIELDED TYPES)



Recommended Footprint Details



Weight: 0.34g
Unless otherwise stated all dimensions in inches (mm) ± 0.1 (0.25).
Hatching represents solder pads.

C&D Technologies (NCL) Limited reserve the right to alter or improve the specification, internal design or manufacturing process at any time, without notice. Please check with your supplier or visit our web site to ensure that you have the current and complete specification for your product before use.

© C&D Technologies (NCL) Limited 2003

NMP 2300.3

No part of this publication may be copied, transmitted or stored in a retrieval system or reproduced in any way including, but not limited to, photography, photocopy, magnetic or other recording means, without prior written permission from C&D Technologies (NCL) Limited.

Instructions for use are available from www.cdpoweronline.com

C&D Technologies (NCL) Ltd
Tanners Drive, Blakelands North
Milton Keynes MK14 5BU, England
Tel: +44 (0)1908 615232
Fax: +44 (0)1908 617545
email: info@cdtechno-ncl.com

www.cdpoweronline.com

C&D Technologies Inc.
3400 E Britannia Drive, Tucson,
Arizona 85706, USA
Tel: +1 (800) 547-2537
Fax: +1 (520) 741-4598
email: sales@cdtechno.com

C&D TECHNOLOGIES
Power Solutions