

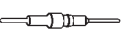


### Receptacles, solder tail

Accept pins  $\varnothing$  0.40–0.56 mm

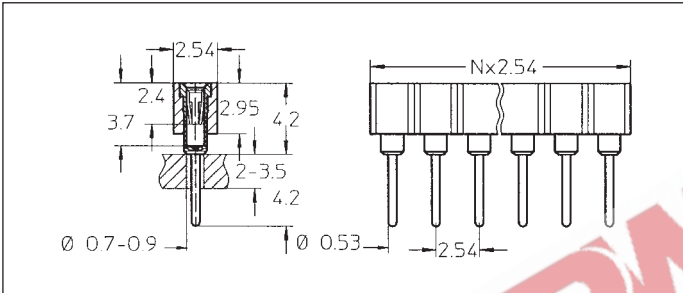


For corresponding pin connectors see pages 43 to 46

Platings	Sleeve 	Clip 	Pin 
91	5 $\mu$ m Sn Pb	0.25 $\mu$ m Au	
93	5 $\mu$ m Sn Pb	0.75 $\mu$ m Au	
97	5 $\mu$ m Sn Pb	Goldflash	
99	5 $\mu$ m Sn Pb	5 $\mu$ m Sn Pb	

### Ordering information

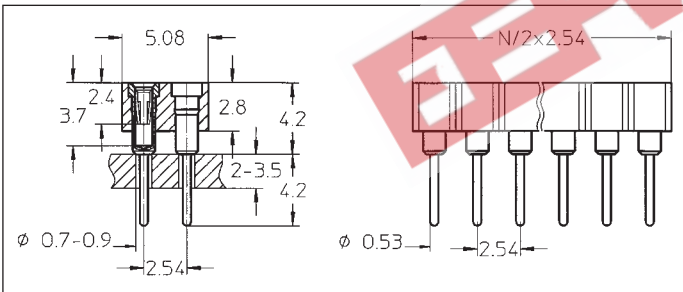
Replace **xx** with the number of poles, e.g. 411-91-2**xx**-41-001 for a double row version with 8 pins per row becomes: 411-91-2**16**-41-001



- 311-91-1xx-41-001 **B**
- 311-93-1xx-41-001 **B**
- 311-99-1xx-41-001 **B**

Straight receptacle: solder tail, long, single row

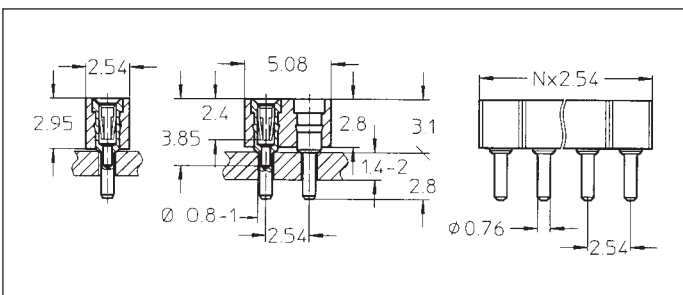
Availability from: 1 to 64 contacts  
Standard number of contacts 5, 6, 8, 10, 14, 16, 20, 21, 25, 30, 32, 48, 56, 60, 64



- 411-91-2xx-41-001 **B**
- 411-93-2xx-41-001 **B**
- 411-99-2xx-41-001 **B**

Straight receptacle: solder tail, long, double row

Availability from: 4 to 72 contacts  
Standard number of contacts 40, 44, 56, 64, 72



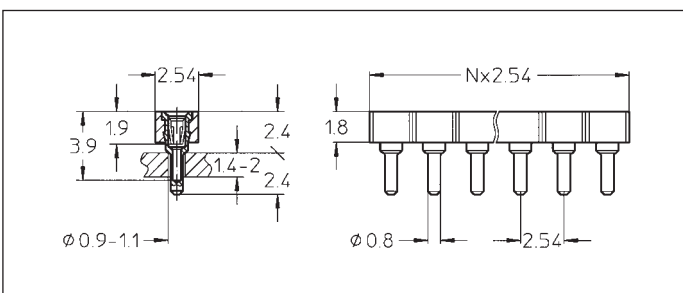
- Very low profile:
- 315-91-1xx-41-001
- 315-93-1xx-41-001
- 315-99-1xx-41-001
- 415-91-2xx-41-001
- 415-93-2xx-41-001
- 415-99-2xx-41-001

Straight receptacle: solder tail, single row, low profile

Availability from: 1 to 64 contacts  
Standard number of contacts 5, 6, 8, 10, 14, 16, 20, 21, 25, 30, 32, 48, 56, 60, 64

Straight receptacle: solder tail, double row, low profile

Availability from: 4 to 72 contacts  
Standard number of contacts 40, 44, 56, 64, 72



- Ultra low profile:
- 315-91-1xx-41-003
- 315-93-1xx-41-003
- 315-97-1xx-41-003
- 315-99-1xx-41-003

Straight receptacle: solder tail, single row, ultra low profile

Availability from: 1 to 64 contacts  
Standard number of contacts 20, 56 and 64

Ultra low version not available as double row