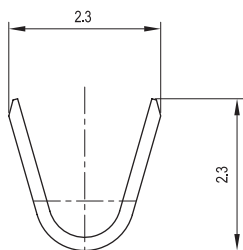
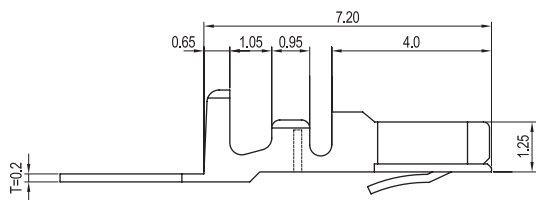
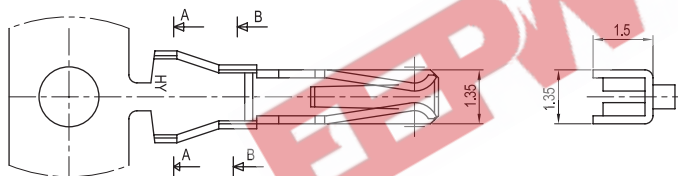
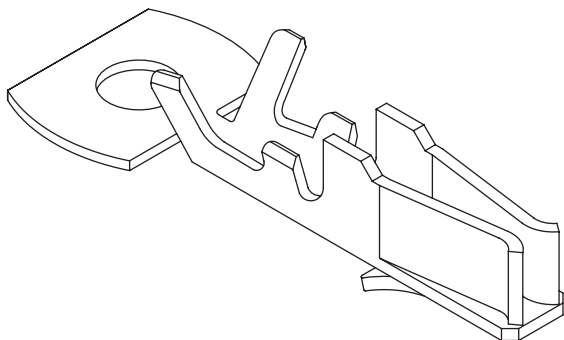


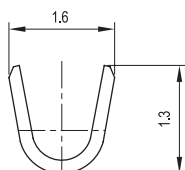
2.00mm (0.079") PITCH CONNECTOR

Wire-to-Board
Crimp Terminal

YST200-C



SECTION A-A



SECTION B-B

Material

| I/NO | DESCRIPTION | TITLE | AWG | MATERIAL | FINISH |
|------|-------------|----------|---------|-----------------|------------|
| 1 | TERMINAL | YST200-C | #22-#28 | Phosphor Bronze | Tin Plated |

Specification

| ITEM | SPEC |
|------------------------|---------------------|
| Voltage Rating | AC/DC 250V |
| Current Rating | AC/DC 3A |
| Operating Temperature | -25°C~+85°C |
| Contact Resistance | 30mΩ MAX |
| Withstanding Voltage | AC1000V/1min |
| Insulation Resistance | 1000MΩ MIN |
| Applicable Wire | AWG #22-#28 |
| Applicable P.C.B | - |
| Applicable FPC/FFC | - |
| Solder Height | - |
| Crimp Tensile Strength | AWG #22 : 2.5kgfMIN |
| | AWG #24 : 2.0kgfMIN |
| | AWG #26 : 1.5kgfMIN |
| | AWG #28 : 1.0kgfMIN |
| UL FILE NO | - |