

# Type MPF AC Motor Run Capacitors

## Oval and Round, Oil Filled, 70 °C, Metallized Polypropylene Capacitors



Type MPF AC metallized polypropylene film dielectric capacitors offer a reliable option for alternating current applications. All devices are oil filled in metal cases with 4-prong quick disconnect terminals for easy assembly. These capacitors pack high capacitance and voltage capabilities into a small, light-weight package. The MPF is internally protected for fail-safe operation. These capacitors have extremely low DF that is ideal for AC motor-run applications.

### Highlights

- Low DF
- Protected with a pressure sensitive interrupter
- Small size and light weight
- UL E71645
- CSA 219950
- Air conditioning and refrigeration applications
- Power factor correction
- Motors



Complies with the EU Directive 2002/95/EC requirement restricting the use of Lead (Pb), Mercury (Hg), Cadmium (Cd), Hexavalent chromium (Cr(VI)), PolyBrominated Biphenyls (PBB) and PolyBrominated Diphenyl Ethers (PBDE).

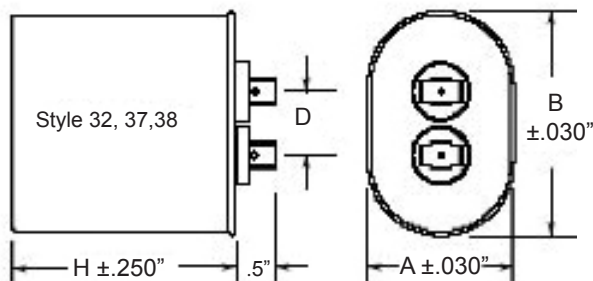
### Specifications

<b>Capacitance Range:</b>	1 to 80 $\mu$ F
<b>Voltage Ratings:</b>	330 Vac, 370 Vac, 440 Vac
<b>Capacitance Tolerance:</b>	$\pm 10\%$
<b>Operating Temperature Range:</b>	-40 °C to +70 °C
<b>Operating Frequency:</b>	50 to 60 Hz
<b>Dissipation Factor:</b>	0.1% max @ 60 Hz

### Outline Drawings

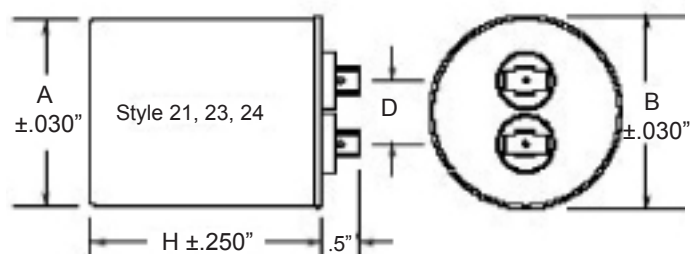
Oval				
Style	A	B	D	Industry Type
32	1 5/16"	2 5/32"	13/16"	1 1/4" Flat Oval
37	1 29/32"	2 29/32"	13/16"	1 3/4" Flat Oval
38	1 31/32"	3 21/32"	13/16"	2.0" Flat Oval

\*See Ratings Table for "H" dimension



Round				
Style	A	B	D	Industry Type
21	1 3/4"	1 7/8"	13/16"	1 3/4" Round
23	2.0"	2 1/8"	13/16"	2.0" Round
24	2 1/2"	2 5/8"	13/16"	2 1/2" Round

\*See Ratings Table for "H" dimension



# Type MPF AC Motor Run Capacitors

## Ratings

### Oval

Cap (µF)	Volts (Vac)	Base Style	Height (In.)	Catalog Part Number
<b>370 Vac</b>				
1.0	370	32	2.13	32FD3701-F
2.0	370	32	2.13	32FD3702-F
3.0	370	32	2.13	32FD3703-F
4.0	370	32	2.13	32FD3704-F
5.0	370	32	2.38	32FD3705-F
6.0	370	32	2.38	32FD3706-F
7.5	370	32	2.38	32FD37075-F
10.0	370	32	2.63	32FD3710-F
12.5	370	32	3.00	32FD37125-F
12.5	370	37	2.63	37FD37125-F
15.0	370	37	2.63	37FD3715-F
17.5	370	37	2.63	37FD37175-F
20.0	370	37	2.63	37FD3720-F
22.5	370	37	2.63	37FD37225-F
25.0	370	37	2.63	37FD3725-F
27.5	370	38	3.00	38FD37275-F
30.0	370	37	3.00	37FD3730-F
30.0	370	38	3.00	38FD3730-F
35.0	370	37	3.75	37FD3735-F
35.0	370	38	3.00	38FD3735-F
40.0	370	37	3.75	37FD3740-F
40.0	370	38	3.00	38FD3740-F
45.0	370	37	3.75	37FD3745-F
45.0	370	38	3.00	38FD3745-F
50.0	370	38	3.00	38FD3750-F
70.0	370	38	3.75	38FD3770-F
<b>440 Vac</b>				
1.0	440	32	2.13	32FB4401-F
2.0	440	32	2.13	32FB4402-F
3.0	440	32	2.38	32FB4403-F
4.0	440	32	2.38	32FB4404-F
5.0	440	32	2.63	32FB4405-F
6.0	440	32	2.63	32FB4406-F
7.5	440	32	2.63	32FB44075-F
7.5	440	37	2.63	37FB44075-F
10.0	440	32	3.75	32FB4410-F
10.0	440	37	2.63	37FB4410-F
12.5	440	37	2.63	37FB44125-F
15.0	440	37	2.63	37FB4415-F
17.5	440	37	2.63	37FB44175-F
20.0	440	37	3.00	37FB4420-F
20.0	440	38	3.00	38FB4420-F
25.0	440	37	3.75	37FB4425-F
25.0	440	38	3.75	38FB4425-F
30.0	440	38	3.75	38FB4430-F
35.0	440	37	4.75	37FB4435-F
35.0	440	38	3.75	38FB4435-F
40.0	440	37	4.75	37FB4440-F
40.0	440	38	3.75	38FB4440-F
45.0	440	38	3.75	38FB4445-F
50.0	440	38	3.75	38FB4450-F
55.0	440	38	4.75	38FB4455-F
60.0	440	38	4.75	38FB4460-F

### Round

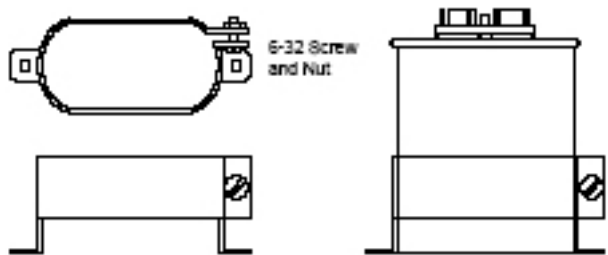
Cap (µF)	Volts (Vac)	Base Style	Height (In.)	Catalog Part Number
<b>330 Vac</b>				
3.0	330	23	2.63	23FD3303-F
4.0	330	23	2.63	23FD3304-F
5.0	330	23	2.63	23FD3305-F
6.0	330	23	2.63	23FD3306-F
7.0	330	23	2.63	23FD3307-F
8.0	330	23	2.63	23FD3308-F
10.0	330	23	2.63	23FD3310-F
<b>370 Vac</b>				
3.0	370	21	2.63	21FD3703-F
4.0	370	21	2.63	21FD3704-F
5.0	370	21	2.63	21FD3705-F
6.0	370	21	2.63	21FD3706-F
7.0	370	21	2.63	21FD3707-F
8.0	370	21	2.63	21FD3708-F
10.0	370	21	2.63	21FD3710-F
12.5	370	21	2.63	21FD37125-F
15.0	370	21	2.63	21FD3715-F
17.5	370	21	2.63	21FD37175-F
20	370	21	2.63	21FD3720-F
25	370	21	3.00	21FD3725-F
25	370	23	3.00	23FD3725-F
30	370	21	3.00	21FD3730-F
30	370	23	3.00	23FD3730-F
35	370	21	3.75	21FD3735-F
35	370	23	3.00	23FD3735-F
40	370	21	3.75	21FD3740-F
40	370	23	3.00	23FD3740-F
45	370	23	3.75	23FD3745-F
45	370	24	3.00	24FD3745-F
50	370	23	3.75	23FD3750-F
50	370	24	3.00	24FD3750-F
55	370	23	3.75	23FD3755-F
55	370	24	3.00	24FD3755-F
60	370	23	3.75	23FD3760-F
60	370	24	3.00	24FD3760-F
65	370	24	3.75	24FD3765-F
70	370	24	3.75	24FD3770-F
80	370	24	4.75	24FD3780-F
<b>440 Vac</b>				
15	440	21	2.63	21FB4415-F
20	440	21	3.00	21FB4420-F
20	440	23	3.00	23FB4420-F
22.5	440	21	3.00	21FB44225-F
22.5	440	23	3.00	23FB44225-F
25	440	21	3.75	21FB4425-F
25	440	23	3.00	23FB4425-F
30	440	23	3.75	23FB4430-F
30	440	24	3.00	24FB4430-F
35	440	23	3.75	23FB4435-F
35	440	24	3.00	24FB4435-F
40	440	23	3.75	23FB4440-F
40	440	24	3.75	24FB4440-F
45	440	24	3.75	24FB4445-F
50	440	24	3.75	24FB4450-F
55	440	24	3.75	24FB4455-F
60	440	24	4.75	24FB4460-F
70	440	24	4.75	24FB4470-F

## Hardware for Round and Oval Metals Cans

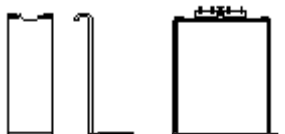
### Oval Capacitor Hardware

#### Mounting Brackets #32107

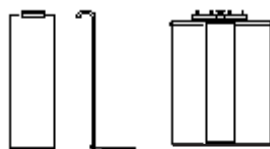
Case Code	Bracket
A	32107-1
C	32107-2
D	32107-3



#### End Mount Footed Bracket (2 required) #30434

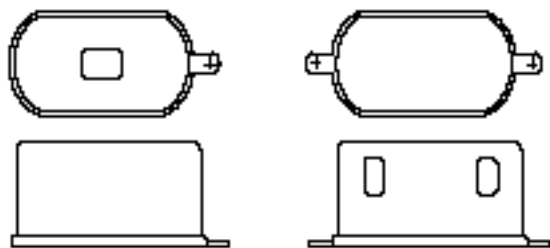


#### Side Mount Footed Bracket (2 required) #31762



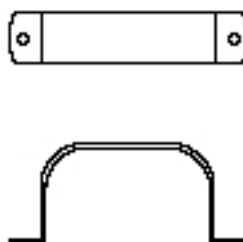
H (Inches)	End Mount	Side Mount
2.13	30434-33	31762-45
2.38	30434-37	31762-46
2.63	34434-41	31762-47
2.88	34434-45	31762-48
3.13	34434-49	31762-49
3.50	34434-55	31762-50
3.75	34434-59	31762-83
3.88	34434-61	31762-51
4.25	34434-67	31762-52
4.75	34434-75	31762-54
5.13	34434-81	31762-132
5.25	34434-83	31762-55
5.75	34434-91	31762-56
6.25	34434-99	31762-59
6.75	34434-107	31762-60
7.25	34434-115	31762-62
8.00	34434-127	31762-63
9.00	34434-143	31762-78

#### Insulating Terminal Boots UL Approved Material



#### Wrap Around Bracket

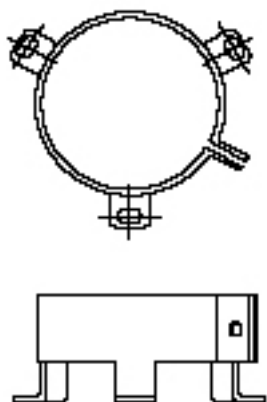
Case Code	Bracket
A	30393-5
C	30393-9
D	OB3



### Round Capacitor Hardware

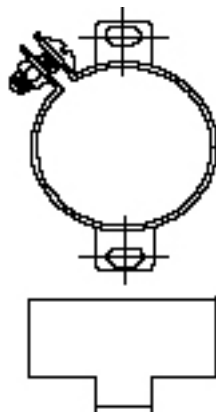
#### 3 Footed Round Mounting Bracket

Case Code	Bracket
P	VR6B
S	VR8B
T	VR10B

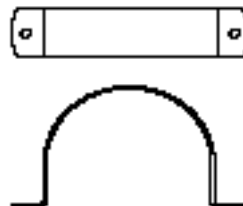


#### 2 Footed Round Mounting Bracket

Case Code	Bracket
P	32107-6
S	32107-7
T	32107-8



#### Wrap Around Bracket



Case Code	Bracket
P	RB175
S	RB200
T	RB250