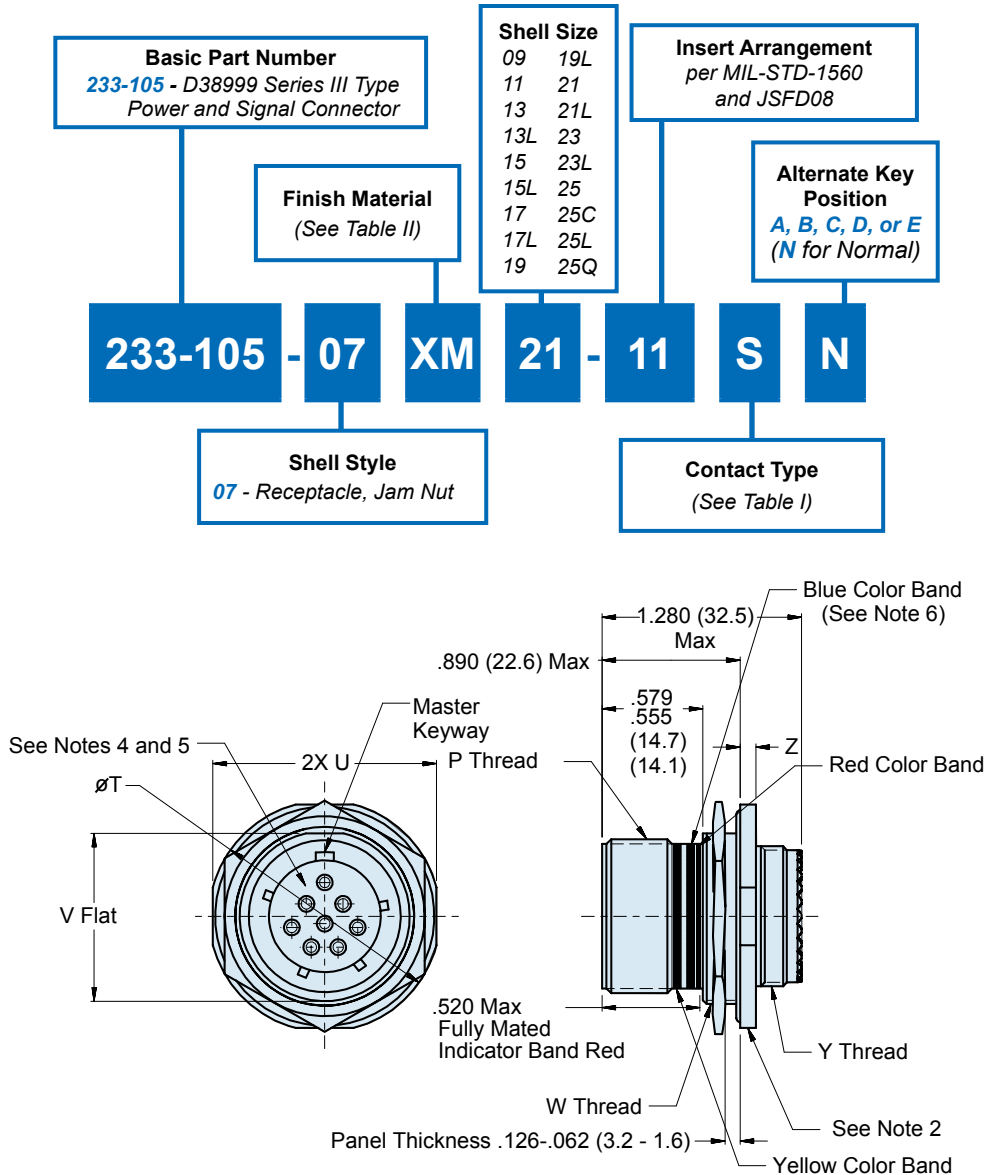




233-105-07 MIL-DTL-38999 Series III Type Jam Nut Environmental Receptacle Connector



Consult factory for available insert arrangements.

APPLICATION NOTES

1. Material/ Finishes:
Shells, Jam Nut - See Table II (Composite Jam Nut No Plating Required).
Insulators- High Grade Rigid Dielectric/ N.A
Seals- Fluorosilicone/ N.A.
2. Assembly to be identified with Glenair's name, part number and date code space permitting.
3. Modified major diameter 1.252-1.257 (31.80-31.95).
4. Insert arrangement in accordance with MIL-STD-1560.
5. Insert arrangement shown is for reference only.
6. Blue Color Band indicates rear release retention system.
7. 16# AWG contact arrangements only. See available arrangements opposite page.
8. Metric dimensions (mm) are in parentheses.

233-105-07
MIL-DTL-38999 Series III Type
Jam Nut Environmental Receptacle Connector

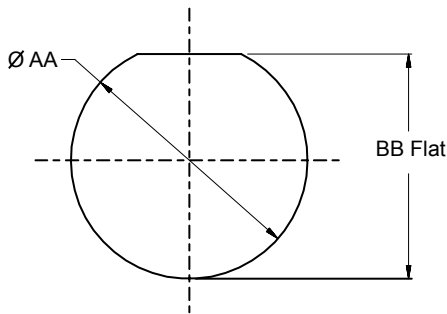


TABLE I: CONTACT TYPES

| Ordering Code | Assembly Dash Number | Wire Size | Type | Military Part Number |
|---------------|----------------------|-----------|--------|----------------------|
| P | 850-002-16-364 | #16 – #20 | Pin | M39029/58-364 |
| S | 850-001-16-352 | #16 – #20 | Socket | M39029/56-352 |
| A | Less pin contacts | | | |
| B | Less socket contacts | | | |

TABLE IV: PANEL CUTOUT

| Shell Size Code | Shell Size | AA Dia | BB Flat |
|-----------------|------------|------------------------------|------------------------------|
| A | 09 | .710 (18.0) .700 (17.8) | .670 (17.0) .660 (16.8) |
| B | 11 | .835 (21.2) .825 (21.0) | .771 (19.6) .761 (19.3) |
| C | 13 | 1.020 (25.9) 1.010 (25.7) | .955 (24.3) .945 (24.0) |
| D | 15 | 1.145 (29.1) 1.135 (28.8) | 1.085 (27.6) 1.075 (27.3) |
| E | 17 | 1.270 (32.3) 1.260 (32.0) | 1.210 (30.7) 1.200 (30.5) |
| F | 19 | 1.395 (35.4) 1.385 (35.2) | 1.335 (33.9) 1.325 (33.7) |
| G | 21 | 1.520 (38.6) 1.510 (38.4) | 1.460 (37.1) 1.450 (36.8) |
| H | 23 | 1.645 (41.8) 1.635 (41.5) | 1.585 (40.3) 1.575 (40.0) |
| J | 25 | 1.770 (45.0) 1.760 (44.7) | 1.710 (43.4) 1.700 (43.2) |



Recommended Cut-Out

TABLE II: FINISH

| SYM | MATERIAL | FINISH |
|------------|-----------|--------------------------------------|
| XM | Composite | Electroless Nickel |
| XMT | Composite | Ni-PTFE 1000 Hour Grey™ |
| XW | Composite | Cadmium O.D. Over Electroless Nickel |

*Consult Factory for Additional Plating Options

*See Note 3

TABLE III: SHELL SIZE

| Shell Size Code | Shell Size | P Thread | T Dia | U | V | W Thread | Y Thread | Z |
|-----------------|------------|----------------------|------------------------------|------------------------------|------------------------------|----------------------|---------------------|--------------------------|
| A | 09 | .6250-.1P-.3L-TS-2A | 1.200 (30.5) 1.178 (29.9) | 1.078 (27.4) 1.048 (26.6) | .654 (16.6) .645 (16.4) | M17 x 1.0-6G 0.100R | M12 x 1.0-6g 0.100R | .114 (2.9) .083 (2.1) |
| B | 11 | .7500-.1P-.3L-TS-2A | 1.386 (35.2) 1.362 (34.6) | 1.268 (32.2) 1.236 (31.4) | .755 (19.2) .745 (18.9) | M20 x 1.0-6g 0.100R | M15 x 1.0-6g 0.100R | .121 (3.1) .083 (2.1) |
| C | 13 | .8750-.1P-.3L-TS-2A | 1.512 (38.4) 1.488 (37.8) | 1.390 (35.3) 1.358 (34.5) | .942 (23.9) .932 (23.7) | M25 x 1.0-6g 0.100R | M18 x 1.0-6g 0.100R | .121 (3.1) .083 (2.1) |
| D | 15 | 1.0000-.1P-.3L-TS-2A | 1.638 (41.6) 1.614 (41.0) | 1.516 (38.5) 1.484 (37.7) | 1.066 (27.1) 1.056 (26.8) | M28 x 1.0-6g 0.100R | M22 x 1.0-6g 0.100R | .121 (3.1) .083 (2.1) |
| E | 17 | 1.1875-.1P-.3L-TS-2A | 1.764 (44.8) 1.740 (44.2) | 1.642 (41.7) 1.610 (40.9) | 1.191 (30.3) 1.181 (30.0) | M32 x 1.0-6g 0.100R* | M25 x 1.0-6g 0.100R | .121 (3.1) .083 (2.1) |
| F | 19 | 1.2500-.1P-.3L-TS-2A | 1.949 (49.5) 1.925 (48.9) | 1.827 (46.4) 1.795 (45.6) | 1.316 (33.4) 1.306 (33.2) | M35 x 1.0-6g 0.100R | M28 x 1.0-6g 0.100R | .154 (3.9) .114 (2.9) |
| G | 21 | 1.3750-.1P-.3L-TS-2A | 2.075 (52.7) 2.051 (52.1) | 1.953 (49.6) 1.921 (48.8) | 1.441 (36.6) 1.431 (36.3) | M38 x 1.0-6g 0.100R | M31 x 1.0-6g 0.100R | .154 (3.9) .114 (2.9) |
| H | 23 | 1.5000-.1P-.3L-TS-2A | 2.201 (55.9) 2.177 (55.3) | 2.079 (52.8) 2.047 (52.0) | 1.566 (39.8) 1.556 (39.5) | M41 x 1.0-6g 0.100R | M34 x 1.0-6g 0.100R | .154 (3.9) .114 (2.9) |
| J | 25 | 1.6250-.1P-.3L-TS-2A | 2.323 (59.0) 2.299 (58.4) | 2.205 (56.0) 2.173 (55.2) | 1.691 (43.0) 1.681 (42.7) | M44 x 1.0-6g 0.100R | M37 x 1.0-6g 0.100R | .154 (3.9) .114 (2.9) |