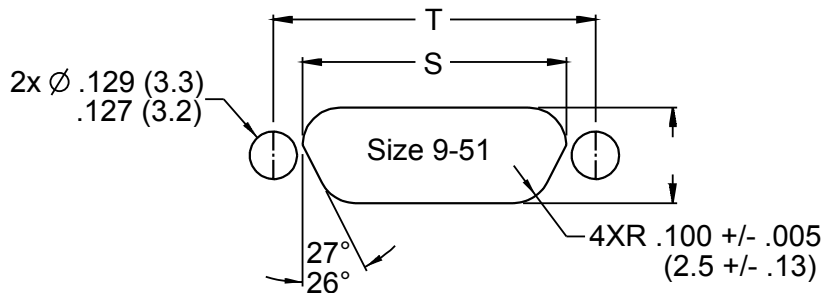


**Immersion Proof**



**247-070**  
**Immersion Proof Micro-D Filter Connector**  
**Right Angle (90°) Printed Circuit Board Mount**



| RECOMMENDED PANEL CUTOUTS |                           |                              |                           |
|---------------------------|---------------------------|------------------------------|---------------------------|
| LAYOUT                    | S +.004 (.1)<br>-.000 (0) | T +.003 (.08)<br>-.003 (.08) | W +.004 (.1)<br>-.000 (0) |
| 9                         | .408 (10.4)               | .565 (14.4)                  | .256 (6.5)                |
| 15                        | .558 (14.2)               | .715 (18.2)                  | .256 (6.5)                |
| 21                        | .708 (18.0)               | .865 (22.0)                  | .256 (6.5)                |
| 25                        | .808 (20.5)               | .965 (24.5)                  | .256 (6.5)                |
| 31                        | .958 (24.3)               | 1.115 (28.3)                 | .256 (6.5)                |
| 37                        | 1.108 (28.1)              | 1.265 (32.1)                 | .256 (6.5)                |

| TABLE I: CAPACITOR ARRAY CODE CAPACITANCE RANGE |                  |
|---|------------------|
| CLASS   | C - CIRCUIT (pF) |
| A   | 19,000 - 28,000  |
| B   | 16,000 - 22,500  |
| C   | 9,000 - 16,500   |
| D   | 4,000 - 6,000    |
| E   | 1,650 - 2,500    |
| F   | 400 - 650        |
| G   | 200 - 300        |

| DIMENSIONAL TABLE |                  |                  |                  |              |                  |                  |            |
|-------------------|------------------|------------------|------------------|--------------|------------------|------------------|------------|
| SHELL SIZE        | A +/- .005 (.13) | B +/- .005 (.13) | C +/- .003 (.08) | (D)          | E +/- .005 (.13) | F +/- .005 (.13) | (G)        |
| 9P                | 1.135 (28.8)     | .775 (19.7)      | .565 (14.4)      | .304 (7.7)   | .298 (7.6)       | .655 (16.6)      | .185 (4.7) |
| 9S                | 1.135 (28.8)     | .775 (19.7)      | .565 (14.4)      | .358 (9.1)   | .298 (7.6)       | .655 (16.6)      | .235 (6.0) |
| 15P               | 1.285 (32.6)     | .925 (23.5)      | .715 (18.2)      | .484 (12.3)  | .298 (7.6)       | .655 (16.6)      | .185 (4.7) |
| 15S               | 1.285 (32.6)     | .925 (23.5)      | .715 (18.2)      | .534 (13.6)  | .298 (7.6)       | .655 (16.6)      | .235 (6.0) |
| 21P               | 1.435 (36.4)     | 1.075 (27.3)     | .865 (22.0)      | .634 (16.1)  | .298 (7.6)       | .655 (16.6)      | .185 (4.7) |
| 21S               | 1.435 (36.4)     | 1.075 (27.3)     | .865 (22.0)      | .684 (17.4)  | .298 (7.6)       | .655 (16.6)      | .235 (6.0) |
| 25P               | 1.535 (39.0)     | 1.175 (29.8)     | .965 (24.5)      | .734 (18.6)  | .298 (7.6)       | .655 (16.6)      | .185 (4.7) |
| 25S               | 1.535 (39.0)     | 1.175 (29.8)     | .965 (24.5)      | .784 (19.9)  | .298 (7.6)       | .655 (16.6)      | .235 (6.0) |
| 31P               | 1.685 (42.8)     | 1.325 (33.7)     | 1.115 (28.3)     | .884 (22.5)  | .298 (7.6)       | .655 (16.6)      | .185 (4.7) |
| 31S               | 1.685 (42.8)     | 1.325 (33.7)     | 1.115 (28.3)     | .934 (23.7)  | .298 (7.6)       | .655 (16.6)      | .235 (6.0) |
| 37P               | 1.835 (46.6)     | 1.475 (37.5)     | 1.265 (32.1)     | 1.034 (26.3) | .298 (7.6)       | .655 (16.6)      | .185 (4.7) |
| 37S               | 1.835 (46.6)     | 1.475 (37.5)     | 1.265 (32.1)     | 1.084 (27.5) | .298 (7.6)       | .655 (16.6)      | .235 (6.0) |

**APPLICATION NOTES**

- Material/ Finish:  
 Shells - Aluminum Alloy / See P/N Development for Plating  
 Insulators - LCP / N.A.  
 Contacts - Copper Alloy / Gold Plated  
 O-Rings - Fluorosilicone
- Assembly to be identified with Glenair's name, part number, date code, and pin 1 identification.
- Performance Data per MIL-DTL-835613
- Interface Dimensions per MIL-DTL-83513
- Assembly Supplied with 2 Rear Panel Mount JackPosts for 1/16 Thick Panel
- Termination Footprint per Glenair CBR  
 (see Glenair Micro-D catalog or [www.glenair.com](http://www.glenair.com))
- Plug Assemblies Supplied with EMI Ground Spring.
- Each Assembly to be Supplied with O-Ring Installed.
- All Contacts to have Identical Filter Value. Other Filter Arrangements Available - Contact Factory.
- DWV - 100 VDC Min.
- Insulation Resistance: 5000 MegOhms Min. at 200 VDC
- Metric dimensions (mm) are indicated in parentheses.

