

# DATA SHEET

EEPW 电子產品世界  
.com.cn

## 74ABT833

Octal transceiver with parity  
generator/checker (3-State)

Product specification

1993 Jun 21

IC23 Data Handbook

# Octal transceiver with parity generator/checker (3-State)

## 74ABT833

### FEATURES

- Low static and dynamic power dissipation with high speed and high output drive
- Open-collector  $\overline{\text{ERROR}}$  output with flag register
- Output capability: +64mA/−32mA
- Latch-up protection exceeds 500mA per Jedec Std 17
- ESD protection exceeds 2000V per MIL STD 883 Method 3015 and 200 V per Machine Model
- Power up/down 3-State
- Live insertion/extraction permitted

### DESCRIPTION

The 74ABT833 high-performance BiCMOS device combines low static and dynamic power dissipation with high speed and high output drive.

The 74ABT833 is an octal transceiver with a parity generator/checker and is intended for bus-oriented applications.

When Output Enable A ( $\overline{\text{OE}}\text{A}$ ) is High, it will place the A outputs in a high impedance state. Output Enable B ( $\overline{\text{OE}}\text{B}$ ) controls the B outputs in the same way.

The parity generator creates an odd parity output (PARITY) when  $\overline{\text{OE}}\text{B}$  is Low. When  $\overline{\text{OE}}\text{A}$  is Low, the parity of the B port, including the PARITY input, is checked for odd parity. When an error is detected, the error data is sent to the input of a storage register. If a Low-to-High transition happens at the clock input (CP), the error data is stored in the register and the Open-collector error flag ( $\overline{\text{ERROR}}$ ) will go Low. The error flag register is cleared with a Low pulse on the  $\overline{\text{CLEAR}}$  input.

If both  $\overline{\text{OE}}\text{A}$  and  $\overline{\text{OE}}\text{B}$  are Low, data will flow from the A bus to the B bus and the part is forced into an error condition which creates an inverted PARITY output. This error condition can be used by the designer for system diagnostics.

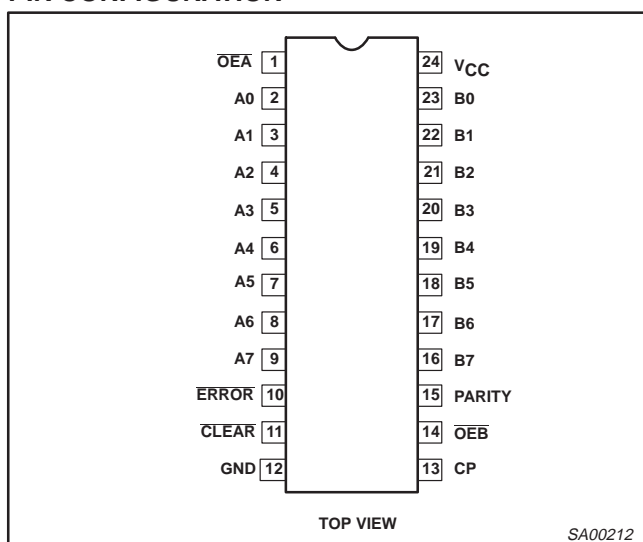
### QUICK REFERENCE DATA

SYMBOL	PARAMETER	CONDITIONS $T_{\text{amb}} = 25^{\circ}\text{C}; \text{GND} = 0\text{V}$	TYPICAL	UNIT
$t_{\text{PLH}}$ $t_{\text{PHL}}$	Propagation delay An to Bn or Bn to An	$C_{\text{L}} = 50\text{pF}; V_{\text{CC}} = 5\text{V}$	3.4	ns
$t_{\text{PLH}}$ $t_{\text{PHL}}$	Propagation delay An to PARITY	$C_{\text{L}} = 50\text{pF}; V_{\text{CC}} = 5\text{V}$	7.4	ns
$C_{\text{IN}}$	Input capacitance	$V_{\text{I}} = 0\text{V}$ or $V_{\text{CC}}$	4	pF
$C_{\text{I/O}}$	I/O capacitance	Outputs disabled; $V_{\text{O}} = 0\text{V}$ or $V_{\text{CC}}$	7	pF
$I_{\text{CCZ}}$	Total supply current	Outputs disabled; $V_{\text{CC}} = 5.5\text{V}$	50	$\mu\text{A}$

### ORDERING INFORMATION

PACKAGES	TEMPERATURE RANGE	OUTSIDE NORTH AMERICA	NORTH AMERICA	DWG NUMBER
24-Pin Plastic DIP	−40°C to +85°C	74ABT833 N	74ABT833 N	SOT222-1
24-Pin plastic SO	−40°C to +85°C	74ABT833 D	74ABT833 D	SOT137-1
24-Pin Plastic SSOP Type II	−40°C to +85°C	74ABT833 DB	74ABT833 DB	SOT340-1
24-Pin Plastic TSSOP Type I	−40°C to +85°C	74ABT833 PW	74ABT833PW DH	SOT355-1

### PIN CONFIGURATION



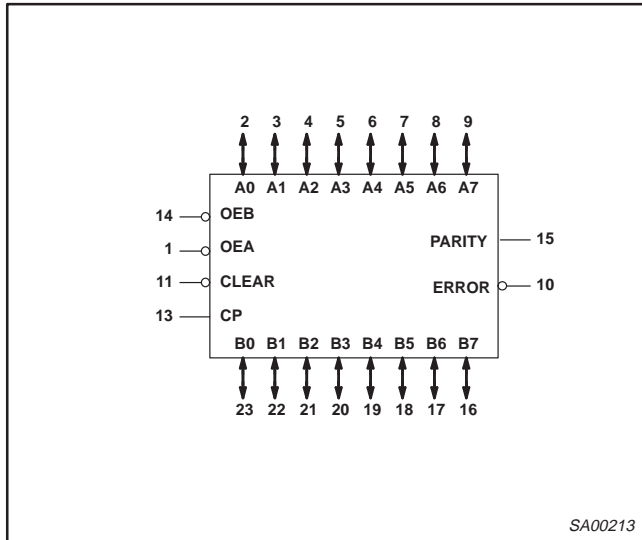
### PIN DESCRIPTION

SYMBOL	PIN NUMBER	NAME AND FUNCTION
A0 – A7	2, 3, 4, 5, 6, 7, 8, 9	A port 3-State inputs/outputs
B0 – B7	23, 22, 21, 20, 19, 18, 17, 16	B port 3-State inputs/outputs
$\overline{\text{OE}}\text{A}$	1	Enables the A outputs when Low
$\overline{\text{OE}}\text{B}$	14	Enables the B outputs when Low
PARITY	15	Parity output/input
$\overline{\text{ERROR}}$	10	Error output (open collector)
$\overline{\text{CLEAR}}$	11	Clears the error flag register when Low
CP	13	Clock input
GND	12	Ground (0V)
$V_{\text{CC}}$	24	Positive supply voltage

# Octal transceiver with parity generator/checker (3-State)

74ABT833

## LOGIC SYMBOL



## FUNCTION TABLE

MODE	INPUTS				OUTPUTS		
	OEB	OEA	A <sub>n</sub> Σ of Highs	B <sub>n</sub> + Parity Σ of Highs	A <sub>n</sub>	B <sub>n</sub>	PARITY
A data to B bus and generate odd parity output	L	H	Odd Even	(output)	(input)	A <sub>n</sub>	L H
B data to A bus and check for parity error <sup>1</sup>	H	L	(output)	X	B <sub>n</sub>	(input)	(input)
A bus and B bus disabled <sup>2</sup>	H	H	X	X	Z	Z	Z
A data to B bus and generate inverted parity output	L	L	Odd Even	(output)	(input)	A <sub>n</sub>	H L

### NOTES:

1. Error checking is detailed in the Error Flag Function Table below.
2. When clocked, the error output is Low if the sum of A inputs is even or High if the sum of A inputs is odd.

## ERROR FLAG FUNCTION TABLE

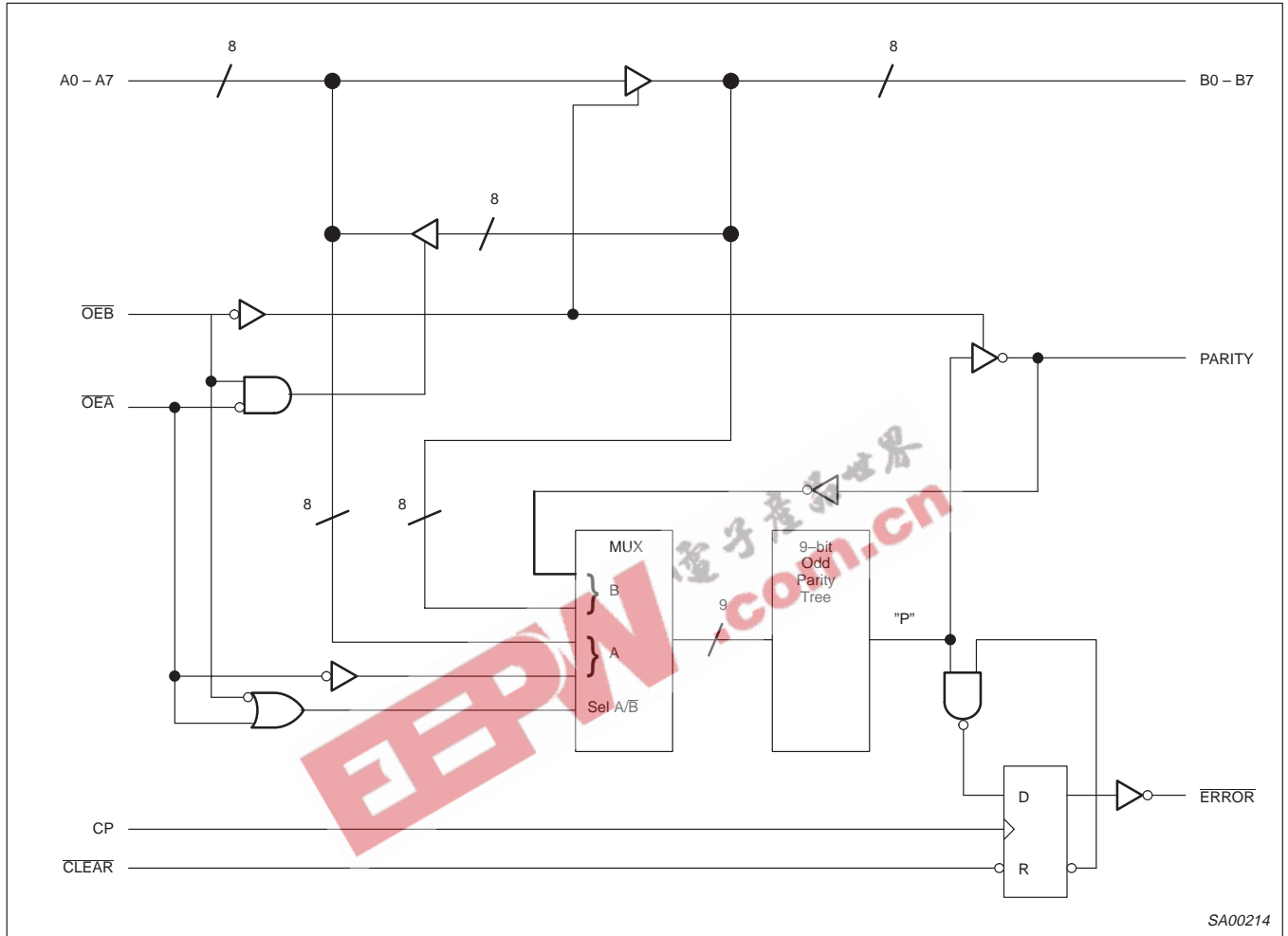
MODE	INPUTS			Internal node Point "P"	Output Pre-state ERROR <sub>n-1</sub>	ERROR OUTPUT
	CLEAR	CP	B <sub>n</sub> + Parity Σ of Highs			
Sample	H	↑	Odd	H	H	H
	H	↑	Even	L	X	L
	H	X	X	X	L	L
Hold	H	↕	X	X	X	NC
Clear	L	X	X	X	X	H

- H = High voltage level steady state
- L = Low voltage level steady state
- X = Don't care
- NC = No change
- Z = High impedance "off" state
- ↑ = Low-to-High clock transition
- ↕ = Not a Low-to-High clock transition

# Octal transceiver with parity generator/checker (3-State)

74ABT833

## LOGIC DIAGRAM



SA00214

## ABSOLUTE MAXIMUM RATINGS<sup>1, 2</sup>

SYMBOL	PARAMETER	CONDITIONS	RATING	UNIT
V <sub>CC</sub>	DC supply voltage		-0.5 to +7.0	V
I <sub>IK</sub>	DC input diode current	V <sub>I</sub> < 0	-18	mA
V <sub>I</sub>	DC input voltage <sup>3</sup>		-1.2 to +7.0	V
I <sub>OK</sub>	DC output diode current	V <sub>O</sub> < 0	-50	mA
V <sub>OUT</sub>	DC output voltage <sup>3</sup>	output in Off or High state	-0.5 to +5.5	V
I <sub>OUT</sub>	DC output current	output in Low state	128	mA
T <sub>stg</sub>	Storage temperature range		-65 to 150	°C

### NOTES:

1. Stresses beyond those listed may cause permanent damage to the device. These are stress ratings only and functional operation of the device at these or any other conditions beyond those indicated under "recommended operating conditions" is not implied. Exposure to absolute-maximum-rated conditions for extended periods may affect device reliability.
2. The performance capability of a high-performance integrated circuit in conjunction with its thermal environment can create junction temperatures which are detrimental to reliability. The maximum junction temperature of this integrated circuit should not exceed 150°C.
3. The input and output voltage ratings may be exceeded if the input and output current ratings are observed.

# Octal transceiver with parity generator/checker (3-State)

74ABT833

## RECOMMENDED OPERATING CONDITIONS

SYMBOL	PARAMETER	LIMITS		UNIT
		Min	Max	
$V_{CC}$	DC supply voltage	4.5	5.5	V
$V_I$	Input voltage	0	$V_{CC}$	V
$V_{IH}$	High-level input voltage	2.0		V
$V_{IL}$	Low-level input voltage		0.8	V
$V_{OH}$	High-level output voltage, ERROR		5.5	V
$I_{OH}$	High-level output current		-32	mA
$I_{OL}$	Low-level output current		64	mA
$\Delta t/\Delta v$	Input transition rise or fall rate	0	5	ns/V
$T_{amb}$	Operating free-air temperature range	-40	+85	°C

## DC ELECTRICAL CHARACTERISTICS

SYMBOL	PARAMETER	TEST CONDITIONS	LIMITS					UNIT
			$T_{amb} = +25^\circ\text{C}$			$T_{amb} = -40^\circ\text{C}$ to $+85^\circ\text{C}$		
			Min	Typ	Max	Min	Max	
$V_{IK}$	Input clamp voltage	$V_{CC} = 4.5\text{V}; I_{IK} = -18\text{mA}$		-0.9	-1.2		-1.2	V
$I_{OH}$	High-level output current ERROR ONLY	$V_{CC} = 5.5\text{V}; V_{OH} = 5.5\text{V}; V_I = V_{IL}$ or $V_{IH}$			20		20	$\mu\text{A}$
$V_{OH}$	High-level output voltage All outputs except ERROR	$V_{CC} = 4.5\text{V}; I_{OH} = -3\text{mA}; V_I = V_{IL}$ or $V_{IH}$	2.5	3.5		2.5		V
		$V_{CC} = 5.0\text{V}; I_{OH} = -3\text{mA}; V_I = V_{IL}$ or $V_{IH}$	3.0	4.0		3.0		V
		$V_{CC} = 4.5\text{V}; I_{OH} = -32\text{mA}; V_I = V_{IL}$ or $V_{IH}$	2.0	2.6		2.0		V
$V_{OL}$	Low-level output voltage	$V_{CC} = 4.5\text{V}; I_{OL} = 64\text{mA}; V_I = V_{IL}$ or $V_{IH}$		0.42	0.55		0.55	V
$I_I$	Input leakage current	Control pins $V_{CC} = 5.5\text{V}; V_I = \text{GND}$ or $5.5\text{V}$		$\pm 0.01$	$\pm 1.0$		$\pm 1.0$	$\mu\text{A}$
		Data pins $V_{CC} = 5.5\text{V}; V_I = \text{GND}$ or $5.5\text{V}$		$\pm 5$	$\pm 100$		$\pm 100$	$\mu\text{A}$
$I_{OFF}$	Power-off leakage current	$V_{CC} = 0.0\text{V}; V_I$ or $V_O \leq 4.5\text{V}$		$\pm 5.0$	$\pm 100$		$\pm 100$	V
$I_{PULPD}$	Power-up/down 3-State output current <sup>3</sup>	$V_{CC} = 2.0\text{V}$ ; or $V_O = 0.5\text{V}; V_I = \text{GND}$ or $V_{CC}$ ; $V_{OE} = \text{Don't care}$		$\pm 5.0$	$\pm 50$		$\pm 50$	V
$I_{IH} + I_{OZH}$	3-State output High current	$V_{CC} = 5.5\text{V}; V_O = 2.7\text{V}; V_I = V_{IL}$ or $V_{IH}$		5.0	50		50	$\mu\text{A}$
$I_{IL} + I_{OZL}$	3-State output Low current	$V_{CC} = 5.5\text{V}; V_O = 0.5\text{V}; V_I = V_{IL}$ or $V_{IH}$		-5.0	-50		-50	$\mu\text{A}$
$I_{CEX}$	Output High leakage current	$V_{CC} = 5.5\text{V}; V_O = 5.5\text{V}; V_I = \text{GND}$ or $V_{CC}$		5.0	50		50	$\mu\text{A}$
$I_O$	Output current <sup>1</sup>	$V_{CC} = 5.5\text{V}; V_O = 2.5\text{V}$	-50	-80	-180	-50	-180	mA
$I_{CCH}$	Quiescent supply current	$V_{CC} = 5.5\text{V}$ ; Outputs High, $V_I = \text{GND}$ or $V_{CC}$		50	250		250	$\mu\text{A}$
$I_{CCL}$		$V_{CC} = 5.5\text{V}$ ; Outputs Low, $V_I = \text{GND}$ or $V_{CC}$		20	30		30	mA
$I_{CCZ}$		$V_{CC} = 5.5\text{V}$ ; Outputs 3-State; $V_I = \text{GND}$ or $V_{CC}$		50	250		250	$\mu\text{A}$
$\Delta I_{CC}$	Additional supply current per input pin <sup>2</sup>	$V_{CC} = 5.5\text{V}$ ; one input at 3.4V, other inputs at $V_{CC}$ or GND		0.3	1.5		1.5	mA

### NOTES:

- Not more than one output should be tested at a time, and the duration of the test should not exceed one second.
- This is the increase in supply current for each input at 3.4V.
- This parameter is valid for any  $V_{CC}$  between 0V and 2.1, with a transition time of up to 10msec. From  $V_{CC} = 2.1\text{V}$  to  $V_{CC} = 5\text{V} \pm 10\%$ , a transition of up to 100 $\mu\text{sec}$  is permitted. The ERROR output pin 10 is not included in this spec due to the open collector design.

# Octal transceiver with parity generator/checker (3-State)

74ABT833

## AC CHARACTERISTICS

GND = 0V;  $t_R = t_F = 2.5\text{ns}$ ;  $C_L = 50\text{pF}$ ,  $R_L = 500\Omega$ 

SYMBOL	PARAMETER	WAVEFORMS	LIMITS					UNIT
			$T_{\text{amb}} = +25^\circ\text{C}$ $V_{\text{CC}} = +5.0\text{V}$			$T_{\text{amb}} = -40 \text{ to } +85^\circ\text{C}$ $V_{\text{CC}} = +5.0\text{V} \pm 10\%$		
			Min	Typ	Max	Min	Max	
$t_{\text{PLH}}$ $t_{\text{PHL}}$	Propagation delay An to Bn or Bn to An	2	1.2 1.0	3.4 2.6	4.8 4.0	1.2 1.0	5.3 4.5	ns
$t_{\text{PLH}}$ $t_{\text{PHL}}$	Propagation delay An to PARITY	1 2	2.1 2.5	7.4 7.4	9.5 9.7	2.1 2.5	11.2 11.0	ns
$t_{\text{PLH}}$ $t_{\text{PHL}}$	Propagation delay OEA to PARITY	1 2	2.6 3.1	6.6 6.7	8.5 8.6	2.6 3.1	10.5 10.0	ns
$t_{\text{PLH}}$	Propagation delay CLEAR to ERROR	5	1.0	2.9	4.4	1.0	5.2	ns
$t_{\text{PHL}}$	Propagation delay CP to ERROR	1	2.5	4.2	5.7	2.5	6.2	ns
$t_{\text{PZH}}$ $t_{\text{PZL}}$	Output enable time OEA to An or OEB to Bn, PARITY	3 4	1.0 2.1	3.2 4.1	5.1 5.8	1.0 2.1	6.2 6.7	ns
$t_{\text{PHZ}}$ $t_{\text{PLZ}}$	Output disable time OEA to An or OEB to Bn, PARITY	3 4	3.1 3.2	5.1 5.6	7.3 7.7	3.1 3.2	7.9 8.1	ns

## AC SETUP REQUIREMENTS

GND = 0V;  $t_R = t_F = 2.5\text{ns}$ ;  $C_L = 50\text{pF}$ ,  $R_L = 500\Omega$ 

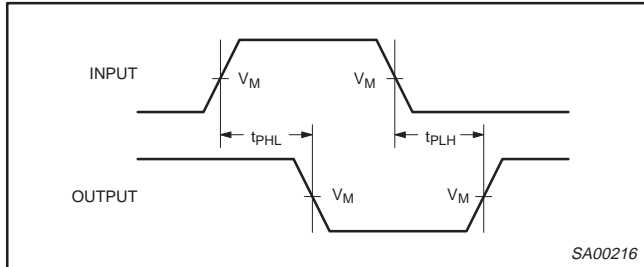
SYMBOL	PARAMETER	WAVEFORMS	LIMITS			UNIT
			$T_{\text{amb}} = +25^\circ\text{C}$ $V_{\text{CC}} = +5.0\text{V}$		$T_{\text{amb}} = -40 \text{ to } +85^\circ\text{C}$ $V_{\text{CC}} = +5.0\text{V} \pm 10\%$	
			Min	Typ	Min	
$t_s(\text{H})$ $t_s(\text{L})$	Setup time, High or Low Bn or PARITY to CP	6	9.8 8.1	6.9 4.0	9.8 8.1	ns
$t_h(\text{H})$ $t_h(\text{L})$	Hold time, High or Low Bn or PARITY to CP	6	0.0 0.0	-3.7 -6.7	0.0 0.0	ns
$t_w(\text{H})$ $t_w(\text{L})$	Pulse width, High or Low CP	6	3.0 3.0	1.5 1.0	3.0 3.0	ns
$t_w(\text{L})$	Pulse width, Low CLEAR	5	3.0	1.0	3.0	ns
$t_{\text{rec}}$	Recovery time CLEAR to CP	5	2.0	-0.3	2.0	ns

# Octal transceiver with parity generator/checker (3-State)

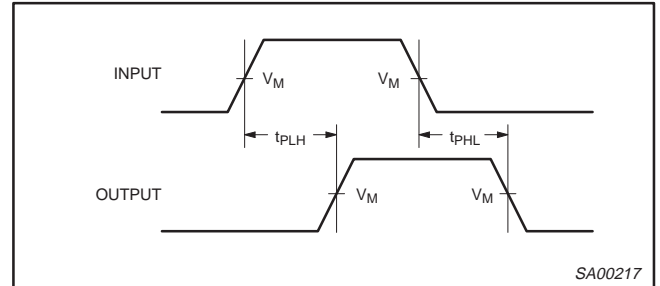
74ABT833

## AC WAVEFORMS

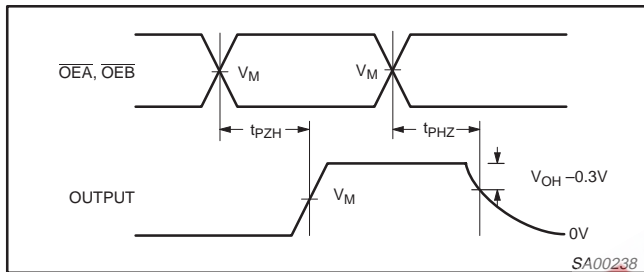
$V_M = 1.5V$ ,  $V_{IN} = GND$  to  $3.0V$



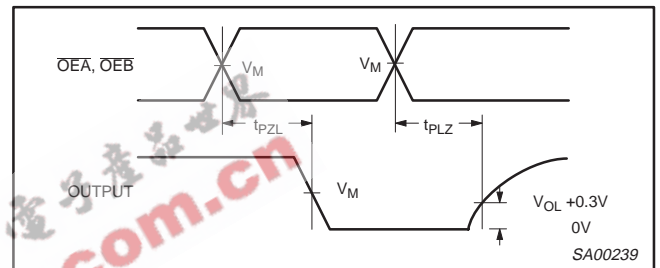
Waveform 1. Propagation Delay For Inverting Output



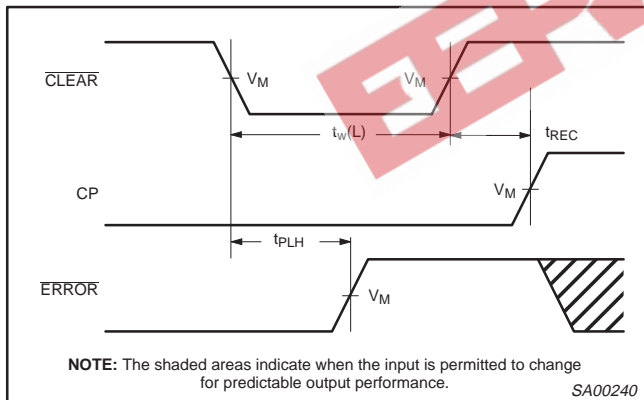
Waveform 2. Propagation Delay For Non-Inverting Output



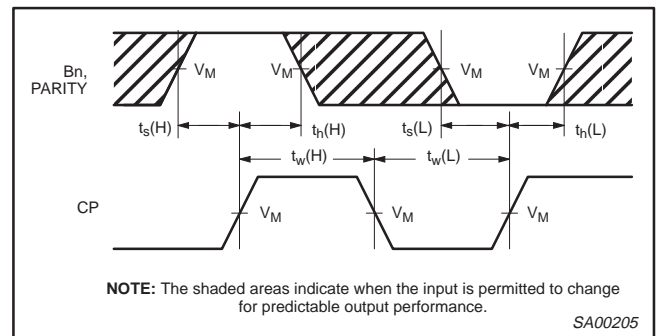
Waveform 3. 3-State Output Enable Time to High Level and Output Disable Time from High Level



Waveform 4. 3-State Output Enable Time to Low Level and Output Disable Time from Low Level



Waveform 5. CLEAR Pulse Width, CLEAR to ERROR Delay and CLEAR to Clock Recovery Time

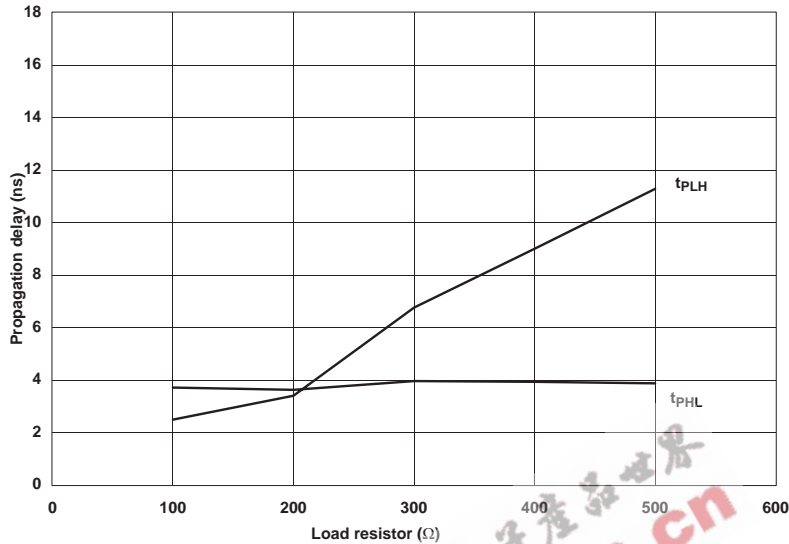


Waveform 6. Data Setup and Hold Times and Clock Pulse Width

# Octal transceiver with parity generator/checker (3-State)

74ABT833

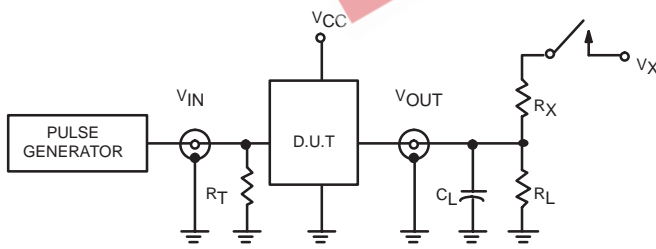
## TYPICAL PROPAGATION DELAYS VERSUS LOAD FOR OPEN COLLECTOR OUTPUTS



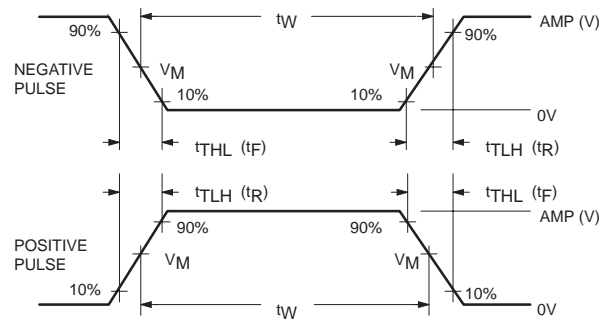
**NOTE:** When using Open-Collector parts, the value of the pull-up resistor greatly affects the value of the t<sub>PLH</sub>. For example, changing the specified pull-up resistor value from 500Ω to 100Ω will improve the t<sub>PLH</sub> over 300% with only a slight change in the t<sub>PHL</sub>. However, if the value of the pull-up resistor is changed, the user must make certain that the total I<sub>OL</sub> current through the resistor and the total I<sub>L</sub>'s of the receivers does not exceed the I<sub>OL</sub> maximum specification.

SA00241

## TEST CIRCUIT AND WAVEFORM



Test Circuit for 3-State Outputs



V<sub>M</sub> = 1.5V  
Input Pulse Definition

### SWITCH POSITION

TEST	SWITCH
t <sub>PLZ</sub>	closed
t <sub>PZL</sub>	closed
All other	open

### LOAD VALUES

OUTPUT	R <sub>X</sub>	V <sub>X</sub>
ERROR	100Ω	V <sub>CC</sub>
All other	500Ω	7.0V

### DEFINITIONS

R<sub>L</sub> = Load resistor; see AC CHARACTERISTICS for value.

C<sub>L</sub> = Load capacitance includes jig and probe capacitance; see AC CHARACTERISTICS for value.

R<sub>T</sub> = Termination resistance should be equal to Z<sub>OUT</sub> of pulse generators.

FAMILY	INPUT PULSE REQUIREMENTS				
	Amplitude	Rep. Rate	t <sub>w</sub>	t <sub>R</sub>	t <sub>F</sub>
74ABT	3.0V	1MHz	500ns	2.5ns	2.5ns

SA00242



---

**Octal transceiver with parity generator/checker  
(3-State)**

---

**74ABT833**

<b>DIP24:</b> plastic dual in-line package; 24 leads (300 mil)	<b>SOT222-1</b>
<b>SO24:</b> plastic small outline package; 24 leads; body width 7.5 mm	<b>SOT137-1</b>
<b>SSOP24:</b> plastic shrink small outline package; 24 leads; body width 5.3 mm	<b>SOT340-1</b>
<b>TSSOP24:</b> plastic thin shrink small outline package; 24 leads; body width 4.4 mm	<b>SOT355-1</b>

**EEPW** 电子產品世界  
.com.cn

---

Octal transceiver with parity generator/checker  
(3-State)

---

74ABT833

NOTES



# Octal transceiver with parity generator/checker (3-State)

74ABT833

## DEFINITIONS

Data Sheet Identification	Product Status	Definition
<i>Objective Specification</i>	<b>Formative or in Design</b>	This data sheet contains the design target or goal specifications for product development. Specifications may change in any manner without notice.
<i>Preliminary Specification</i>	<b>Preproduction Product</b>	This data sheet contains preliminary data, and supplementary data will be published at a later date. Philips Semiconductors reserves the right to make changes at any time without notice in order to improve design and supply the best possible product.
<i>Product Specification</i>	<b>Full Production</b>	This data sheet contains Final Specifications. Philips Semiconductors reserves the right to make changes at any time without notice, in order to improve design and supply the best possible product.

Philips Semiconductors and Philips Electronics North America Corporation reserve the right to make changes, without notice, in the products, including circuits, standard cells, and/or software, described or contained herein in order to improve design and/or performance. Philips Semiconductors assumes no responsibility or liability for the use of any of these products, conveys no license or title under any patent, copyright, or mask work right to these products, and makes no representations or warranties that these products are free from patent, copyright, or mask work right infringement, unless otherwise specified. Applications that are described herein for any of these products are for illustrative purposes only. Philips Semiconductors makes no representation or warranty that such applications will be suitable for the specified use without further testing or modification.

### LIFE SUPPORT APPLICATIONS

Philips Semiconductors and Philips Electronics North America Corporation Products are not designed for use in life support appliances, devices, or systems where malfunction of a Philips Semiconductors and Philips Electronics North America Corporation Product can reasonably be expected to result in a personal injury. Philips Semiconductors and Philips Electronics North America Corporation customers using or selling Philips Semiconductors and Philips Electronics North America Corporation Products for use in such applications do so at their own risk and agree to fully indemnify Philips Semiconductors and Philips Electronics North America Corporation for any damages resulting from such improper use or sale.

**Philips Semiconductors**  
**811 East Arques Avenue**  
**P.O. Box 3409**  
**Sunnyvale, California 94088-3409**  
**Telephone 800-234-7381**

Philips Semiconductors and Philips Electronics North America Corporation register eligible circuits under the Semiconductor Chip Protection Act.  
 © Copyright Philips Electronics North America Corporation 1995  
 All rights reserved. Printed in U.S.A.