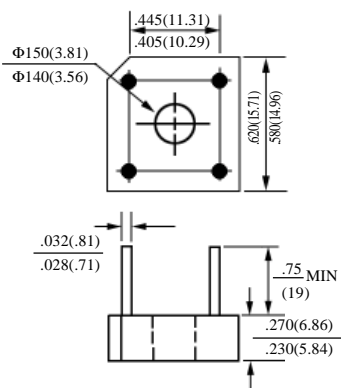


**BR305 – BR310
KBPC1005 – KBPC110**
3.0A 桥式整流器
3.0A BRIDGE RECTIFIERS

最大额定值、电性 MAXIMUM RATINGS AND ELECTRICAL CHARACTERISTICS
 Ratings at 25°C ambient temperature unless otherwise specified. Single phase, half wave,
 60Hz, resistive or inductive load. For capacitive load, derate current by 20%.

| 型号 TYPE | | 最大反向 峰值电压 Maximum Peak Reverse Voltage | 最大平均 正向电流 Maximum Average Forward Output Current @T _A =40°C | 最大正向 浪涌电流 Maximum Forward Peak Surge Current @ 8.3ms Superimposed | 最大正向 峰值电压 Maximum DC Forward Voltage drop per element at I _F =3.0ADC | 最大反向 电 流 Maximum DC Reverse Current at rated DC Blocking Voltage per element | | 结 温 Operating Junction Temperature | 外型尺寸 Package Dimensions |
|------------|----------|---|---|---|--|--|------------------------------|---|-------------------------------|
| | | PRV | I _O | I _{FM} (Surge) | V _F | I _R | | T _J | |
| | | V _{PK} | A _{AV} | A _{PK} | V _{PK} | 25°C T _A μADC | 125°C T _A μADC | °C | |
| BR305 | KBPC1005 | 50 | 3.0 | 50 | 1.1 | 10 | 500 | 125 | BR - 3 |
| BR31 | KBPC101 | 100 | | | | | | | |
| BR32 | KBPC102 | 200 | | | | | | | |
| BR34 | KBPC104 | 400 | | | | | | | |
| BR36 | KBPC106 | 600 | | | | | | | |
| BR38 | KBPC108 | 800 | | | | | | | |
| BR310 | KBPC110 | 1000 | | | | | | | |


BR - 3

BR305-BR310 KBPC1005-KBPC110

桥式整流器额定值与特性曲线

BRIDGE RECTIFIERS RATING & CHARACTERISTIC CURVES

FIG. 1 - TYPICAL FORWARD CURRENT DERATING CURVE

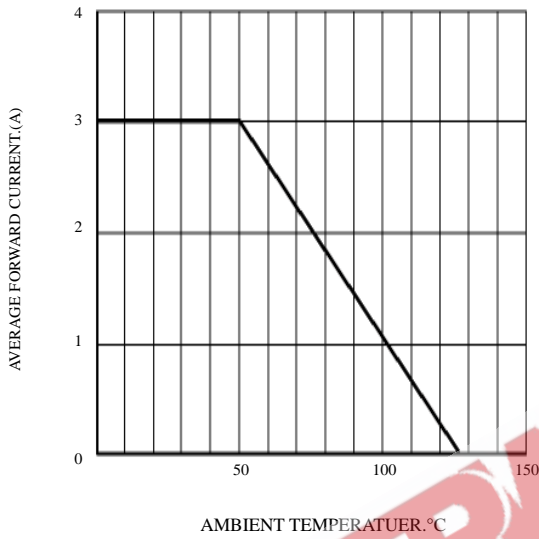


FIG. 2 - PEAK FORWARD CURRENT

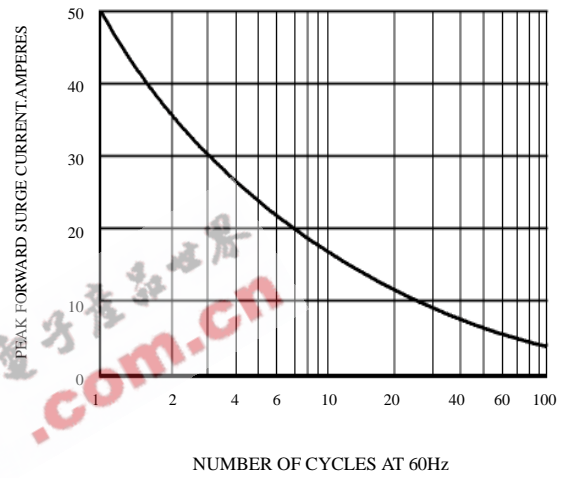


FIG. 3 - TYPICAL REVERSE CHARACTERISTICS

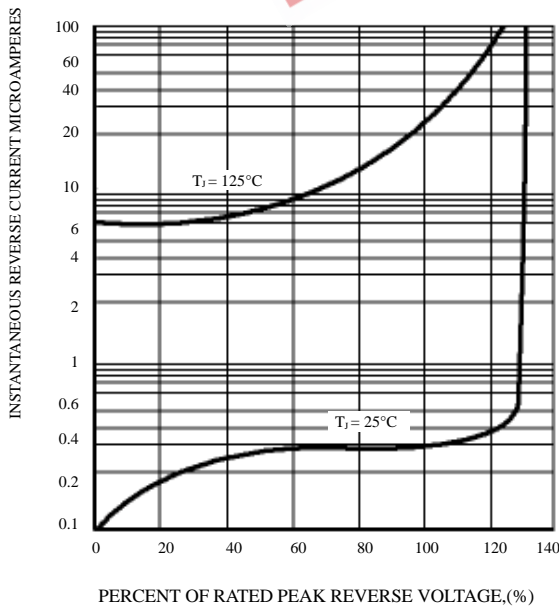


FIG. 4 - TYPICAL FORWARD CHARACTERISTICS

