

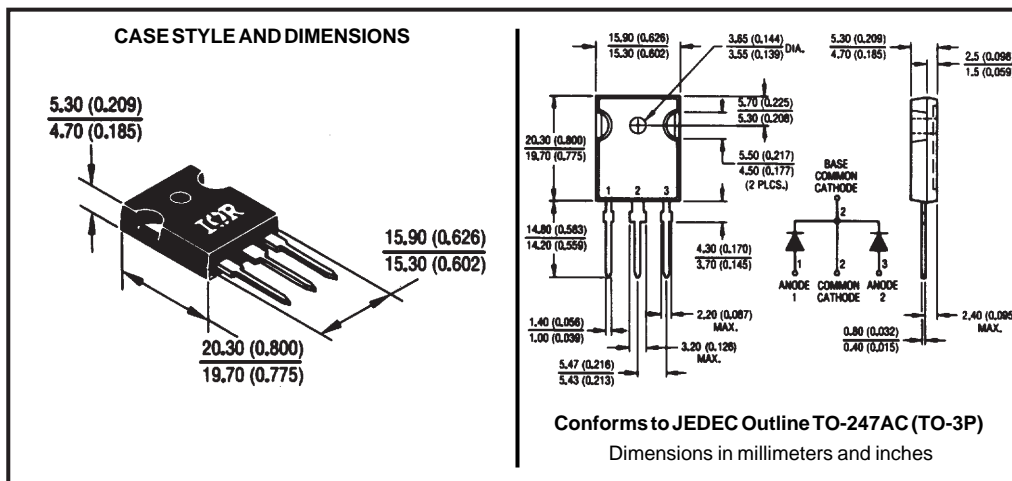
Major Ratings and Characteristics

| Characteristics | 30CPQ... | Units |
|---|------------|------------------|
| $I_{F(AV)}$ Rectangular waveform | 30 | A |
| V_{RRM} | 35/40/45 | V |
| I_{FSM} @ tp = 5 μ s sine | 1020 | A |
| V_F @ 15 Apk, $T_J=125^\circ\text{C}$ (per leg) | 0.50 | V |
| T_J | -55 to 150 | $^\circ\text{C}$ |

Description/Features

The 30CPQ... center tap Schottky rectifier has been optimized for very low forward voltage drop, with moderate leakage. The proprietary barrier technology allows for reliable operation up to 150° C junction temperature. Typical applications are in switching power supplies, converters, free-wheeling diodes, and reverse battery protection.

- 150° C T_J operation
- Center tap TO-247 package
- High purity, high temperature epoxy encapsulation for enhanced mechanical strength and moisture resistance
- Very low forward voltage drop
- High frequency operation
- Guard ring for enhanced ruggedness and long term reliability



Voltage Ratings

| Part number | 30CPQ035 | 30CPQ040 | 30CPQ045 |
|---|----------|----------|----------|
| V_R Max. DC Reverse Voltage (V) | 35 | 40 | 45 |
| V_{RWM} Max. Working Peak Reverse Voltage (V) | | | |

Absolute Maximum Ratings

| Parameters | 30CPQ... | Units | Conditions |
|---|----------|-------|--|
| $I_{F(AV)}$ Max. Average Forward Current * See Fig. 5 | 30 | A | 50% duty cycle @ $T_C = 124^\circ\text{C}$, rectangular waveform |
| I_{FSM} Max. Peak One Cycle Non-Repetitive Surge Current (Per Leg) * See Fig. 7 | 1020 | A | Following any rated load condition and with rated V_{RWM} applied |
| | 265 | | |
| E_{AS} Non-Repetitive Avalanche Energy (Per Leg) | 20 | mJ | $T_J = 25^\circ\text{C}$, $I_{AS} = 3$ Amps, $L = 4.4$ mH |
| I_{AR} Repetitive Avalanche Current (Per Leg) | 3 | A | Current decaying linearly to zero in 1 μsec Frequency limited by T_J max. $V_A = 1.5 \times V_R$ typical |

Electrical Specifications

| Parameters | 30CPQ... | Units | Conditions |
|--|----------|------------------|---|
| V_{FM} Max. Forward Voltage Drop (Per Leg) * See Fig. 1 (1) | 0.54 | V | @ 15A |
| | 0.68 | V | @ 30A |
| | 0.50 | V | @ 15A |
| | 0.64 | V | @ 30A |
| I_{RM} Max. Reverse Leakage Current (Per Leg) * See Fig. 2 (1) | 1.75 | mA | $T_J = 25^\circ\text{C}$ |
| | 70 | mA | $T_J = 125^\circ\text{C}$ |
| C_T Max. Junction Capacitance (Per Leg) | 900 | pF | $V_R = 5V_{DC}$, (test signal range 100Khz to 1Mhz) 25°C |
| L_S Typical Series Inductance (Per Leg) | 7.5 | nH | Measured lead to lead 5mm from package body |
| dv/dt Max. Voltage Rate of Change (Rated V_R) | 10,000 | V/ μs | |

(1) Pulse Width < 300 μs , Duty Cycle <2%

Thermal-Mechanical Specifications

| Parameters | 30CPQ... | Units | Conditions |
|---|-----------------|---------------------------|--------------------------------------|
| T_J Max. Junction Temperature Range | -55 to 150 | $^\circ\text{C}$ | |
| T_{stg} Max. Storage Temperature Range | -55 to 150 | $^\circ\text{C}$ | |
| R_{thJC} Max. Thermal Resistance Junction to Case (Per Leg) | 2.20 | $^\circ\text{C}/\text{W}$ | DC operation * See Fig. 4 |
| R_{thJC} Max. Thermal Resistance Junction to Case (Per Package) | 1.10 | $^\circ\text{C}/\text{W}$ | DC operation |
| R_{thCS} Typical Thermal Resistance, Case to Heatsink | 0.24 | $^\circ\text{C}/\text{W}$ | Mounting surface, smooth and greased |
| wt Approximate Weight | 6(0.21) | g(oz.) | |
| T Mounting Torque | Min. 6(5) | Kg-cm (lbf-in) | Non-lubricated threads |
| | Max. 12(10) | | |
| Case Style | TO-247AC(TO-3P) | JEDEC | |

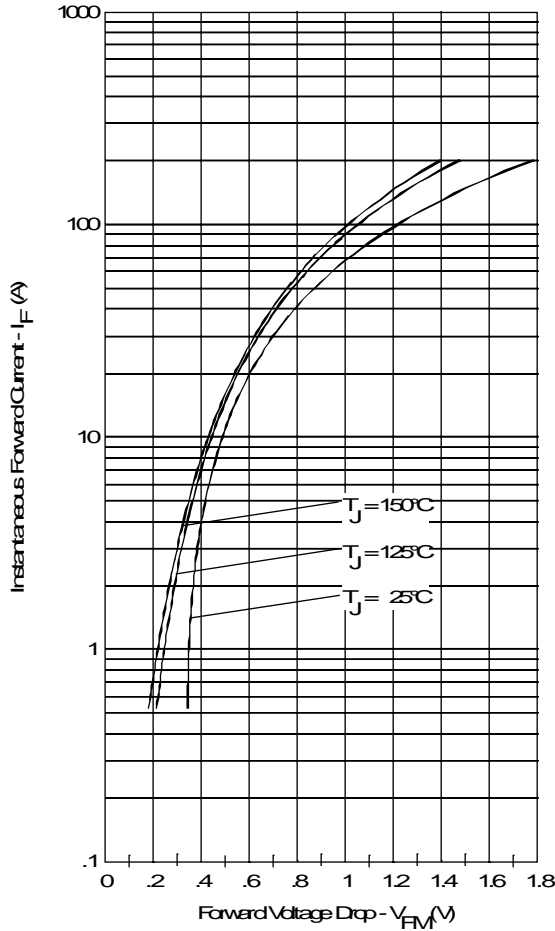


Fig. 1 - Max. Forward Voltage Drop Characteristics (Per Leg)

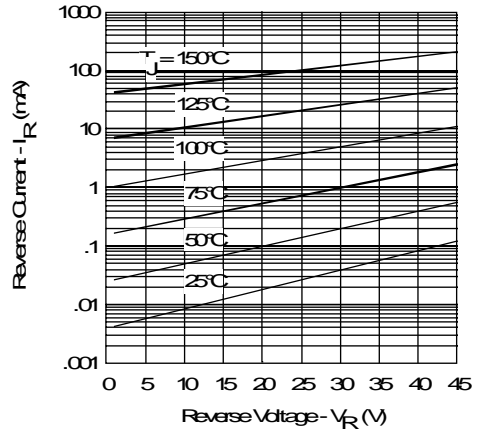


Fig. 2 - Typical Values Of Reverse Current Vs. Reverse Voltage (Per Leg)

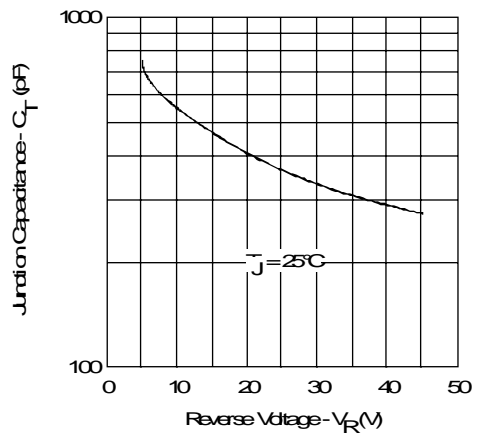


Fig. 3 - Typical Junction Capacitance Vs. Reverse Voltage (Per Leg)

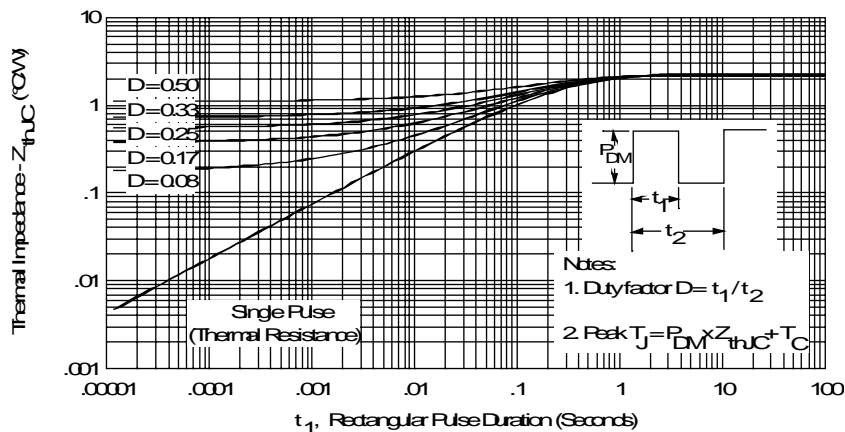


Fig. 4 - Max. Thermal Impedance Z_{thJC} Characteristics (Per Leg)

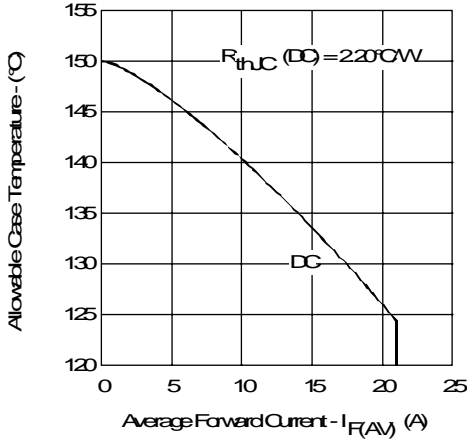


Fig. 5- Max. Allowable Case Temperature Vs. Average Forward Current (Per Leg)

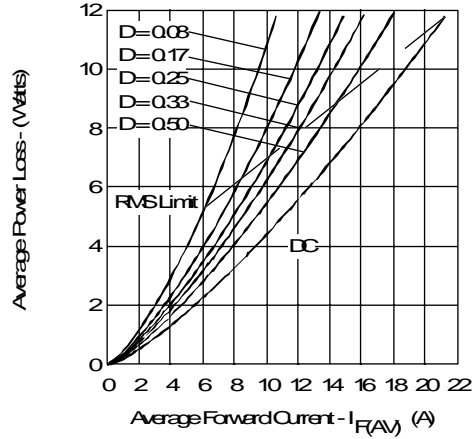


Fig. 6- Forward Power Loss Characteristics (Per Leg)

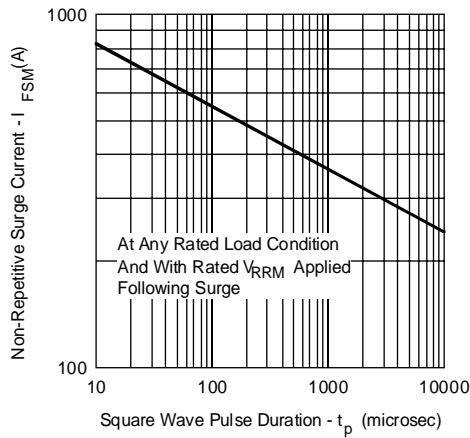


Fig. 7- Max. Non-Repetitive Surge Current (Per Leg)

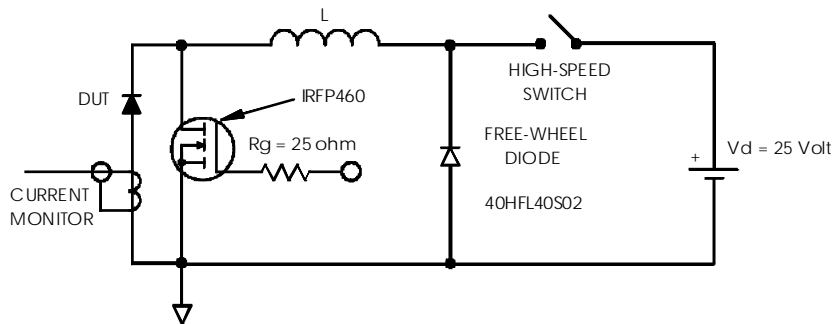


Fig. 8- Unclamped Inductive Test Circuit