

1-70-01-07

54/74170 54LS/74LS170

4 X 4 REGISTER FILE
(With Open-Collector Outputs)

DESCRIPTION — The '170 contains 16 high speed, low power, transparent D-type latches arranged as four words of four bits each, to function as a 4 X 4 register file. Separate read and write inputs, both address and enable, allow simultaneous read and write operation. Open-collector outputs make it possible to connect up to 128 outputs in a wired-AND configuration to increase the word capacity up to 512 words. Any number of these devices can be operated in parallel to generate an n-bit length. The '670 provides a similar function to this device but it features 3-state outputs.

- SIMULTANEOUS READ/WRITE OPERATION
- EXPANDABLE TO 512 WORDS OF n-BITS
- TYPICAL ACCESS TIME OF 20 ns
- LOW LEAKAGE OPEN-COLLECTOR OUTPUTS FOR EXPANSION

ORDERING CODE: See Section 9

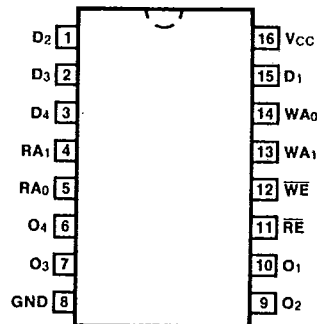
| PKGS | PIN OUT | COMMERCIAL GRADE | MILITARY GRADE | PKG TYPE |
|-----------------|---------|--|--|----------|
| | | V _{CC} = +5.0 V ±5%, T _A = 0°C to +70°C | V _{CC} = +5.0 V ±10%, T _A = -55°C to +125°C | |
| Plastic DIP (P) | A | 74170PC, 74LS170PC | | 9B |
| Ceramic DIP (D) | A | 74170DC, 74LS170DC | 54170DM, 54LS170DM | 7B |
| Flatpak (F) | A | 74170FC, 74LS170FC | 54170FM, 54LS170DM | 4L |

INPUT LOADING/FAN-OUT: See Section 3 for U.L. definitions

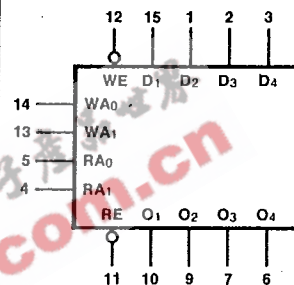
| PIN NAMES | DESCRIPTION | 54/74 (U.L.) HIGH/LOW | 54/74LS (U.L.) HIGH/LOW |
|-----------------------------------|---------------------------------|-----------------------|-------------------------|
| D ₁ — D ₄ | Data Inputs | 1.0/1.0 | 0.5/0.25 |
| WA ₀ , WA ₁ | Write Address Inputs | 1.0/1.0 | 0.5/0.25 |
| WE | Write Enable Input (Active LOW) | 1.0/1.0 | 1.0/0.5 |
| RA ₀ , RA ₁ | Read Address Inputs | 1.0/1.0 | 0.5/0.25 |
| RE | Read Enable Input (Active LOW) | 1.0/1.0 | 1.0/0.5 |
| O ₁ — O ₄ | Data Outputs | OC*/10 | OC*/5.0 (2.5) |

*OC—Open Collector

CONNECTION DIAGRAM PINOUT A

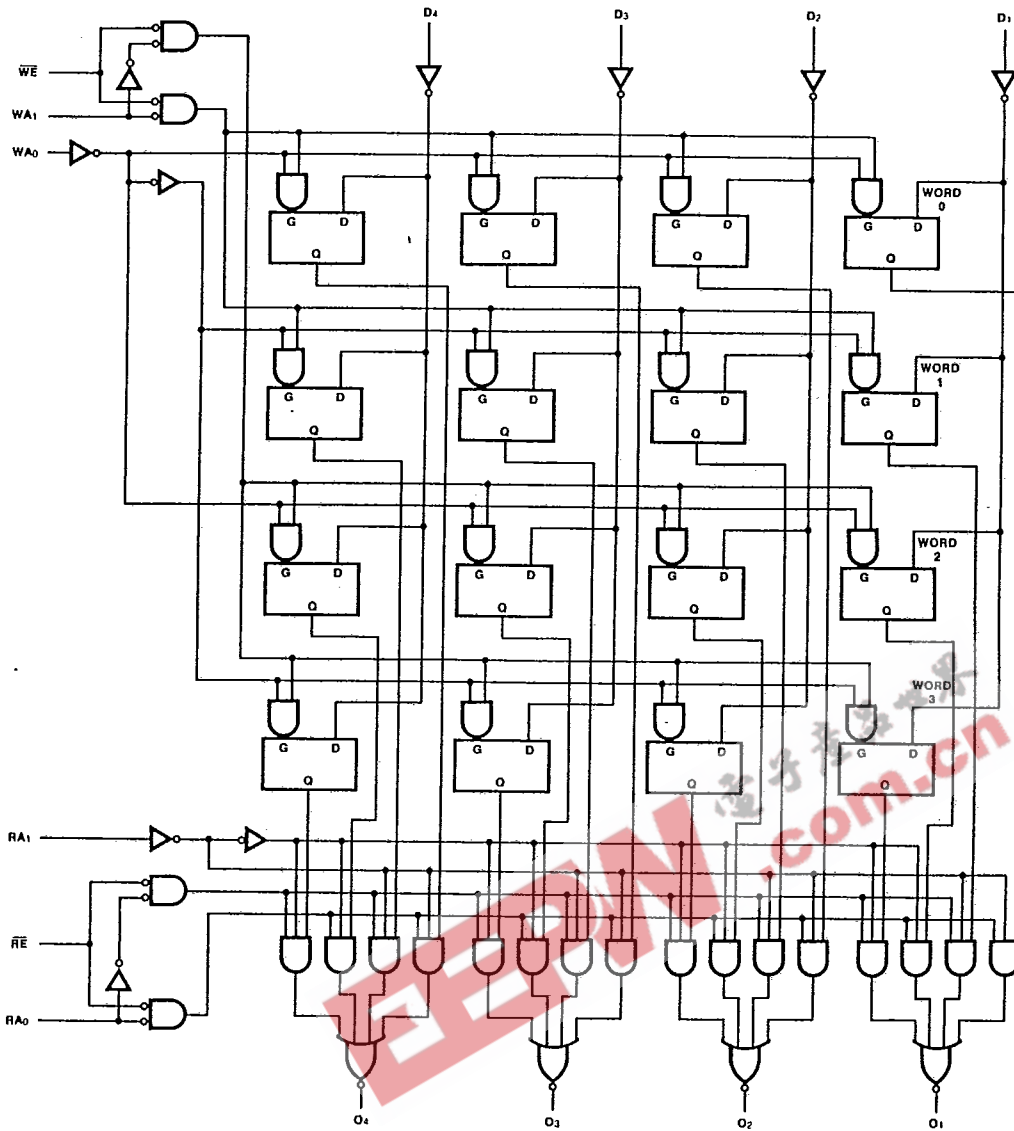


LOGIC SYMBOL



V_{CC} = Pin 16
GND = Pin 8

LOGIC DIAGRAM



4

WRITE FUNCTION TABLE

| WRITE INPUTS | | | D INPUTS TO |
|--------------|-----------------|-----------------|-------------|
| WE | WA ₁ | WA ₀ | |
| L | L | L | Word 0 |
| L | L | H | Word 1 |
| L | H | L | Word 2 |
| L | H | H | Word 3 |
| H | X | X | None (hold) |

READ FUNCTION TABLE

| READ INPUTS | | | OUTPUTS FROM |
|-------------|-----------------|-----------------|---------------|
| RE | RA ₁ | RA ₀ | |
| L | L | L | Word 0 |
| L | L | H | Word 1 |
| L | H | L | Word 2 |
| L | H | H | Word 3 |
| H | X | X | None (HIGH Z) |

H = HIGH Voltage Level

L = LOW Voltage Level

X = Immaterial

DC CHARACTERISTICS OVER OPERATING TEMPERATURE RANGE (unless otherwise specified)

| SYMBOL | PARAMETER | 54/74 | | 54/74LS | | UNITS | CONDITIONS |
|-----------------|----------------------|-------|-----|---------|-----|-------|---|
| | | Min | Max | Min | Max | | |
| I _{OH} | Output HIGH Current | 30 | | 20 | | μA | V _{CC} = Min, V _{OH} = 5.5 V |
| I _{CC} | Power Supply Current | XC | | 40 | | mA | V _{CC} = Max; D _n , \overline{WE} , \overline{RE} = 4.5 V; W _{A_n} , R _{A_n} = Gnd |
| | | XM | | 140 | | | |

AC CHARACTERISTICS: V_{CC} = +5.0 V, T_A = +25° C (See Section 3 for waveforms and load configurations)

| SYMBOL | PARAMETER | 54/74 | | 54/74LS | | UNITS | CONDITIONS |
|--------------------------------------|--|--|-----|--|-----|-------|-----------------|
| | | C _L = 15 pF R _L = 400 Ω | | C _L = 15 pF R _L = 400 Ω | | | |
| | | Min | Max | Min | Max | | |
| t _{PLH} t _{PHL} | Propagation Delay* R _{A0} or R _{A1} to O _n | 35 40 | | 35 35 | | ns | Figs. 3-1, 3-20 |
| t _{PLH} t _{PHL} | Propagation Delay \overline{RE} to O _n | 15 30 | | 30 30 | | ns | Figs. 3-1, 3-5 |
| t _{PLH} t _{PHL} | Propagation Delay \overline{WE} to O _n | 40 45 | | 35 35 | | ns | Figs. 3-1, 3-9 |
| t _{PLH} t _{PHL} | Propagation Delay D _n to O _n | 30 45 | | 35 35 | | ns | Figs. 3-1, 3-5 |

*Measured at least 25 ns after entry of new data at selected location.

AC OPERATING REQUIREMENTS: V_{CC} = +5.0 V, T_A = +25° C

| SYMBOL | PARAMETER | 54/74 | | 54/74LS | | UNITS | CONDITIONS |
|--------------------|---|-------|-----|---------|-----|-------|------------|
| | | Min | Max | Min | Max | | |
| t _s | Setup Time HIGH or LOW D _n to rising \overline{WE} | 10 | | 10 | | ns | Fig. a |
| t _h | Hold Time HIGH or LOW D _n to rising \overline{WE} | 15 | | 5.0 | | ns | |
| t _s | Setup Time HIGH or LOW W _{A_n} to falling \overline{WE} | 15 | | 10 | | ns | |
| t _h | Hold Time HIGH or LOW W _{A_n} to rising \overline{WE} | 5.0 | | 5.0 | | ns | |
| t _w (L) | \overline{WE} or \overline{RE} Pulse Width LOW | 25 | | 25 | | ns | |

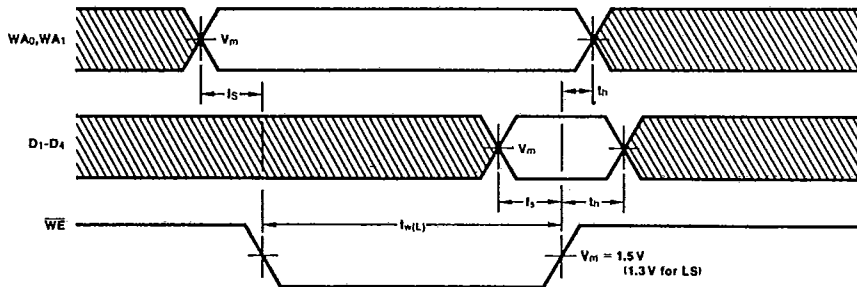


Fig. a