



# YF Series 4 Tumbler Miniature Switchlocks



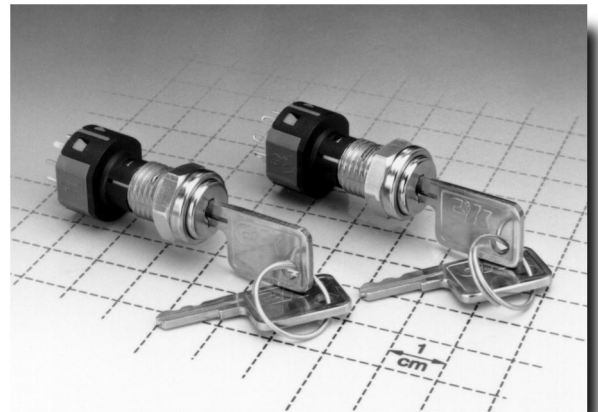
Models Available

## Features/Benefits

- PCB mounting
- Multi-pole and multi-position
- Positive detent
- Low level and power capability

## Typical Applications

- Computer servers
- Point-of-sale terminals
- Cash registers



## Build-A-Switch

Our easy Build-A-Switch concept allows you to mix and match options to create the switch you need. Below is a complete listing of options shown in catalog. To order, simply select desired option from each category and place in the appropriate box. A switchlock with standard options is shown on page H-12. Available options are shown and described on pages H-12 thru H-14. For additional options not shown in catalog, consult Customer Service Center.

Typical Example: Y F 0 0 1 3 2 C 2 0 3 N Q  

### Switch and Lock Function

- YF0013** (STD.) SP, 45° Index, keypull pos. 1
- YF2013** DP, 45° Index, keypull pos. 1
- YF001C** SP, 45° Index, keypull pos. 3
- YF201C** DP, 45° Index, keypull pos. 3
- YF001U** SP, 45° Index, keypull pos. 1 & 3
- YF201U** DP, 45° Index, keypull pos. 1 & 3
- YF0113** SP, 90° Index, keypull pos. 1
- YF2113** DP, 90° Index, keypull pos. 1
- YF011C** SP, 90° Index, keypull pos. 2
- YF211C** DP, 90° Index, keypull pos. 2
- YF011U** SP, 90° Index, keypull pos. 1 & 2
- YF211U** DP, 90° Index, keypull pos. 1 & 2
- YF4513** SP W/Common, 45° Index, keypull pos. 1
- YF451C** SP W/Common, 45° Index, keypull pos. 3
- YF451U** SP W/Common, 45° Index, keypull pos. 1 & 3

### Keying

- 2** (STD.) Two nickel plated brass keys

### Lock Type

- C** (STD.) 4 Tumbler, single bitted lock with detent

### Lock Finish

- 2** (STD.) Stainless steel facing
- 8** Gloss black facing
- F** Polished nickel facing

### Terminations

- 03** (STD.) Solder lug with hole
- 01** Solder lug with notch
- 02** PC Thru-hole
- 07** Solder lug with hole (YF45 models)
- WC** Wire lead

### Mounting Style

- N** (STD.) With nut

### Contact Material

- Q** (STD.) Silver
- B** Gold
- G** Gold over silver

### Seal

- NONE** (STD.) No seal
- E** Epoxy seal

# YF Series 4 Tumbler Miniature Switchlocks



## Specifications

CONTACT RATING: Q contact material: 4 AMPS @ 125 V AC or 28 V DC; 2 AMPS @ 250 V AC (UL/CSA). See page H-14 for additional ratings.

ELECTRICAL LIFE: 10,000 make-and-break cycles at full load.

CONTACT RESISTANCE: Below 10 milliohms typ. initial @ 2-4 V DC, 100 mA, for both silver and gold plated contacts.

INSULATION RESISTANCE:  $10^9$  ohms min.

DIELECTRIC STRENGTH: 1,000 V RMS min. @ sea level.

INDEXING: 45° - 3 pos. max. Models with common terminal, 45° - 3 pos. max. 90° - 2 pos. max.

## Materials

LOCK: Zinc alloy with stainless steel facing. 4 tumbler, single bitted lock with integral detent mechanism.

KEYS: Two nickel plated brass keys with code number.

SWITCH HOUSING: 6/6 Nylon (UL 94V-2).

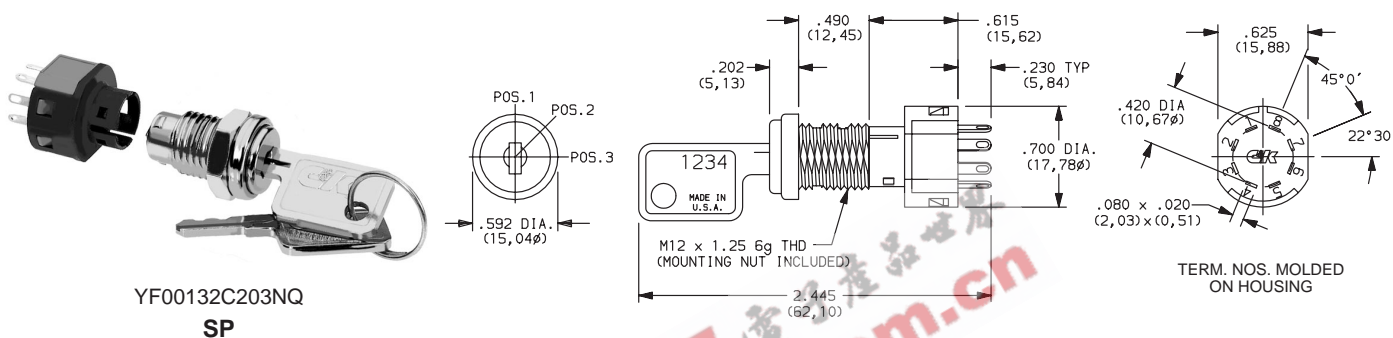
CONTACTS & TERMINALS: Q contact material: Copper, silver plated. See page H-14 for additional contact materials.

MOUNTING NUT: Brass, bright zinc plated.

TERMINAL SEAL: Epoxy.

**NOTE:** Specifications and materials listed above are for switchlocks with standard options. For information on specific and custom switchlocks, consult Customer Service Center.

## SWITCHLOCK WITH STANDARD OPTIONS



YF00132C203NQ  
SP

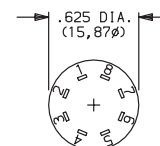
| PART NUMBER   | NO. POLES | INDEXING |
|---------------|-----------|----------|
| YF00132C203NQ | SP        | 45°      |

**NOTE:** For panel mounting information, see page H-14.

## SWITCH AND LOCK FUNCTION

| SINGLE & DOUBLE POLE SWITCHES |                  |                     |                 |                 |                    |                    |          |
|-------------------------------|------------------|---------------------|-----------------|-----------------|--------------------|--------------------|----------|
| NO. POLES                     | MODEL NO.        | CONNECTED TERMINALS |                 |                 | KEY PULL POSITIONS | LOCK CONFIGURATION | INDEXING |
|                               |                  | POS. 1              | POS. 2          | POS. 3          |                    |                    |          |
| SP<br>DP                      | YF0013<br>YF2013 | 8-1<br>8-1, 4-5     | 1-2<br>1-2, 5-6 | 2-3<br>2-3, 6-7 | Position 1         |                    | 45°      |
| SP<br>DP                      | YF001C<br>YF201C | 8-1<br>8-1, 4-5     | 1-2<br>1-2, 5-6 | 2-3<br>2-3, 6-7 | Position 3         |                    |          |
| SP<br>DP                      | YF001U<br>YF201U | 8-1<br>8-1, 4-5     | 1-2<br>1-2, 5-6 | 2-3<br>2-3, 6-7 | Positions 1 & 3    |                    |          |
| SP<br>DP                      | YF0113<br>YF2113 | 8-1<br>8-1, 4-5     | 1-3<br>1-3, 5-7 |                 | Position 1         |                    | 90°      |
| SP<br>DP                      | YF011C<br>YF211C | 8-1<br>8-1, 4-5     | 1-3<br>1-3, 5-7 |                 | Position 2         |                    |          |
| SP<br>DP                      | YF011U<br>YF211U | 8-1<br>8-1, 4-5     | 1-3<br>1-3, 5-7 |                 | Positions 1 & 2    |                    |          |

### TERMINAL NUMBERS



Terminal numbers molded on bottom of housing.

All models with all options when ordered with 'G' or 'Q' contact material.

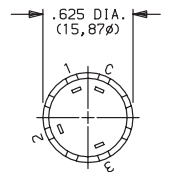


# YF Series 4 Tumbler Miniature Switchlocks

## SWITCH AND LOCK FUNCTION

| SINGLE POLE SWITCHES WITH COMMON |           |                     |        |        |                    |                    |          |
|----------------------------------|-----------|---------------------|--------|--------|--------------------|--------------------|----------|
| NO. POLES                        | MODEL NO. | CONNECTED TERMINALS |        |        | KEY PULL POSITIONS | LOCK CONFIGURATION | INDEXING |
|                                  |           | POS. 1              | POS. 2 | POS. 3 |                    |                    |          |
| SP WITH COMMON                   | YF4513    | C-1                 | C-3    | C-2    | Position 1         |                    | 45°      |
|                                  | YF451C    |                     |        |        | Position 3         |                    |          |
|                                  | YF451U    |                     |        |        | Positions 1 & 3    |                    |          |

### TERMINAL NUMBERS



Terminal numbers marked on bottom of insulator.

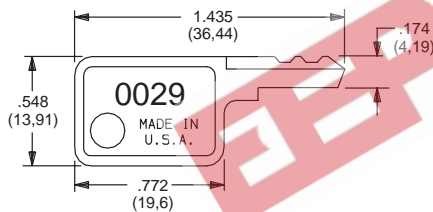
All models with all options when ordered with 'G' or 'Q' contact material.

### LEGEND

- C = Common
- = Detent Positions (45° or 90°)
- ⊙ = Key pull possible in these positions.
- ⊙ = Stop Positions

## KEYING

**2** (STD.) TWO NICKEL PLATED BRASS KEYS

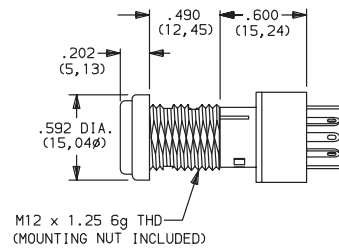


Key part number: 119091029

**NOTE:** All orders keyed alike with code number on key. For more than one key code, replacement keys, or other special features, consult Customer Service Center.

## LOCK TYPE

**C** (STD.) 4 TUMBLER, SINGLE BITTED LOCK WITH DETENT



## LOCK FINISH

**2** (STD.) STAINLESS STEEL FACING

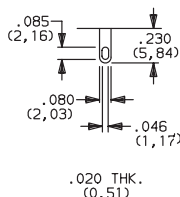
**8** GLOSS BLACK FACING

**F** POLISHED NICKEL PLATED FACING

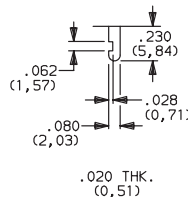


## TERMINATIONS

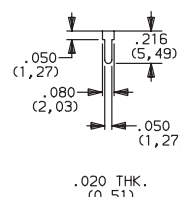
**03** (STD.) SOLDER LUG WITH HOLE



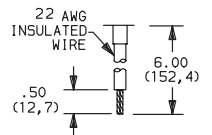
**01** SOLDER LUG WITH NOTCH



**02** PC THRU-HOLE



**WC** WIRE LEAD



### YFOX & YF2X Models

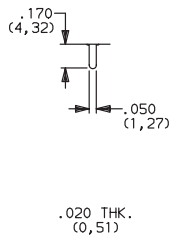
Black wire standard, other colors and lengths available, consult Customer Service Center. UL style 1015.

# YF Series 4 Tumbler Miniature Switchlocks

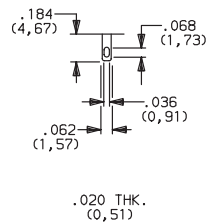


## TERMINATIONS

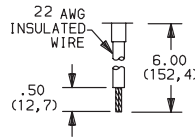
### 02 PC THRU-HOLE



### 07 SOLDER LUG WITH HOLE

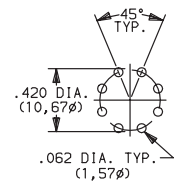


### WC WIRE LEAD



Black wire standard, other colors and lengths available, consult Customer Service Center. UL style 1015.

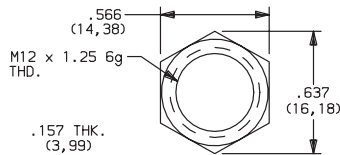
### PC MOUNTING



### YF45 Models

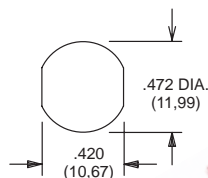
## MOUNTING STYLE

### N (STD.) WITH NUT



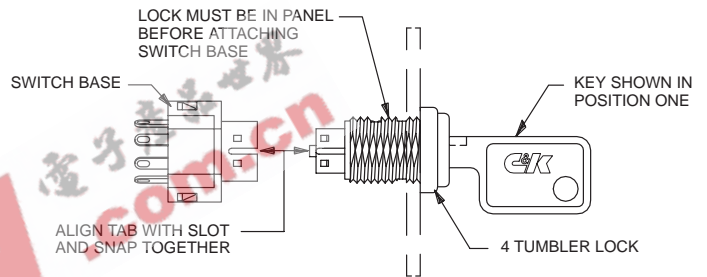
Nut part number: 179090123

### PANEL MOUNTING



Panel thickness: .300 (7,62) max.

## Switch and Lock Assembly Instructions



**NOTE:** Switch installation is permanent. Switch cannot be removed from lock after assembly. Attempts to separate switch and lock may damage switch.

## CONTACT MATERIAL

| OPTION CODE     | CONTACT AND TERMINAL MATERIAL | RATINGS                         |   |
|-----------------|-------------------------------|---------------------------------|---|
| <b>Q (STD.)</b> | SILVER <sup>2</sup>           | POWER                           | 4 AMPS @ 125 V AC OR 28 V DC; 2 AMPS @ 250 V AC (UL/CSA).                                     |
| <b>B</b>        | GOLD <sup>1</sup>             | LOW LEVEL/ DRY CIRCUIT          | 0.4 VA MAX. @ 20 V AC OR DC MAX.  |
| <b>G</b>        | GOLD OVER SILVER <sup>3</sup> | LOW LEVEL/ DRY CIRCUIT OR POWER | 0.4 VA MAX. @ 20 V AC OR DC MAX. OR 4 AMPS @ 125 V AC OR 28 V DC; 2 AMPS @ 250 V AC (UL/CSA). |

CONTACT MATERIAL / APPLICATION RECOMMENDATIONS — SEE CHART, PAGE L-31.

- CONTACTS & TERMINALS: Copper, with gold plate over nickel plate.
- CONTACTS & TERMINALS: Copper, silver plated (standard with all termination options).
- CONTACTS & TERMINALS: Copper, with gold plate over silver plate.

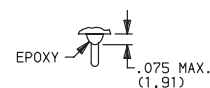
All models with all options when ordered with 'G' or 'Q' contact material.

**NOTE:** 'G' contact material is equivalent to both 'B' and 'Q' contact materials.

## SEAL

### NONE (STD.) NO SEAL

### E EPOXY SEAL



Not available on YF45 models.