



# YF Series 4 Tumbler Miniature Switchlocks



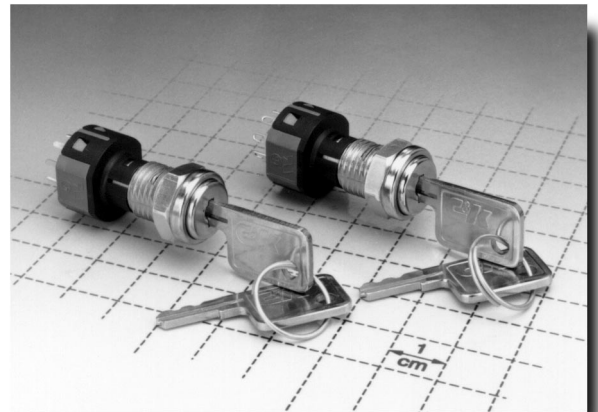
Models Available

## Features/Benefits

- PCB mounting
- Multi-pole and multi-position
- Positive detent
- Low level and power capability

## Typical Applications

- Computer servers
- Point-of-sale terminals
- Cash registers



## Build-A-Switch

Our easy Build-A-Switch concept allows you to mix and match options to create the switch you need. Below is a complete listing of options shown in catalog. To order, simply select desired option from each category and place in the appropriate box. A switchlock with standard options is shown on page H-12. Available options are shown and described on pages H-12 thru H-14. For additional options not shown in catalog, consult Customer Service Center.

Typical Example: Y F 0 0 1 3 2 C 2 0 3 N Q  

### Switch and Lock Function

- YF0013** (STD.) SP, 45° Index, keypull pos. 1
- YF2013** DP, 45° Index, keypull pos. 1
- YF001C** SP, 45° Index, keypull pos. 3
- YF201C** DP, 45° Index, keypull pos. 3
- YF001U** SP, 45° Index, keypull pos. 1 & 3
- YF201U** DP, 45° Index, keypull pos. 1 & 3
- YF0113** SP, 90° Index, keypull pos. 1
- YF2113** DP, 90° Index, keypull pos. 1
- YF011C** SP, 90° Index, keypull pos. 2
- YF211C** DP, 90° Index, keypull pos. 2
- YF011U** SP, 90° Index, keypull pos. 1 & 2
- YF211U** DP, 90° Index, keypull pos. 1 & 2
- YF4513** SP W/Common, 45° Index, keypull pos. 1
- YF451C** SP W/Common, 45° Index, keypull pos. 3
- YF451U** SP W/Common, 45° Index, keypull pos. 1 & 3

### Keying

- 2** (STD.) Two nickel plated brass keys

### Lock Type

- C** (STD.) 4 Tumbler, single bitted lock with detent

### Lock Finish

- 2** (STD.) Stainless steel facing
- 8** Gloss black facing
- F** Polished nickel facing

### Terminations

- 03** (STD.) Solder lug with hole
- 01** Solder lug with notch
- 02** PC Thru-hole
- 07** Solder lug with hole (YF45 models)
- WC** Wire lead

### Mounting Style

- N** (STD.) With nut

### Contact Material

- Q** (STD.) Silver
- B** Gold
- G** Gold over silver

### Seal

- NONE** (STD.) No seal
- E** Epoxy seal

# YF Series 4 Tumbler Miniature Switchlocks



## Specifications

CONTACT RATING: Q contact material: 4 AMPS @ 125 V AC or 28 V DC; 2 AMPS @ 250 V AC (UL/CSA). See page H-14 for additional ratings.

ELECTRICAL LIFE: 10,000 make-and-break cycles at full load.

CONTACT RESISTANCE: Below 10 milliohms typ. initial @ 2-4 V DC, 100 mA, for both silver and gold plated contacts.

INSULATION RESISTANCE:  $10^9$  ohms min.

DIELECTRIC STRENGTH: 1,000 V RMS min. @ sea level.

INDEXING: 45° - 3 pos. max. Models with common terminal, 45° - 3 pos. max. 90° - 2 pos. max.

## Materials

LOCK: Zinc alloy with stainless steel facing. 4 tumbler, single bitted lock with integral detent mechanism.

KEYS: Two nickel plated brass keys with code number.

SWITCH HOUSING: 6/6 Nylon (UL 94V-2).

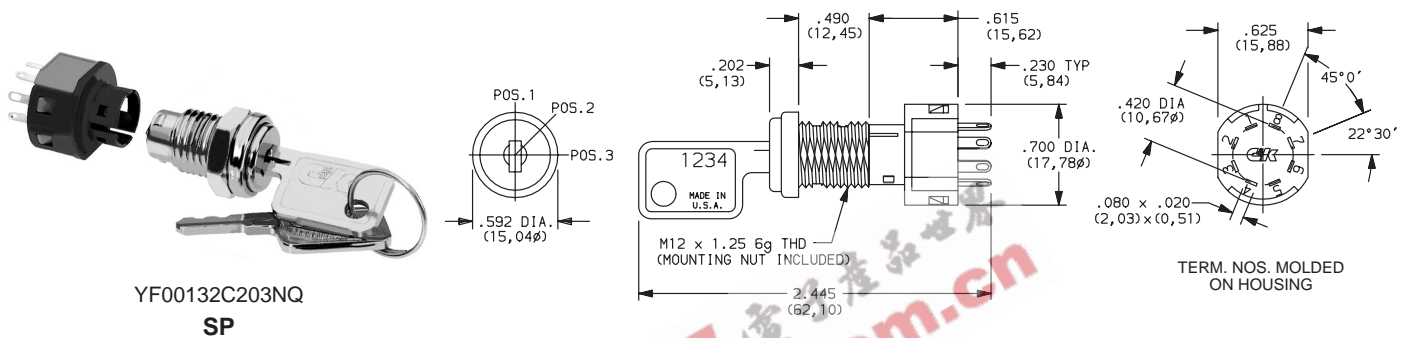
CONTACTS & TERMINALS: Q contact material: Copper, silver plated. See page H-14 for additional contact materials.

MOUNTING NUT: Brass, bright zinc plated.

TERMINAL SEAL: Epoxy.

**NOTE:** Specifications and materials listed above are for switchlocks with standard options. For information on specific and custom switchlocks, consult Customer Service Center.

## SWITCHLOCK WITH STANDARD OPTIONS



YF00132C203NQ  
SP

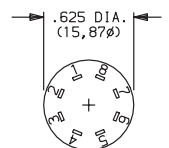
PART NUMBER	NO. POLES	INDEXING
YF00132C203NQ	SP	45°

**NOTE:** For panel mounting information, see page H-14.

## SWITCH AND LOCK FUNCTION

SINGLE & DOUBLE POLE SWITCHES							
NO. POLES	MODEL NO.	CONNECTED TERMINALS			KEY PULL POSITIONS	LOCK CONFIGURATION	INDEXING
		POS. 1	POS. 2	POS. 3			
SP DP	YF0013 YF2013	8-1 8-1, 4-5	1-2 1-2, 5-6	2-3 2-3, 6-7	Position 1		45°
SP DP	YF001C YF201C	8-1 8-1, 4-5	1-2 1-2, 5-6	2-3 2-3, 6-7	Position 3		
SP DP	YF001U YF201U	8-1 8-1, 4-5	1-2 1-2, 5-6	2-3 2-3, 6-7	Positions 1 & 3		
SP DP	YF0113 YF2113	8-1 8-1, 4-5	1-3 1-3, 5-7		Position 1		90°
SP DP	YF011C YF211C	8-1 8-1, 4-5	1-3 1-3, 5-7		Position 2		
SP DP	YF011U YF211U	8-1 8-1, 4-5	1-3 1-3, 5-7		Positions 1 & 2		

### TERMINAL NUMBERS



Terminal numbers molded on bottom of housing.

All models with all options when ordered with 'G' or 'Q' contact material.

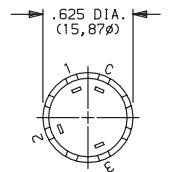


# YF Series 4 Tumbler Miniature Switchlocks

## SWITCH AND LOCK FUNCTION

SINGLE POLE SWITCHES WITH COMMON							
NO. POLES	MODEL NO.	CONNECTED TERMINALS			KEY PULL POSITIONS	LOCK CONFIGURATION	INDEXING
		POS. 1	POS. 2	POS. 3			
SP WITH COMMON	YF4513	C-1	C-3	C-2	Position 1		45°
	Position 3						
	Positions 1 & 3						

### TERMINAL NUMBERS



Terminal numbers marked on bottom of insulator.

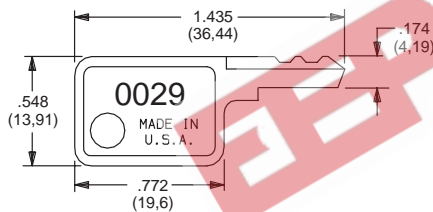
All models with all options when ordered with 'G' or 'Q' contact material.

### LEGEND

- C = Common
- = Detent Positions (45° or 90°)
- ⊙ = Key pull possible in these positions.
- = Stop Positions

## KEYING

**2** (STD.) TWO NICKEL PLATED BRASS KEYS

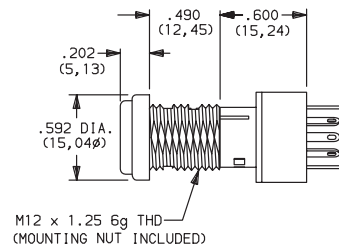


Key part number: 119091029

**NOTE:** All orders keyed alike with code number on key. For more than one key code, replacement keys, or other special features, consult Customer Service Center.

## LOCK TYPE

**C** (STD.) 4 TUMBLER, SINGLE BITTED LOCK WITH DETENT



## LOCK FINISH

**2** (STD.) STAINLESS STEEL FACING



**8** GLOSS BLACK FACING

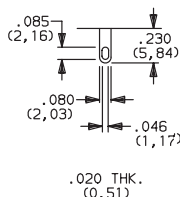


**F** POLISHED NICKEL PLATED FACING

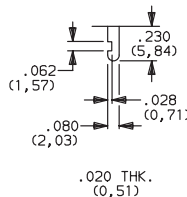


## TERMINATIONS

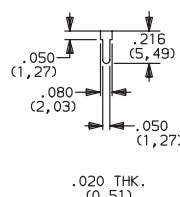
**03** (STD.) SOLDER LUG WITH HOLE



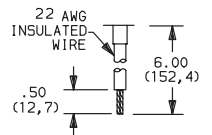
**01** SOLDER LUG WITH NOTCH



**02** PC THRU-HOLE



**WC** WIRE LEAD



### YFOX & YF2X Models

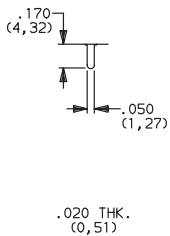
Black wire standard, other colors and lengths available, consult Customer Service Center. UL style 1015.

# YF Series 4 Tumbler Miniature Switchlocks

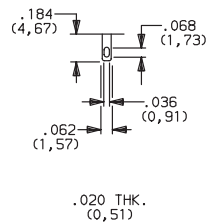


## TERMINATIONS

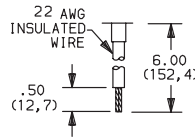
**02** PC THRU-HOLE



**07** SOLDER LUG WITH HOLE

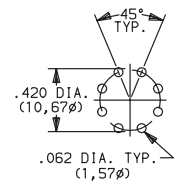


**WC** WIRE LEAD



Black wire standard, other colors and lengths available, consult Customer Service Center. UL style 1015.

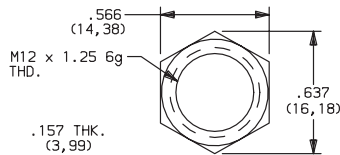
PC MOUNTING



YF45 Models

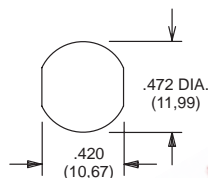
## MOUNTING STYLE

**N** (STD.) WITH NUT



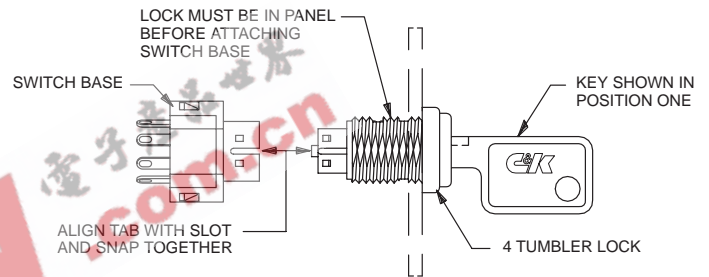
Nut part number: 179090123

PANEL MOUNTING



Panel thickness: .300 (7,62) max.

## Switch and Lock Assembly Instructions



**NOTE:** Switch installation is permanent. Switch cannot be removed from lock after assembly. Attempts to separate switch and lock may damage switch.

## CONTACT MATERIAL

OPTION CODE	CONTACT AND TERMINAL MATERIAL	RATINGS	
<b>Q</b> (STD.)	SILVER <sup>2</sup>	POWER	4 AMPS @ 125 V AC OR 28 V DC; 2 AMPS @ 250 V AC (UL / CSA).
<b>B</b>	GOLD <sup>1</sup>	LOW LEVEL / DRY CIRCUIT	0.4 VA MAX. @ 20 V AC OR DC MAX.
<b>G</b>	GOLD OVER SILVER <sup>3</sup>	LOW LEVEL / DRY CIRCUIT OR POWER	0.4 VA MAX. @ 20 V AC OR DC MAX. OR 4 AMPS @ 125 V AC OR 28 V DC; 2 AMPS @ 250 V AC (UL / CSA).

CONTACT MATERIAL / APPLICATION RECOMMENDATIONS — SEE CHART, PAGE L-31.

- <sup>1</sup> CONTACTS & TERMINALS: Copper, with gold plate over nickel plate.
- <sup>2</sup> CONTACTS & TERMINALS: Copper, silver plated (standard with all termination options).
- <sup>3</sup> CONTACTS & TERMINALS: Copper, with gold plate over silver plate.

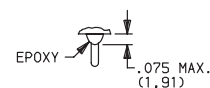
All models with all options when ordered with 'G' or 'Q' contact material.

**NOTE:** 'G' contact material is equivalent to both 'B' and 'Q' contact materials.

## SEAL

**NONE** (STD.) NO SEAL

**E** EPOXY SEAL



Not available on YF45 models.