



YF Series 4 Tumbler Miniature Switchlocks

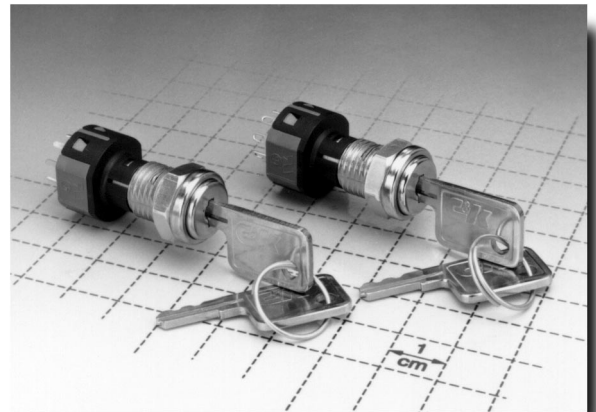


Features/Benefits

- PCB mounting
- Multi-pole and multi-position
- Positive detent
- Low level and power capability

Typical Applications

- Computer servers
- Point-of-sale terminals
- Cash registers



Build-A-Switch

Our easy Build-A-Switch concept allows you to mix and match options to create the switch you need. Below is a complete listing of options shown in catalog. To order, simply select desired option from each category and place in the appropriate box. A switchlock with standard options is shown on page H-12. Available options are shown and described on pages H-12 thru H-14. For additional options not shown in catalog, consult Customer Service Center.

Typical Example: Y F 0 0 1 3 2 C 2 0 3 N Q

Switch and Lock Function

- YF0013** (STD.) SP, 45° Index, keypull pos. 1
- YF2013** DP, 45° Index, keypull pos. 1
- YF001C** SP, 45° Index, keypull pos. 3
- YF201C** DP, 45° Index, keypull pos. 3
- YF001U** SP, 45° Index, keypull pos. 1 & 3
- YF201U** DP, 45° Index, keypull pos. 1 & 3
- YF0113** SP, 90° Index, keypull pos. 1
- YF2113** DP, 90° Index, keypull pos. 1
- YF011C** SP, 90° Index, keypull pos. 2
- YF211C** DP, 90° Index, keypull pos. 2
- YF011U** SP, 90° Index, keypull pos. 1 & 2
- YF211U** DP, 90° Index, keypull pos. 1 & 2
- YF4513** SP W/Common, 45° Index, keypull pos. 1
- YF451C** SP W/Common, 45° Index, keypull pos. 3
- YF451U** SP W/Common, 45° Index, keypull pos. 1 & 3

Keying

- 2** (STD.) Two nickel plated brass keys

Lock Type

- C** (STD.) 4 Tumbler, single bitted lock with detent

Lock Finish

- 2** (STD.) Stainless steel facing
- 8** Gloss black facing
- F** Polished nickel facing

Terminations

- 03** (STD.) Solder lug with hole
- 01** Solder lug with notch
- 02** PC Thru-hole
- 07** Solder lug with hole (YF45 models)
- WC** Wire lead

Mounting Style

- N** (STD.) With nut

Contact Material

- Q** (STD.) Silver
- B** Gold
- G** Gold over silver

Seal

- NONE** (STD.) No seal
- E** Epoxy seal

YF Series 4 Tumbler Miniature Switchlocks



Specifications

CONTACT RATING: Q contact material: 4 AMPS @ 125 V AC or 28 V DC; 2 AMPS @ 250 V AC (UL/CSA). See page H-14 for additional ratings.

ELECTRICAL LIFE: 10,000 make-and-break cycles at full load.

CONTACT RESISTANCE: Below 10 milliohms typ. initial @ 2-4 V DC, 100 mA, for both silver and gold plated contacts.

INSULATION RESISTANCE: 10^9 ohms min.

DIELECTRIC STRENGTH: 1,000 V RMS min. @ sea level.

INDEXING: 45° - 3 pos. max. Models with common terminal, 45° - 3 pos. max. 90° - 2 pos. max.

Materials

LOCK: Zinc alloy with stainless steel facing. 4 tumbler, single bitted lock with integral detent mechanism.

KEYS: Two nickel plated brass keys with code number.

SWITCH HOUSING: 6/6 Nylon (UL 94V-2).

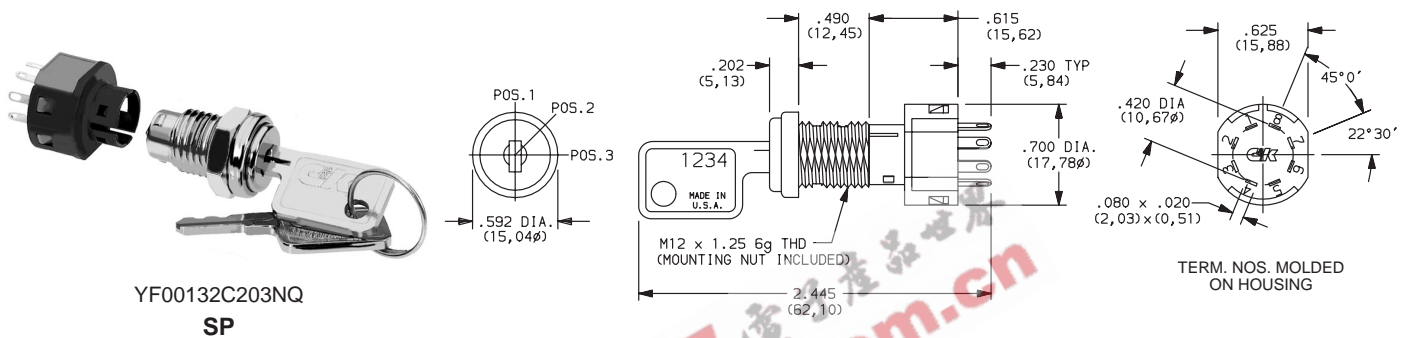
CONTACTS & TERMINALS: Q contact material: Copper, silver plated. See page H-14 for additional contact materials.

MOUNTING NUT: Brass, bright zinc plated.

TERMINAL SEAL: Epoxy.

NOTE: Specifications and materials listed above are for switchlocks with standard options. For information on specific and custom switchlocks, consult Customer Service Center.

SWITCHLOCK WITH STANDARD OPTIONS



YF00132C203NQ
SP

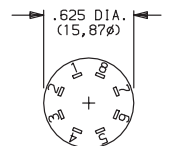
PART NUMBER	NO. POLES	INDEXING
YF00132C203NQ	SP	45°

NOTE: For panel mounting information, see page H-14.

SWITCH AND LOCK FUNCTION

SINGLE & DOUBLE POLE SWITCHES							
NO. POLES	MODEL NO.	CONNECTED TERMINALS			KEY PULL POSITIONS	LOCK CONFIGURATION	INDEXING
		POS. 1	POS. 2	POS. 3			
SP DP	YF0013 YF2013	8-1 8-1, 4-5	1-2 1-2, 5-6	2-3 2-3, 6-7	Position 1		45°
SP DP	YF001C YF201C	8-1 8-1, 4-5	1-2 1-2, 5-6	2-3 2-3, 6-7	Position 3		
SP DP	YF001U YF201U	8-1 8-1, 4-5	1-2 1-2, 5-6	2-3 2-3, 6-7	Positions 1 & 3		
SP DP	YF0113 YF2113	8-1 8-1, 4-5	1-3 1-3, 5-7		Position 1		90°
SP DP	YF011C YF211C	8-1 8-1, 4-5	1-3 1-3, 5-7		Position 2		
SP DP	YF011U YF211U	8-1 8-1, 4-5	1-3 1-3, 5-7		Positions 1 & 2		

TERMINAL NUMBERS



Terminal numbers molded on bottom of housing.

All models with all options when ordered with 'G' or 'Q' contact material.



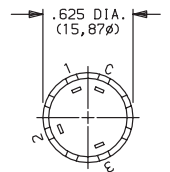


YF Series 4 Tumbler Miniature Switchlocks

SWITCH AND LOCK FUNCTION

SINGLE POLE SWITCHES WITH COMMON							
NO. POLES	MODEL NO.	CONNECTED TERMINALS			KEY PULL POSITIONS	LOCK CONFIGURATION	INDEXING
		POS. 1	POS. 2	POS. 3			
SP WITH COMMON	YF4513	C-1	C-3	C-2	Position 1		45°
	Position 3						
	Positions 1 & 3						

TERMINAL NUMBERS



Terminal numbers marked on bottom of insulator.

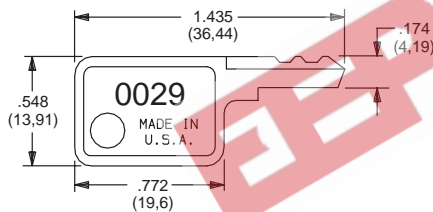
All models with all options when ordered with 'G' or 'Q' contact material.

LEGEND

- C = Common
- = Detent Positions (45° or 90°)
- ⊙ = Key pull possible in these positions.
- ⊙ = Stop Positions

KEYING

2 (STD.) TWO NICKEL PLATED BRASS KEYS

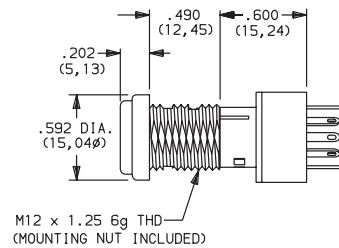


Key part number: 119091029

NOTE: All orders keyed alike with code number on key. For more than one key code, replacement keys, or other special features, consult Customer Service Center.

LOCK TYPE

C (STD.) 4 TUMBLER, SINGLE BITTED LOCK WITH DETENT



LOCK FINISH

2 (STD.) STAINLESS STEEL FACING



8 GLOSS BLACK FACING

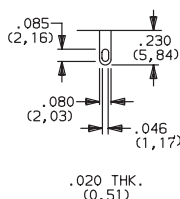


F POLISHED NICKEL PLATED FACING

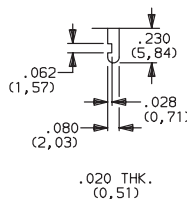


TERMINATIONS

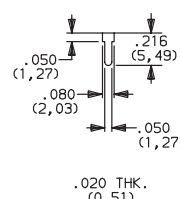
03 (STD.) SOLDER LUG WITH HOLE



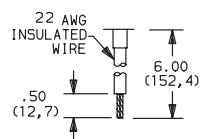
01 SOLDER LUG WITH NOTCH



02 PC THRU-HOLE



WC WIRE LEAD



Black wire standard, other colors and lengths available, consult Customer Service Center. UL style 1015.

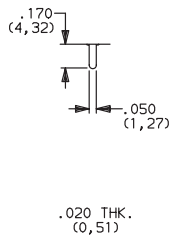
YFOX & YF2X Models

YF Series 4 Tumbler Miniature Switchlocks

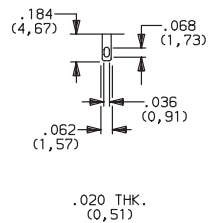


TERMINATIONS

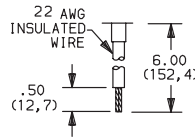
02 PC THRU-HOLE



07 SOLDER LUG WITH HOLE

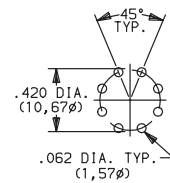


WC WIRE LEAD



Black wire standard, other colors and lengths available, consult Customer Service Center. UL style 1015.

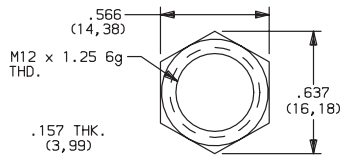
PC MOUNTING



YF45 Models

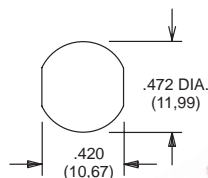
MOUNTING STYLE

N (STD.) WITH NUT



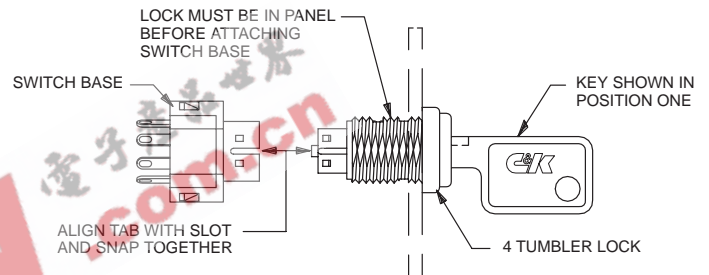
Nut part number: 179090123

PANEL MOUNTING



Panel thickness: .300 (7,62) max.

Switch and Lock Assembly Instructions



NOTE: Switch installation is permanent. Switch cannot be removed from lock after assembly. Attempts to separate switch and lock may damage switch.

CONTACT MATERIAL

OPTION CODE	CONTACT AND TERMINAL MATERIAL	RATINGS	
Q (STD.)	SILVER ²	POWER	4 AMPS @ 125 V AC OR 28 V DC; 2 AMPS @ 250 V AC (UL/CSA).
B	GOLD ¹	LOW LEVEL/ DRY CIRCUIT	0.4 VA MAX. @ 20 V AC OR DC MAX.
G	GOLD OVER SILVER ³	LOW LEVEL/ DRY CIRCUIT OR POWER	0.4 VA MAX. @ 20 V AC OR DC MAX. OR 4 AMPS @ 125 V AC OR 28 V DC; 2 AMPS @ 250 V AC (UL/CSA).

CONTACT MATERIAL / APPLICATION RECOMMENDATIONS — SEE CHART, PAGE L-31.

- ¹ CONTACTS & TERMINALS: Copper, with gold plate over nickel plate.
- ² CONTACTS & TERMINALS: Copper, silver plated (standard with all termination options).
- ³ CONTACTS & TERMINALS: Copper, with gold plate over silver plate.

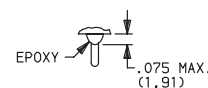
All models with all options when ordered with 'G' or 'Q' contact material.

NOTE: 'G' contact material is equivalent to both 'B' and 'Q' contact materials.

SEAL

NONE (STD.) NO SEAL

E EPOXY SEAL



Not available on YF45 models.