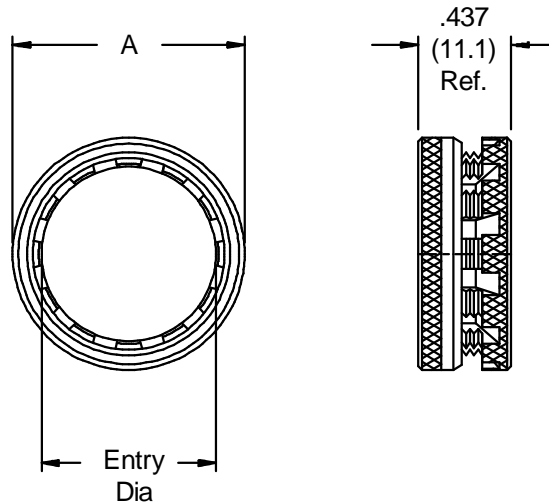


**410-003-06**

Basic Part No. \_\_\_\_\_ Dash No. (Table III)


**TABLE III: DIMENSIONS**

| Dash No. | A Dia        | Entry Dia.   | No. of Slots | Weight in Grams |
|----------|--------------|--------------|--------------|-----------------|
| 02       | .545 (13.8)  | .250 (6.4)   | 3            | 2.268           |
| 03       | .670 (17.0)  | .375 (9.5)   | 4            | 2.722           |
| 04       | .795 (20.2)  | .500 (12.7)  | 6            | 3.175           |
| 05       | .920 (23.4)  | .625 (15.9)  | 8            | 4.082           |
| 06       | 1.045 (26.5) | .750 (19.1)  | 10           | 4.536           |
| 07       | 1.170 (29.7) | .875 (22.2)  | 10           | 4.990           |
| 08       | 1.295 (32.9) | 1.000 (25.4) | 12           | 5.443           |
| 09       | 1.420 (36.1) | 1.125 (28.6) | 15           | 6.350           |
| 10       | 1.687 (42.8) | 1.250 (31.8) | 15           | 10.433          |
| 11       | 1.812 (46.0) | 1.375 (34.9) | 15           | 14.515          |

1. Finish: Body and Nut - Gold Iridite; Spring - Gold Plate.
2. Metric dimensions (mm) are indicated in parentheses.