

Surface Mount

Frequency Mixer

ADE-5+
ADE-5

Level 7 (LO Power +7 dBm) 5 to 1500 MHz



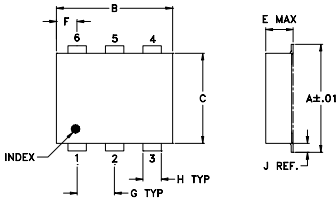
Maximum Ratings

Operating Temperature	-40°C to 85°C
Storage Temperature	-55°C to 100°C
RF Power	50mW
IF Current	40mA

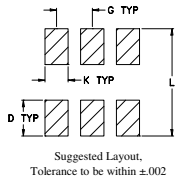
Pin Connections

LO	6
RF	3
IF	2
GROUND	1,4,5

Outline Drawing



PCB Land Pattern

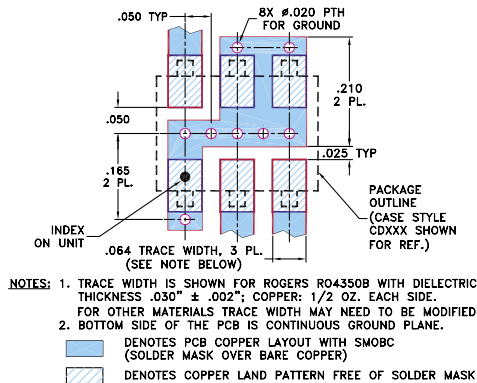


Suggested Layout,
Tolerance to be within ±.002

Outline Dimensions (inch/mm)

A	B	C	D	E	F	G	
.272	.310	.220	.100	.112	.055	.100	
6.91	7.87	5.59	2.54	2.84	1.40	2.54	
H	J	K	L				wt
.030	.026	.065	.300				grams
0.76	0.66	1.65	7.62				0.20

Demo Board MCL P/N: TB-03 Suggested PCB Layout (PL-052)



Features

- low conversion loss, 6.6 dB typ.
- excellent L-R isolation, 40 dB typ.
- excellent IP3, 15 dBm
- aqueous washable
- protected by U.S. Patent 6,133,525

Applications

- cellular
- PCS

CASE STYLE: CD542
PRICE: \$3.45 ea. QTY (10-49)

+ RoHS compliant in accordance with EU Directive (2002/95/EC)

The +Suffix identifies RoHS Compliance. See our web site for RoHS Compliance methodologies and qualifications.

Electrical Specifications

FREQUENCY (MHz)		CONVERSION LOSS (dB)				LO-RF ISOLATION (dB)			LO-IF ISOLATION (dB)			IP3 at center band (dBm)						
LO/RF	IF	Mid-Band m		Total Range	L	M	U	L	M	U								
f_L - f_U	\bar{X}	σ	Max.	Max.	Typ. Min.	Typ. Min.	Typ. Min.	Typ. Min.	Typ. Min.	Typ. Min.	Typ.							
5-1500	DC-1000	6.6	0.10	7.5	9.3	50	40	40	25	33	23	50	40	30	20	20	10	15

1 dB COMP.: +1 dBm typ.

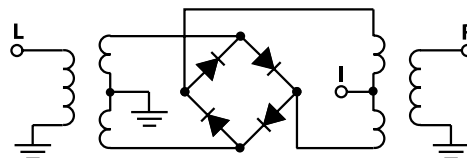
Phase detection, positive polarity

L = low range [f_L to $10 f_L$]
M = mid range [$10 f_L$ to $f_U/2$]
U = upper range [$f_U/2$ to f_U]
m = mid band [$2 f_L$ to $f_U/2$]

Typical Performance Data

Frequency (MHz)		Conversion Loss (dB)	Isolation L-R (dB)	Isolation L-I (dB)	VSWR RF Port (:1)	VSWR LO Port (:1)
RF	LO	LO +7dBm	LO +7dBm	LO +7dBm	LO +7dBm	LO +7dBm
5.0	35.0	7.0	63.9	53.6	1.59	1.91
10.0	40.0	6.6	63.2	52.2	1.51	1.94
50.0	80.0	6.5	56.7	46.6	1.39	1.91
100.0	130.0	6.6	52.7	41.7	1.38	1.91
197.1	227.1	6.7	49.0	36.3	1.41	1.94
295.6	325.6	6.6	47.3	33.5	1.40	2.01
394.1	424.1	6.7	43.7	32.0	1.39	2.20
492.6	522.6	6.5	42.4	30.7	1.35	2.40
500.0	530.0	6.6	41.9	30.5	1.34	2.37
591.1	621.1	6.6	39.7	29.9	1.35	2.40
689.6	719.6	6.6	36.8	28.5	1.28	2.32
788.1	818.1	6.6	35.2	26.0	1.23	2.30
886.6	916.6	6.5	33.4	23.5	1.14	2.32
985.1	1015.1	6.4	33.2	21.8	1.09	2.49
1000.0	1030.0	6.5	33.5	21.5	1.11	2.58
1182.0	1212.0	6.6	35.6	20.4	1.50	2.88
1280.5	1310.5	7.1	36.3	19.2	1.81	2.92
1379.0	1409.0	7.6	34.3	17.9	2.10	2.92
1477.5	1507.5	8.2	31.2	17.1	2.37	2.88
1500.0	1530.0	8.2	30.5	16.8	2.46	2.96

Electrical Schematic



Mini-Circuits
ISO 9001 ISO 14001 CERTIFIED

ALL NEW
minicircuits.com

P.O. Box 350166, Brooklyn, New York 11235-0003 (718) 934-4500 Fax (718) 332-4661 For detailed performance specs & shopping online see Mini-Circuits web site



The Design Engineers Search Engine Provides ACTUAL Data Instantly From MINI-CIRCUITS At: www.minicircuits.com

RF/IF MICROWAVE COMPONENTS

REV. D
M102713
ADE-5
ED-7007/1
DJ/TD/CP/AM
070412
Page 1 of 2

Performance Charts

ADE-5+ ADE-5

