

#### DESCRIPTION

The 60KS200C & 90KS200C series of bidirectional transient voltage suppression modules are designed for use in shipboard equipment and other power servicing equipment. These modules protect sensitive semiconductor components from transients resulting from power interruptions and shore power switch-over. The sub-assemblies are metallurgically bonded and packaged in a hermetically sealed package. The hermetically sealed package provides high reliability in harsh environmental conditions. TVS modules are most often used in applications where discrete TVS diodes do not have high enough surge handling capability to suppress large power surges.

#### FEATURES:

- 60,000 & 90,000 watts Peak Pulse Power (tp = 1.5 x 40µs)
- 200 Volts Bidirectional
- For use in shipboard power servicing equipment
- Bidirectional
- Custom voltages available from factory.

#### MECHANICAL CHARACTERISTICS:

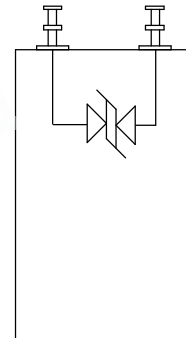
- Molded Case
- Readily solderable terminals
- Marking : Logo, part number, and date code

#### SCREENING:

100% Screening is available per MIL-S-19500/516. For ordering use the following suffix:

- H1 - Submodule screening
- H2 - Submodule & module screening
- H3 - Submodule & module screening + Group B & C

#### SCHEMATIC



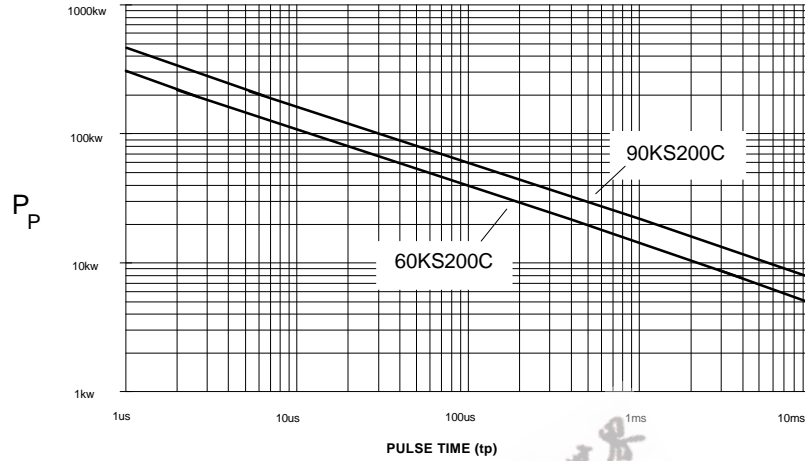
#### MAXIMUM RATINGS

RATING	SYMBOL	VALUE	UNIT
Peak Pulse Power (tp = 1.5 x 40µs)	Ppk	60,000 & 90,000	Watts
Operating Temperature	Tj	-65 to +150	°C
Storage Temperature	Tstg	-65 to +150	°C

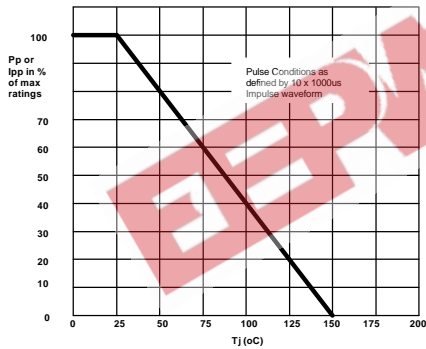
#### ELECTRICAL CHARACTERISTICS @ 25°C (unless otherwise specified)

PART NUMBER	REVERSE STAND-OFF VOLTAGE V <sub>RWM</sub> (V)	REVERSE LEAKAGE CURRENT I <sub>R</sub> (µA)	BREAKDOWN VOLTAGE V <sub>BR</sub> @ I <sub>r</sub> Min. Max (V)	TEST CURRENT I <sub>r</sub> (mA)	MAXIMUM CLAMPING VOLTAGE V <sub>c</sub> @ I <sub>pp</sub> (V)	PEAK PULSE CURRENT I <sub>pp</sub> tp = 1.5 x 40µs (A)	MAXIMUM PEAK PULSE POWER tp = 1.5 x 40µs (kw)
60KS200C	180	10	200 - 225	1	335	180	60
90KS200C	180	0.5	200 - 225	1	280	180	90

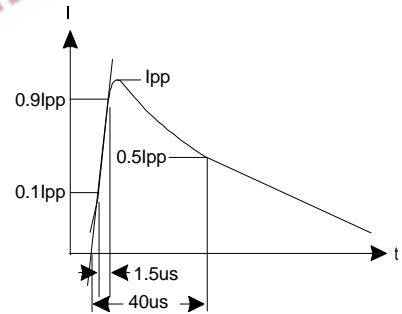
#### PEAK PULSE POWER vs. PULSE TIME



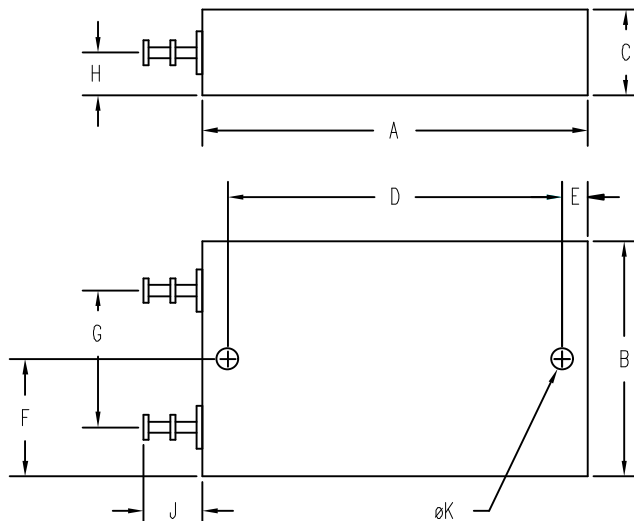
#### PULSE DERATING CURVE



#### 1.5x40us IMPULSE WAVEFORM



#### MECHANICAL OUTLINE



#### 90KS200C

DIM <sup>N</sup>	INCHES		MM		NOTE
	MIN	MAX	MIN	MAX	
A	2.22	2.50	56.3	63.5	
B	1.35	1.90	34.2	48.3	
C	.47	0.55	11.9	13.9	
D	1.88	1.92	47.8	48.8	
E	.135	0.30	3.4	7.6	
F	.66	0.95	16.7	24.1	
G	.98	1.02	24.9	25.9	
H	.26	.29	6.5	7.5	
J	.325	.365	8.2	9.3	
K	.193	.205	5.35	5.65	DIA.

#### 60KS200C

DIM <sup>N</sup>	INCHES		MM		NOTE
	MIN	MAX	MIN	MAX	
A	2.22	2.28	56.3	58.0	
B	1.35	1.40	34.2	35.6	
C	.47	.53	11.9	13.5	
D	1.93	1.97	49.0	50.1	
E	.135	.165	3.4	4.2	
F	.66	.72	16.7	18.3	
G	.77	.83	19.5	21.1	
H	.22	.28	5.5	7.2	
J	.325	.365	8.2	9.3	
K	.120	.130	3.0	3.3	DIA.