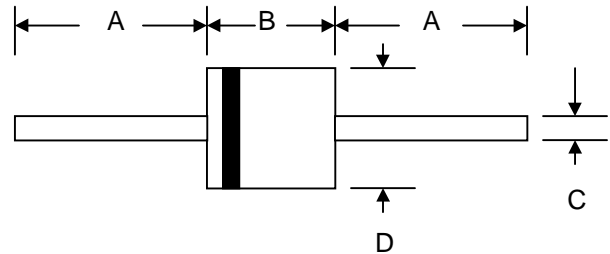


### Features

- Diffused Junction
- Low Forward Voltage Drop
- High Current Capability
- High Reliability
- High Surge Current Capability

### Mechanical Data

- Case: Molded Plastic
- Terminals: Plated Leads Solderable per MIL-STD-202, Method 208
- Polarity: Cathode Band
- Weight: 2.1 grams (approx.)
- Mounting Position: Any
- Marking: Type Number
- Epoxy: UL 94V-O rate flame retardant



P-600		
Dim	Min	Max
A	25.4	—
B	8.60	9.10
C	1.20	1.30
D	8.60	9.10
All Dimensions in mm		

### Maximum Ratings and Electrical Characteristics @ $T_A=25^\circ\text{C}$ unless otherwise specified

Single Phase, half wave, 60Hz, resistive or inductive load.  
 For capacitive load, derate current by 20%.

Characteristic	Symbol	P600A	P600B	P600D	P600G	P600J	P600K	P600M	Unit
Peak Repetitive Reverse Voltage	$V_{RRM}$								
Working Peak Reverse Voltage	$V_{RWM}$	50	100	200	400	600	800	1000	V
DC Blocking Voltage	$V_R$								
RMS Reverse Voltage	$V_{R(RMS)}$	35	70	140	280	420	560	700	V
Average Rectified Output Current (Note 1)	$I_O$	6.0							A
@ $T_A = 60^\circ\text{C}$									
Non-Repetitive Peak Forward Surge Current	$I_{FSM}$	400							A
8.3ms Single half sine-wave superimposed on rated load (JEDEC Method)									
Forward Voltage	$V_{FM}$	1.0							V
@ $I_F = 6.0\text{A}$									
Peak Reverse Current	$I_{RM}$	5.0							$\mu\text{A}$
@ $T_A = 25^\circ\text{C}$									
At Rated DC Blocking Voltage		1.0							mA
@ $T_A = 100^\circ\text{C}$									
Typical Junction Capacitance (Note 2)	$C_j$	150							pF
Typical Thermal Resistance Junction to Ambient (Note 1)	$R_{\theta JA}$	20							K/W
Operating Temperature Range	$T_j$	-50 to +150							$^\circ\text{C}$
Storage Temperature Range	$T_{STG}$	-50 to +150							$^\circ\text{C}$

**\*Glass passivated forms are available upon request**

Note: 1. Leads maintained at ambient temperature at a distance of 9.5mm from the case

2. Measured at 1.0 MHz and applied reverse voltage of 4.0V D.C.

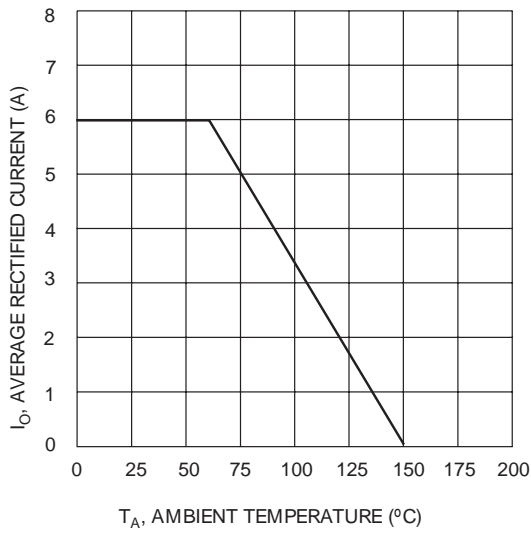


Fig. 1 Forward Current Derating Curve

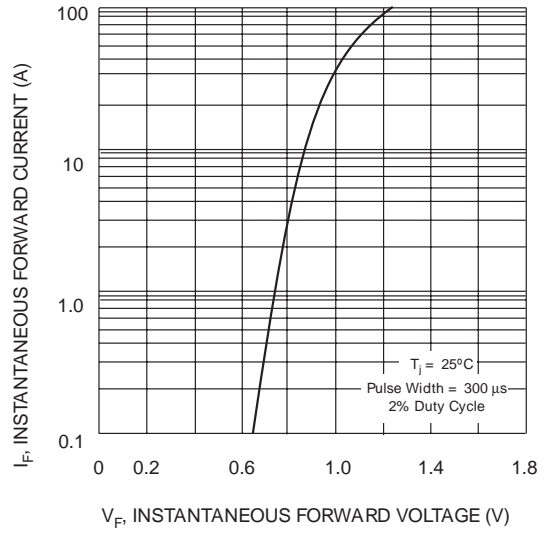


Fig. 2, Typical Forward Characteristics

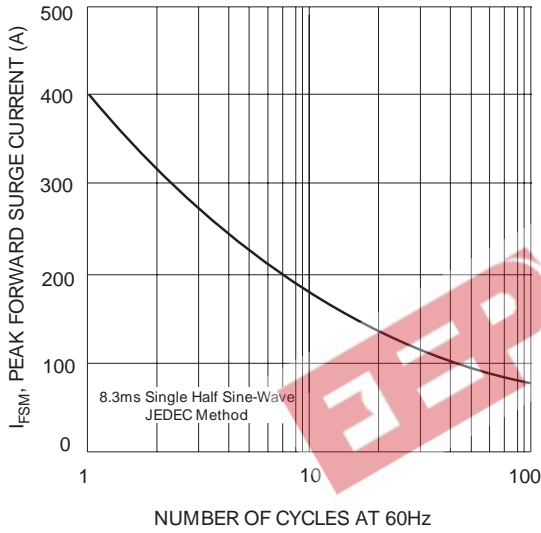


Fig. 3 Maximum Non-Repetitive Peak Forward Surge Current

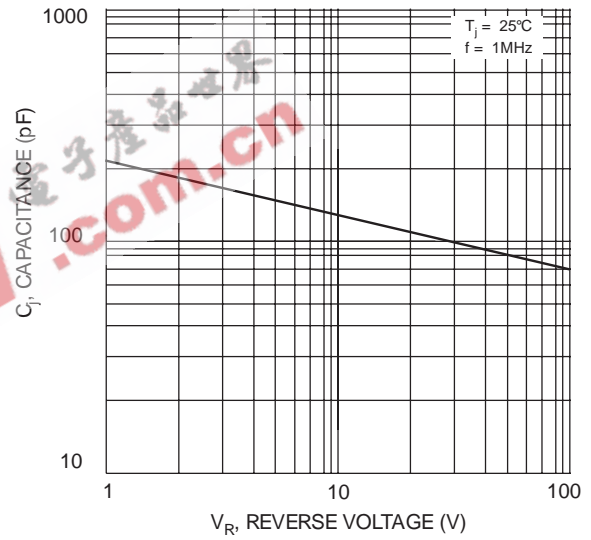


Fig. 4 Typical Junction Capacitance

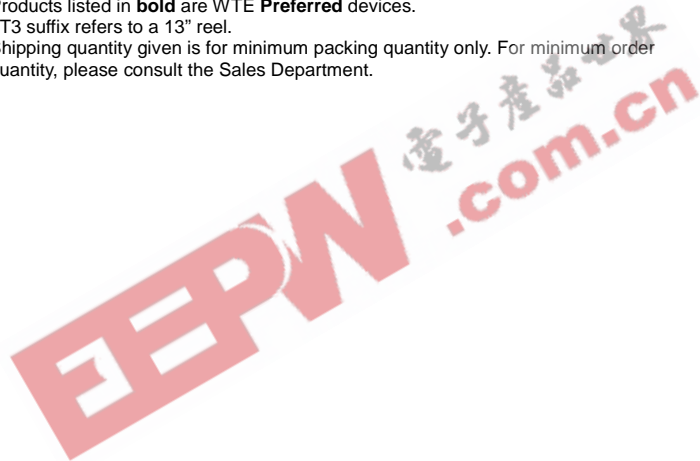
## ORDERING INFORMATION

Product No.◆	Package Type	Shipping Quantity
<b>P600A-T3</b>	P-600	800/Tape & Reel
P600A	P-600	250 Units/Box
<b>P600B-T3</b>	P-600	800/Tape & Reel
P600B	P-600	250 Units/Box
<b>P600D-T3</b>	P-600	800/Tape & Reel
P600D	P-600	250 Units/Box
<b>P600G-T3</b>	P-600	800/Tape & Reel
P600G	P-600	250 Units/Box
<b>P600J-T3</b>	P-600	800/Tape & Reel
P600J	P-600	250 Units/Box
<b>P600K-T3</b>	P-600	800/Tape & Reel
P600K	P-600	250 Units/Box
<b>P600M-T3</b>	P-600	800/Tape & Reel
P600M	P-600	250 Units/Box

Products listed in **bold** are WTE **Preferred** devices.

◆T3 suffix refers to a 13" reel.

Shipping quantity given is for minimum packing quantity only. For minimum order quantity, please consult the Sales Department.



Won-Top Electronics Co., Ltd (WTE) has checked all information carefully and believes it to be correct and accurate. However, WTE cannot assume any responsibility for inaccuracies. Furthermore, this information does not give the purchaser of semiconductor devices any license under patent rights to manufacturer. WTE reserves the right to change any or all information herein without further notice.

**WARNING: DO NOT USE IN LIFE SUPPORT EQUIPMENT.** WTE power semiconductor products are not authorized for use as critical components in life support devices or systems without the express written approval.

**Won-Top Electronics Co., Ltd.**

No. 44 Yu Kang North 3rd Road, Chine Chen Dist., Kaohsiung, Taiwan

**Phone:** 886-7-822-5408 or 886-7-822-5410

**Fax:** 886-7-822-5417

**Email:** sales@wontop.com

**Internet:** <http://www.wontop.com>

*We power your everyday.*