

● PROFESSIONAL LED INDICATORS Ø5.0mm Mounting

**FEATURES**



**603 SERIES**

PACK QUANTITY = 10 PIECES

- Bright nickel plated brass housing
- Sealed to IP67
- Excellent wide viewing angle characteristics
- Suitable for high vibration applications
- Internal reverse protection diode fitted as standard in all voltage models.

**SPECIFICATION**

Ordering Information & Typical Technical Characteristics (Ta = 25°C)

Mean Time Between Failure = 100,000 Hours. Luminous intensity figures refer to the unmodified discrete LED.

PART NUMBER	COLOUR	LENS	VOLTAGE DC (Vdc) Vopr	CURRENT DC (mA) Iopr	LUMINOUS INTENSITY Iv@20mA (mcd)	WAVE LENGTH λp (nm)	OPERATING TEMP Topr	STORAGE TEMP Tstg	
<b>HIGH INTENSITY</b>									
603-301-04	Red	Colour Diffused	2.1	20	900	660	-40 ~ +85^	-40 ~ +85	Yes
603-325-04	Yellow	Colour Diffused	2.2	20	4300	590	-30 ~ +85^	-40 ~ +120	Yes
603-324-04	Green	Colour Diffused	2.2	20	7800	525	-30 ~ +85^	-40 ~ +100	Yes
603-934-04	Blue	Colour Diffused	2.2	20	2300	470	-30 ~ +85^	-40 ~ +100	Yes
603-998-04	Cool White	Colour Diffused	2.2	20	4600	*see below	-30 ~ +85^	-40 ~ +100	Yes
603-301-23	Red	Colour Diffused	24-28	20	900	660	-40 ~ +85^	-40 ~ +85	Yes
603-325-23	Yellow	Colour Diffused	24-28	20	4300	590	-30 ~ +85^	-40 ~ +120	Yes
603-324-23	Green	Colour Diffused	24-28	20	7800	525	-30 ~ +85^	-40 ~ +100	Yes
603-934-23	Blue	Colour Diffused	24-28	20	2300	470	-30 ~ +85^	-40 ~ +100	Yes
603-998-23	Cool White	Colour Diffused	24-28	20	4600	*see below	-30 ~ +85^	-40 ~ +100	Yes
<b>UNITS</b>			<b>Vdc</b>	<b>mA</b>	<b>mcd</b>	<b>nm</b>	<b>°C</b>	<b>°C</b>	



Other voltages AC/DC available. Please contact our Technical sales.

^ = Products must be derated according to the derating information. Each derating graph refers to specific LEDs. Refer to page 3.

<b>998</b>	*Typical emission colour cool white			
x	0.296	0.283	0.330	0.330
y	0.276	0.305	0.339	0.318

Intensities (Iv) and colour shades of white (x,y co-ordinates) may vary between LEDs within a batch.

**How to Order:**

website: [www.marl.co.uk](http://www.marl.co.uk) • email: [sales@marl.co.uk](mailto:sales@marl.co.uk) •

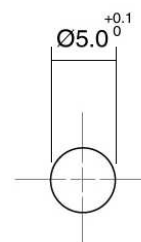
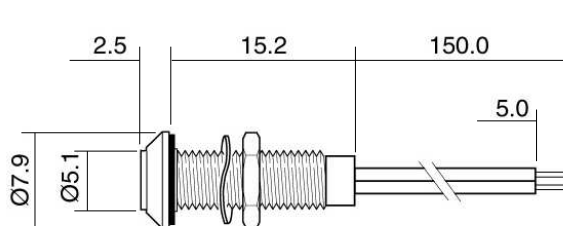
• Telephone +44 (0)1229 582430 • Fax: +44 (0)1229 585155

The information contained in this datasheet does not constitute part of any order or contract and should not be regarded as a representation relating to either products or service. Marl International reserve the right to alter without notice the specification or any conditions of supply for products or service.



BS EN ISO 9001:2000  
Approved Manufacturer

### 603 Series



#### MOUNTING HOLE

Dimensions in mm (Typical)  
Not to scale

Anode termination indicated by red lead.  
Mounting hole to be clean and burr free

### MATERIALS

Body	Bright Nickel Plated Brass
Nut	Bright Nickel Plated Brass
Panel Seal	Viton
Fresnel lens	Polycarbonate
Encapsulation	Epoxy
Lock Washer	Beryllium Copper

### TECHNICAL CHARACTERISTICS

SERIES	MAXIMUM POWER DISSIPATION	MAXIMUM REVERSE VOLTAGE	PANEL CUTOUT	NUT MOUNTING TORQUE	MINIMUM MOUNTING CENTRES	MIN/MAX. PANEL THICKNESS
603	425	3* / 75•	5.0	0.35	x,y =10.0	1.5-8.0
	mW	Vdc	mm	Nm	mm	mm

\* = Current Version • = Voltage Version

### OPTIONAL FLYING LEAD TERMINATIONS

ORDER CODE SUFFIX	SUPPLY VOLTAGE	WIRE COLOUR	WIRE LENGTH	NO/DIAMETER OF CONDUCTORS	DIAMETER OVER INSULATION	COMMENTS
19	DC Products	Red-anode / Black-cathode	1000mm	19/0.15mm	1.2mm	Customised lengths available

website: [www.marl.co.uk](http://www.marl.co.uk) • email: [sales@marl.co.uk](mailto:sales@marl.co.uk) •

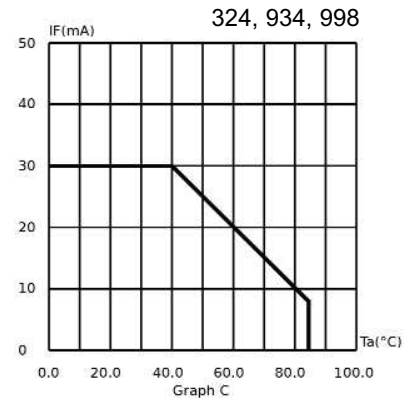
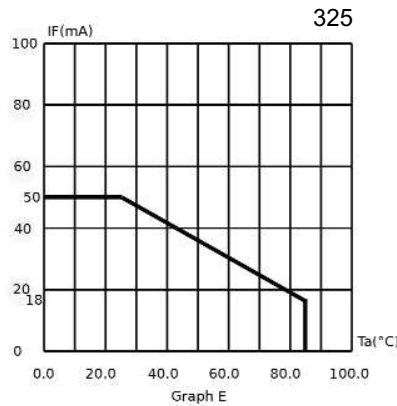
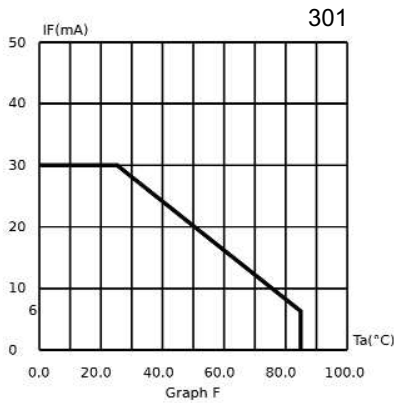
• Telephone +44 (0)1229 582430 • Fax: +44 (0)1229 585155

The information contained in this datasheet does not constitute part of any order or contract and should not be regarded as a representation relating to either products or service. Marl International reserve the right to alter without notice the specification or any conditions of supply for products or service.



BS EN ISO 9001:2000  
Approved Manufacturer

## DERATING INFORMATION



## ALSO AVAILABLE

Part numbers also available in the 603 Series:

PART NO.	COLOUR	VOLTAGE DC (Vdc) Vopr
603-301-21	Red	12 VDC
603-301-22	Red	24 VDC
603-301-42	Red	15 VDC
603-303-04	Red	20mA
603-303-20	Red	5/6 VDC
603-303-21	Red	12 VDC
603-309-04	Yellow	20mA
603-309-20	Yellow	5/6 VDC
603-309-22	Yellow	24 VDC
603-312-04	Green	20mA
603-312-04-15	Green	20mA
603-312-20	Green	5/6 VDC
603-312-21	Green	12 VDC
603-312-22	Green	24 VDC
603-324-21	Green	12 VDC
603-324-22	Green	24 VDC
603-998-20	Warm White	5/6 VDC
UNITS		

The products listed above illustrate all of the options available to order. These products may have custom modifications that alter their operation beyond the generic information contained within this datasheet. Please contact sales for further information.

website: [www.marl.co.uk](http://www.marl.co.uk) • email: [sales@marl.co.uk](mailto:sales@marl.co.uk) •

• Telephone +44 (0)1229 582430 • Fax: +44 (0)1229 585155

The information contained in this datasheet does not constitute part of any order or contract and should not be regarded as a representation relating to either products or service. Marl International reserve the right to alter without notice the specification or any conditions of supply for products or service.



BS EN ISO 9001:2000  
Approved Manufacturer