

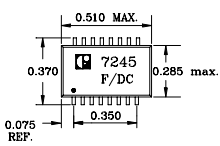


LAN 10 BASE-T TRANSFORMER and CHOKE 7245

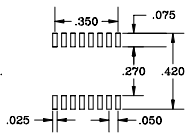
- Supports 10Base2, 10Base5 & 10 Base-T
- Operating temperature range -40°C to +85°C
- Meets IEEE 802.3 standard
- Designed for level One IXT 905



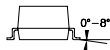
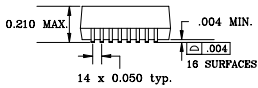
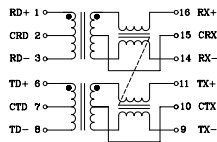
MECHANICAL AND SCHEMATIC (All dimensions in inches)



SUGGESTED PAD LAYOUT



SCHEMATIC



ELECTRICAL SPECIFICATION @ 25°C

Part Number	Turns Ratio ±5%		L _p (µH MIN) @ 100 kHz, 0.020 Vrms		L _s (µH MAX) @ 1 MHz, 0.020 Vrms		C _{eq} (pF MAX) @ 1 MHz, 0.020 Vrms		DCR (Ω MAX)				Dielectric (Vrms MIN) @ 60 Hz, 1 min.
	RX	TX	1-3	6-8	1-3	6-8	1-3	6-8	1-3	14-16	6-8	9-11	
7245	1CT:1CT	1CT:2CT	120	20	0.40	0.20	9	6	0.90	0.90	0.90	0.90	1500