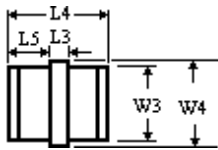
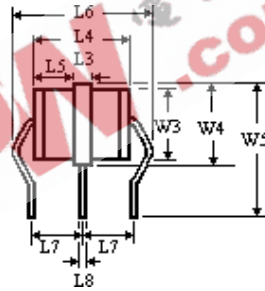


# ● 72B, 72BL Series

Part No.	Nominal dc spark-over voltage	Gas Discharge Tube dc spark-over voltage	Impulse spark-over voltage at 1kV/ $\mu$ s	Nominal impulse discharge current 8/20 $\mu$ s	Nominal impulse discharge current 10/1000 $\mu$ s	Nominal Alternating discharge current at 50Hz, 1s	Insulation resistance		Capacitance at 1kHz
	$V_{sdc}$ (V)	$V_{sdc}$ (V)	$V_{si}$ (V)	$i_{di}$ (KA)	$i_{di}$ (A)	$i_{da}$ (A)	V (V)	$R_{is}$ ( $\Omega$ )	C (pF)
72B75/L	75	60~90	$\leq 700$	10	100	10	50	$\geq 10^9$	$\leq 3$
72B90/L	90	72~108	$\leq 700$				50		
72B150/L	150	120~180	$\leq 700$				50		
72B230/L	230	184~276	$\leq 800$				100		
72B250/L	250	200~300	$\leq 800$				100		
72B300/L	300	240~360	$\leq 900$				100		
72B350/L	350	280~420	$\leq 900$				100		
72B400/L	400	320~480	$\leq 1000$				100		
72B420/L	420	336~504	$\leq 1100$				100		
72B470/L	470	376~564	$\leq 1100$				100		
72B600/L	600	480~720	$\leq 1500$				150		



72BXXX Series



72BXXXL Series

Series	W3	W4	L3	L4	L5
72B	$\phi 8.0 \pm 0.2$	$\phi 8.0$ +0.2 -0.1	$1.5 \pm 0.1$	$10.0 \pm 0.3$	$4.25 \pm 0.15$

Series	W3	W4	W5	L3	L4	L5	L6	L7	L8
72BL	$\phi 8.0 \pm 0.2$	$\phi 8.0$ +0.2 -0.1	$15.0 \pm 0.5$	$1.5 \pm 0.1$	$10.0 \pm 0.3$	$4.25 \pm 0.15$	$13.4_{-2}$	$4.4 \pm 0.3$	$\phi 1.0 \pm 0.1$