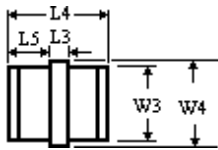
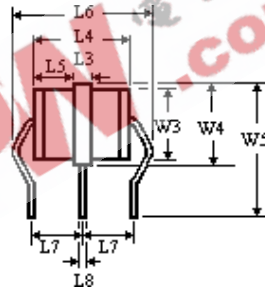


● 72B, 72BL Series

Part No.	Nominal dc spark-over voltage	Gas Discharge Tube dc spark-over voltage	Impulse spark-over voltage at 1kV/ μ s	Nominal impulse discharge current 8/20 μ s	Nominal impulse discharge current 10/1000 μ s	Nominal Alternating discharge current at 50Hz, 1s	Insulation resistance		Capacitance at 1kHz
	V_{sdc} (V)	V_{sdc} (V)	V_{si} (V)	i_{di} (KA)	i_{di} (A)	i_{da} (A)	V (V)	R_{is} (Ω)	C (pF)
72B75/L	75	60~90	≤ 700	10	100	10	50	$\geq 10^9$	≤ 3
72B90/L	90	72~108	≤ 700				50		
72B150/L	150	120~180	≤ 700				50		
72B230/L	230	184~276	≤ 800				100		
72B250/L	250	200~300	≤ 800				100		
72B300/L	300	240~360	≤ 900				100		
72B350/L	350	280~420	≤ 900				100		
72B400/L	400	320~480	≤ 1000				100		
72B420/L	420	336~504	≤ 1100				100		
72B470/L	470	376~564	≤ 1100				100		
72B600/L	600	480~720	≤ 1500				150		



72BXXX Series



72BXXXL Series

Series	W3	W4	L3	L4	L5
72B	$\phi 8.0 \pm 0.2$	$\phi 8.0$ +0.2 -0.1	1.5 ± 0.1	10.0 ± 0.3	4.25 ± 0.15

Series	W3	W4	W5	L3	L4	L5	L6	L7	L8
72BL	$\phi 8.0 \pm 0.2$	$\phi 8.0$ +0.2 -0.1	15.0 ± 0.5	1.5 ± 0.1	10.0 ± 0.3	4.25 ± 0.15	13.4_{-2}	4.4 ± 0.3	$\phi 1.0 \pm 0.1$