



Data Sheet



Product Category: Filters

| Series Number | Package | Description | Last Modified |
|---------------|--------------|-------------------|---------------|
| 736 | Ceramic LT/U | 455 KHz 4 Element | Jan. 01 2008 |

Filter FEATURES

- AM use
- IF filter
- 4 element
- RoHS Compliant



OPERATING CONDITIONS / ELECTRICAL CHARACTERISTICS / PART NUMBER GUIDE

| PART NO. | 6dB Bandwidth | 40dB Bandwidth | Pass Band Ripple | Spurious Attenuation fn ± 100 KHz | Insertion Loss | In/Output Impedance |
|------------|---------------|----------------|------------------|--|----------------|---------------------|
| | KHz min. | KHz max. | dB max. | dB min. | dB max. | Kohm |
| 736-459-AU | ± 17 | ± 40 | 2 | 28 | 4 | 1 |
| 736-459-BU | ± 15 | ± 30 | 2 | 28 | 4 | 1.5 |
| 736-459-CU | ± 12.5 | ± 24 | 2 | 28 | 4 | 1.5 |
| 736-459-DU | ± 10 | ± 20 | 2 | 28 | 4 | 1.5 |
| 736-459-EU | ± 7.5 | ± 15 | 2 | 28 | 6 | 1.5 |
| 736-459-FU | ± 6 | ± 12.5 | 2 | 28 | 6 | 2 |
| 736-459-GU | ± 4.5 | ± 10 | 2 | 28 | 6 | 2 |
| 736-459-HU | ± 3 | ± 9 | 2 | 28 | 6 | 2 |
| 736-459-IU | ± 2 | ± 7.5 | 2 | 28 | 6 | 2 |
| 736-459-HT | ± 3 | ± 9 | 2 | 35 | 6 | 2 |

NOTE: Deviations on all parameters available. Please consult Oscilent for details.

DEFINITIONS: Click on the characteristic names above, for definitions of the particular characteristic.

PACKAGE DIMENSIONS (mm)

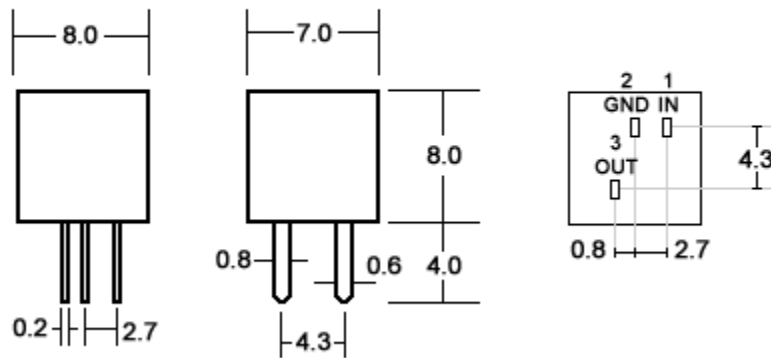


Figure 1) Front and Side Views

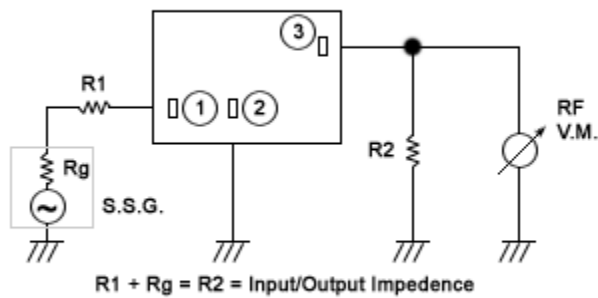


Figure 2) Measuring Circuit

Oscilent Corporation - CALL **949.252.0522**
 18195 East McDermott Street . Building D . Irvine . CA 92614 . USA
 Fax: 949.252.0599 . E-Mail: Sales@Oscilent.com

Series No.: 736