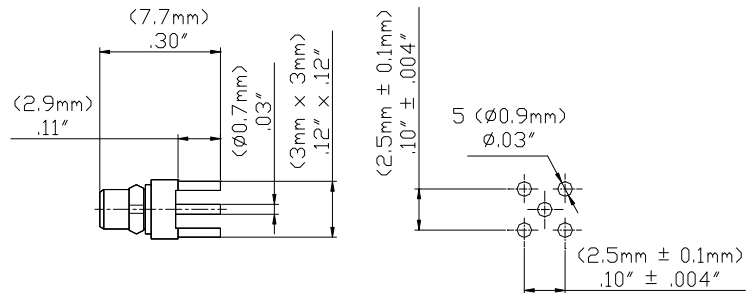


**Model 73038
MMCX PLUG STRAIGHT EDGECARD**



Model 73038 MMCX PLUG STRAIGHT EDGECARD

Snap-on coupling and micro-miniature size for fast connect and disconnect where space is limited

Features

- DC - 6 GHz bandwidth.
- 50% smaller than MCX connectors.
- Connectors allow rotation of 360° for layout flexibility.
- Non-slotted contact design for low RF leakage.
- Meets CECC 22340.
- Perfect for applications where space, weight, performance and ease of assembly are required.

Materials

- Body is machined brass with gold plating.
- Center contacts – Plug is gold plated Phosphor bronze and Jack is gold plated beryllium copper.
- High quality PTFE insulators.
- Crimp Ferrules are gold or nickel plated copper

Specifications

| | |
|-----------------------------------|------------------------------------|
| Impedance | 50 Ω |
| Frequency Range | DC - 6 GHz max |
| Working Voltage | 170 Vrms max. |
| Dielectric Withstanding Voltage | 500 Vrms |
| VSWR | 1.25 max. |
| Center / Outer contact resistance | 10 / 5 mΩ |
| Number of insertions | 500 cycles minimum |
| Insulation resistance | > 500 MΩ |
| Temperature Range | -65° C to 165° C, -85° F to 329° F |

Ordering Information

Model: 73038
Description: MMCX PLUG STRAIGHT EDGECARD

USA: Sales: 800-490-2361
Technical Support: technicalsupport@pomonatest.com
Fax: 425-446-5844

Europe: 31-(0) 40 2675 150 International: 425-446-5500

Where to Buy: www.pomonaelectronics.com

All dimensions are in inches. Tolerances (except noted): .xx = ±.02" (.51 mm), .xxx = ±.005" (.127 mm). All specifications are to the latest revisions. Specifications are subject to change without notice. Registered trademarks are the property of their respective companies.
D2003467 REV 001