

**Data Sheet**

Product Category: Filters

Series Number	Package	Description	Last Modified
715 ~ 718	UM-1 / UM-5; 2 Pole	Monolithic Dip Type	Jan. 01 2002

Filter FEATURES

- Low loss
- High stability for wide temperature ranges
- Sharp cut offs

**OPERATING CONDITIONS / ELECTRICAL CHARACTERISTICS / PART NUMBER GUIDE****GENERAL CHARACTERISTICS**

Operating Temperature Range: -20 ~ 70°C

Mode of Oscillation: 21.40 ~ 30.875 MHz:

Fundamental

45.0 MHz: 3rd Overtone

PART NO. (Figure)		Nominal Frequency	Pass Band Width	Stop Band Width	Ripple	Insertion Loss	Terminal Impedance	Pole
UM-1 (1)	UM-5 (2)	MHz	KHz/dB	KHz/dB	dB	dB	Rt/Ct[ohm/pF]	-
715-M07A-1	715-M07A-5	21.40	±3.75/3	±14/18	0.5	1.5	850//7	2
715-M09A-1	715-M09A-5	21.40	±4.50/3	±12.5/14	0.5	1.5	850//7	2
715-M12A-1	715-M12A-5	21.40	±6.0/3	±20/15	0.5	1.5	1200//2.5	2
715-M15A1-1	715-M15A1-5	21.40	±7.50/3	±25/18	0.5	1.5	1500//3	2
715-M15A2-1	715-M15A2-5	21.40	±7.50/3	±30/18	0.5	2.0	1500//3	2
715-M15A3-1	715-M15A3-5	21.40	±7.50/3	±30/18	1.0	2.0	1500//2	2
715-M20A-1	715-M20A-5	21.40	±10.0/3	±25/10	0.5	1.5	1800//1.5	2
715-M30A-1	715-M30A-5	21.40	±15.0/3	±45/15	0.5	1.5	3000//0.5	2
715-P07A-1	715-P07A-5	21.60	±3.75/3	±14/18	0.5	1.5	850//5	2
715-P12A-1	715-P12A-5	21.60	±6.0/3	±20/15	0.5	1.5	1200//2.5	2
715-P15A-1	715-P15A-5	21.60	±7.50/3	±25/18	0.5	1.5	1500//3	2
715-T07A1-1	715-T07A1-5	21.70	±3.75/3	±14/18	0.5	1.5	850//5	2
715-T07A2-1	715-T07A2-5	21.70	±3.75/3	±15/18	0.5	1.5	850//6	2
715-T09A-1	715-T09A-5	21.70	±4.50/3	±12.5/14	0.5	1.5	1500//4	2
715-T12A-1	715-T12A-5	21.70	±6.0/3	±20/15	0.5	1.5	1200//2.5	2
715-T15A-1	715-T15A-5	21.70	±7.50/3	±25/18	0.5	1.5	1500//3	2
715-T20A-1	715-T20A-5	21.70	±10.0/3	±25/10	0.5	1.5	1800//1.5	2
715-T30A-1	715-T30A-5	21.70	±15.0/3	±45/15	0.5	1.5	3000//0.5	2
715-S07A-1	715-S07A-5	21.75	±3.75/3	±25/18	0.5	1.5	1500//3	2
716-M07A-1	716-M07A-5	23.05	±3.75/3	±12.5/16	0.5	1.5	1600//5	2
716-M15A-1	716-M15A-5	23.05	±7.50/3	±25/18	0.5	1.5	1500//3	2
717-M15A-1	717-M15A-5	30.875	±7.50/3	±25/15	0.5	1.5	800//6	2
718-M07A-1	718-M07A-5	45.00	±3.50/3	±12.5/10	0.5	1.5	510//5.5	2
718-M15A-1	718-M15A-5	45.00	±7.50/3	±25/14	0.5	1.5	550//3	2
718-M30A-1	718-M30A-5	45.00	±15.0/3	±50/10	0.5	1.5	510//5.5	2

NOTE: Deviations on all parameters available. Please consult Oscilent for details.**DEFINITIONS:** Click on the characteristic names above, for definitions of the particular characteristic.

PACKAGE DIMENSIONS (mm)

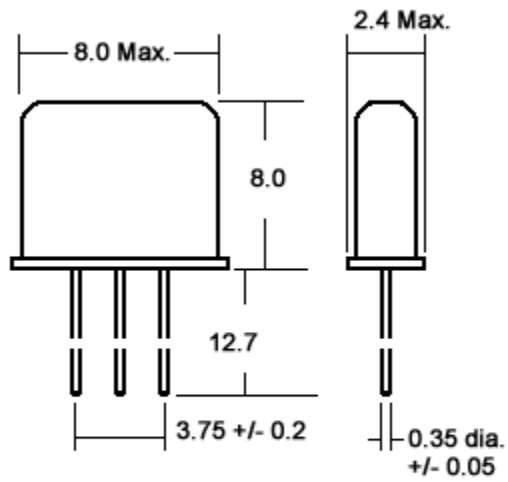


Figure 1) UM-1

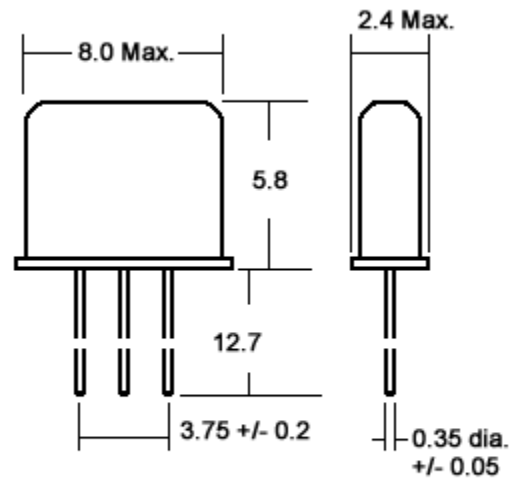


Figure 2) UM-5

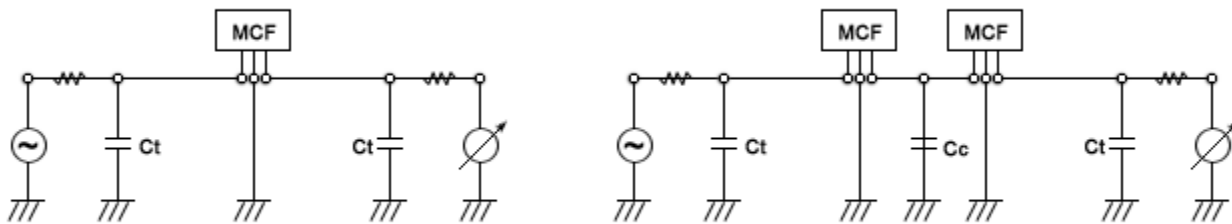


Figure 3) Test Circuits

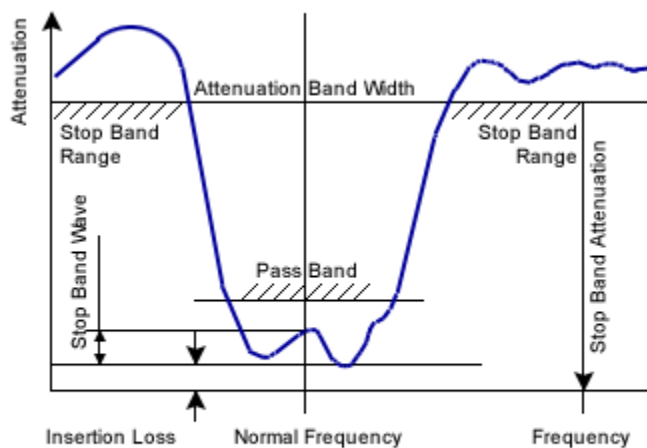


Figure 4) Pass Band Filter Spec-Drawing

[Crystal Oscillators](#) | [Quartz Crystal](#) | [TCXO](#) | [VCXO](#) | [IF SAW Filter](#) | [RF SAW Filter](#) | [Ceramic Resonator](#)
[Crystal Filter](#) | [Ceramic Filter](#) | [SAW Filter / SAW Devices](#) | [Site Map](#)