



Data Sheet

Corporation

telephone
949 252 0522

BACK

Product Category: Filters

| Series Number | Package | Description | Last Modified |
|---------------|---------------|-------------------|---------------|
| 738 | Ceramic LTM/W | 455 KHz 6 Element | Jan. 01 2008 |

Filter FEATURES

- Ultra small size
- 6.3mm profile
- Broadband width
- High selectivity
- 6 element
- RoHS Compliant



OPERATING CONDITIONS / ELECTRICAL CHARACTERISTICS / PART NUMBER GUIDE

| PART NO. | 6dB Bandwidth | 50dB Bandwidth | Pass Band Ripple | Spurious Attenuation fn ±100KHz | Insertion Loss | In/Output Impedance |
|----------------------------|---------------|----------------|------------------|------------------------------------|----------------|---------------------|
| | KHz min. | KHz max. | dB max. | dB min. | dB max. | Kohm |
| 738-455-AW | ±17.5 | ±35 | 2 | 40 | 4 | 1 |
| 738-455-BW | ±15 | ±30 | 2 | 40 | 4 | 1.5 |
| 738-455-CW | ±12.5 | ±24 | 2 | 40 | 4 | 1.5 |
| 738-455-DW | ±10 | ±20 | 2 | 40 | 6 | 1.5 |
| 738-455-EW | ±7.5 | ±15 | 2 | 40 | 6 | 1.5 |
| 738-455-FW | ±6 | ±12.5 | 2 | 40 | 6 | 2 |
| 738-455-GW | ±4.5 | ±10 | 2 | 40 | 6 | 2 |
| 738-455-HW | ±3 | ±9 | 2 | 40 | 6 | 2 |
| 738-455-IW | ±2 | ±7.5 | 2 | 40 | 6 | 2 |
| 738-455-HT | ±3 | ±9 | 2 | 60 | 6 | 2 |
| 738-455-IT | ±2 | ±7.5 | 50 | 60 | 6 | 2 |

NOTE: Deviations on all parameters available. Please consult Oscilent for details.

DEFINITIONS: Click on the characteristic names above, for definitions of the particular characteristic.

PACKAGE DIMENSIONS (mm)

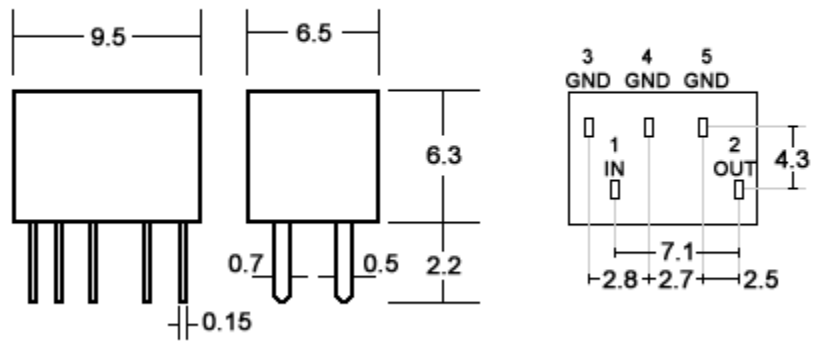


Figure 1) Front and Side Views

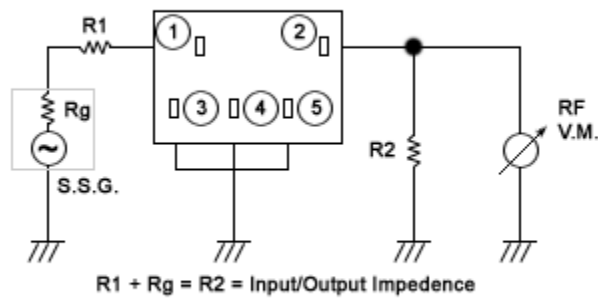


Figure 2) Measuring Circuit

Oscilent Corporation - CALL **949.252.0522**
 18195 East McDermott Street . Building D . Irvine . CA 92614 . USA
 Fax: 949.252.0599 . E-Mail: Sales@Oscilent.com

Series No.: 738