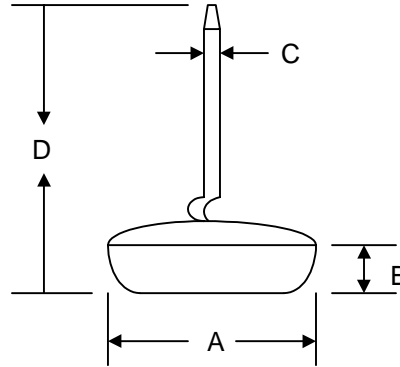


### Features

- Glass Passivated Die Construction
- Low Leakage
- Low Cost
- High Surge Current Capability
- Low Forward
- C-Band Terminal Construction

### Mechanical Data

- Case: All Copper Case and Components Hermetically Sealed
- Terminals: Contact Areas Readily Solderable
- Polarity: Cathode to Case(Reverse Units Are Available Upon Request and Are Designated By An "R" Suffix, i.e. DD502R or DD504SR)
- Polarity: Red Color Equals Standard, Black Color Equals Reverse Polarity
- Mounting Position: Any



Dim	8.4mm Dish		9.5mm Dish	
	Min	Max	Min	Max
A	8.35	8.45	9.50	9.72
B	2.0	2.16	2.0	2.16
C	1.43	1.47	1.43	1.47
D	22.3	—	22.3	—

All Dimensions in mm

"S" Suffix Designates 8.4mm Dish  
No Suffix Designates 9.5mm Dish

### Maximum Ratings and Electrical Characteristics @ $T_A=25^\circ\text{C}$ unless otherwise specified

Single Phase, half wave, 60Hz, resistive or inductive load.  
For capacitive load, derate current by 20%.

Characteristic	Symbol	DD500/ S	DD501/ S	DD502/ S	DD503/ S	DD504/ S	DD505/ S	DD506/ S	Unit
Peak Repetitive Reverse Voltage	$V_{RRM}$	50	100	200	300	400	500	600	V
Working Peak Reverse Voltage	$V_{RWM}$								
DC Blocking Voltage	VR								
RMS Reverse Voltage	$V_{R(RMS)}$	35	70	140	210	280	350	420	V
Average Rectified Output Current @ $T_A = 150^\circ\text{C}$	$I_O$	50							A
Non-Repetitive Peak Forward Surge Current 8.3ms Single half sine-wave superimposed on rated load (JEDEC Method)	$I_{FSM}$	500							A
Forward Voltage @ $I_F = 50\text{A}$	$V_{FM}$	1.1							V
Peak Reverse Current @ $T_A = 25^\circ\text{C}$ At Rated DC Blocking Voltage @ $T_A = 100^\circ\text{C}$	$I_{RM}$	100 500							$\mu\text{A}$
Typical Junction Capacitance (Note 1)	$C_j$	300							pF
Typical Thermal Resistance Junction to Case (Note 2)	$R_{\theta JC}$	0.6							K/W
Operating and Storage Temperature Range	$T_J, T_{STG}$	-65 to +175							$^\circ\text{C}$

Note: 1. Measured at 1.0 MHz and applied reverse voltage of 4.0V D.C.  
2. Thermal Resistance: Junction to case, single side cooled.

## ORDERING INFORMATION

Product No.	Package Type	Shipping Quantity
DD500	Press Fit	200 Units/Tray
DD500S	Press Fit	200 Units/Tray
DD501	Press Fit	200 Units/Tray
DD501S	Press Fit	200 Units/Tray
DD502	Press Fit	200 Units/Tray
DD502S	Press Fit	200 Units/Tray
DD503	Press Fit	200 Units/Tray
DD503S	Press Fit	200 Units/Tray
DD504	Press Fit	200 Units/Tray
DD504S	Press Fit	200 Units/Tray
DD505	Press Fit	200 Units/Tray
DD505S	Press Fit	200 Units/Tray
DD506	Press Fit	200 Units/Tray
DD506S	Press Fit	200 Units/Tray

Shipping quantity given is for minimum packing quantity only. For minimum order quantity, please consult the Sales Department.

EEPW 电子产品世界  
.com.cn

Won-Top Electronics Co., Ltd (WTE) has checked all information carefully and believes it to be correct and accurate. However, WTE cannot assume any responsibility for inaccuracies. Furthermore, this information does not give the purchaser of semiconductor devices any license under patent rights to manufacturer. WTE reserves the right to change any or all information herein without further notice.

**WARNING:** DO NOT USE IN LIFE SUPPORT EQUIPMENT. WTE power semiconductor products are not authorized for use as critical components in life support devices or systems without the express written approval.

**Won-Top Electronics Co., Ltd.**

No. 44 Yu Kang North 3rd Road, Chine Chen Dist., Kaohsiung, Taiwan

**Phone:** 886-7-822-5408 or 886-7-822-5410

**Fax:** 886-7-822-5417

**Email:** sales@wontop.com

**Internet:** <http://www.wontop.com>

*We power your everyday.*