

- Industrial temperature range (-40°C to +85°C)
- SMD package
- 1,000 VDC isolation
- UL 94V-0 package material
- MTBF > 1 million hours
- 5, 9, 12 or 15V out
- Efficiency up to 78%

The AMI series from Wall Industries, Inc. is highly suitable for high speed pick and place machine operation. The operating temperature range of -40°C to +85°C is ideal for designers needing industrial temperature operation.

**MODELS**

MODEL NUMBER	INPUT VOLTAGE (VDC)	OUTPUT VOLTAGE (VDC)	OUTPUT CURRENT (mA)	EFFICIENCY
AM505-200NI	5	5	200	68%
AM509-111NI	5	9	111	75%
AM512-83NI	5	12	83	77%
AM515-66NI	5	15	66	78%
AM1205-200NI	12	5	200	67%
AM1209-111NI	12	9	111	73%
AM1212-83NI	12	12	83	74%
AM1215-66NI	12	15	66	75%

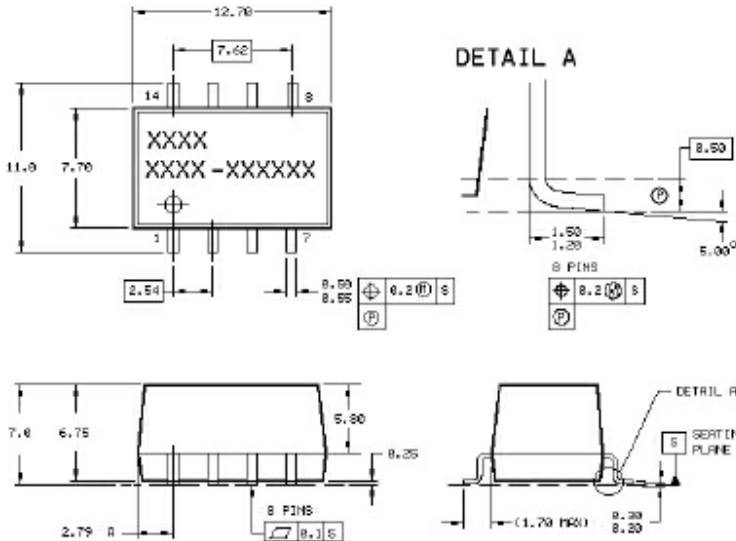
**SPECIFICATIONS**

All specifications apply at 25°C unless otherwise noted.

SPECIFICATION	VALUE
<b>INPUT</b>	Input Voltage Range $\pm 10\%$
<b>OUTPUT</b>	Output Current see model information table
	Voltage Accuracy $\pm 5\%$
	Line Regulation 1.2% / 1% of Vin max.
	Load Regulation (10-100% load)
	5Vout 15% max.
	9Vout 9% max.
	12Vout 7.5% max.
Ripple/Noise (20MHz BW)	5Vout 85mV p-p
	9Vout 75mV p-p
	12Vout 65mV p-p
	15Vout 7% max.
	15Vout 76mV p-p
<b>GENERAL</b>	Efficiency see table
	Isolation Voltage (input to output) 1000VDC
	Switching Frequency 110kHz typ.
<b>ENVIRONMENTAL</b>	Operating Temperature (ambient) -40°C to +85°C
	Storage Temperature -40°C to +100°C
	Cooling free air convection
<b>PHYSICAL</b>	Dimensions see drawing
	Weight > 1.5g
	Case Material plastic UL 94V-0

due to advances in technology, specifications subject to change without notice

**MARKINGS AND DIMENSIONS**



**PIN CONNECTION**

PIN	SINGLE OUTPUT
1	-INPUT
3	+INPUT
7	-OUTPUT
8	+OUTPUT
14	NC

Dimensions: mm

Unless otherwise specified, all tolerances are  $\pm 0.13$

6/30/2005