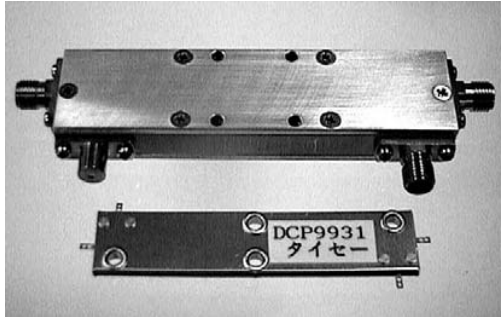


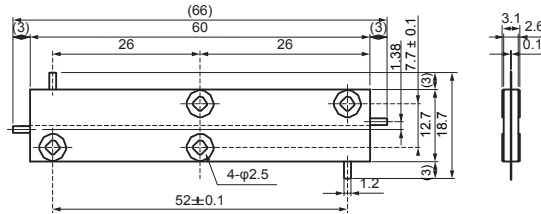
## Directional Couplers (SMA / TAB Type)

### Dimensions

### Instances of Dimension



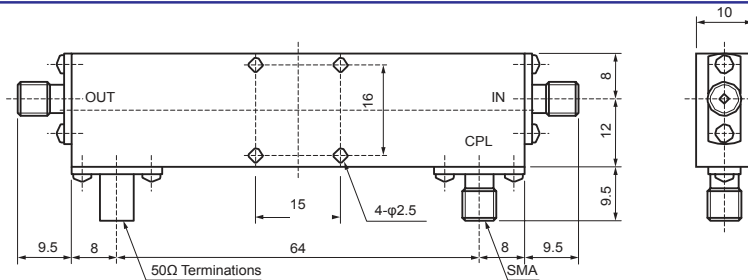
**Fig. 1** TAB Type



Unit:mm

**Fig. 2**

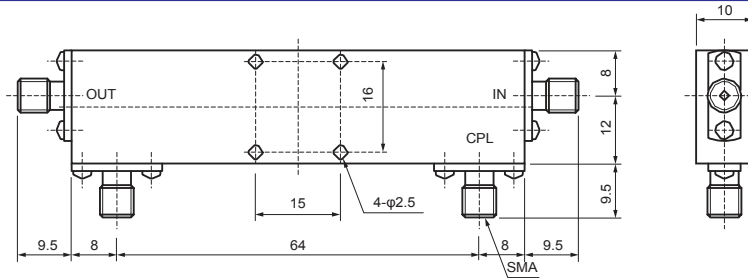
SMA Type



Unit:mm

**Fig. 3**

SMA Type



Unit:mm

### Specifications

#### - SMA Type -

Style No.	fr [MHz]	IL [dB]	Pf [dB]	DI [dB]	Pi [W]	Connector	Fig.
DCP1833-10	400~800	0.70	10.0	20.0	50.0	SMA	*3
DCP1833-30	400~800	0.30	30.0	20.0	50.0	SMA	*2
DCP1831-10D	500~1000	0.70	10.0	20.0	5.0	SMA	Fig.2
DCP1831-20	500~1000	0.40	20.0	20.0	50.0	SMA	*2
DCP1831-30	500~1000	0.30	30.0	20.0	50.0	SMA	Fig.3
DCP1831-41	500~1000	0.30	41.0	20.0	50.0	SMA	Fig.3
DCP1831-50	500~1000	0.30	50.0	20.0	50.0	SMA	Fig.3
DCP1052-10D	1000~2000	0.80	10.0	20.0	5.0	SMA	*2
DCP1052-20D	1000~2000	0.40	20.0	20.0	50.0	SMA	*2
DCP1051-10D	1350~1650	0.80	10.0	20.0	5.0	SMA	*2
DCP1051-20D	1350~1650	0.40	20.0	20.0	50.0	SMA	*2
DCP1952-10D	1500~2500	0.80	10.0	20.0	5.0	SMA	*2
DCP1952-20D	1500~2500	0.40	20.0	20.0	50.0	SMA	*2
DCP1952-30D	1500~2500	0.30	30.0	18.0	50.0	SMA	*2
DCP1951-10D	1800~2200	0.80	10.0	20.0	5.0	SMA	*2
DCP1951-20D	1800~2200	0.40	20.0	20.0	50.0	SMA	*2
DCP1951-30D	1800~2200	0.30	30.0	18.0	50.0	SMA	*2

#### - TAB Type -

Style No.	fr [MHz]	IL [dB]	Pf [dB]	DI [dB]	Pi [W]	Terminal	Fig.
DCP9931-10	800~1000	0.90	10.0	20.0	25.0	TAB	Fig.1
DCP9951-10	1400~1600	0.40	10.0	20.0	25.0	TAB	*2

\*1 As to the item with directive terminal connected to directly the termination, this is shown the alphabet D for the last digit of this item.

\*2 Please consult for the dimensions.

\*3 Complied with custom designed requirements.

fr : Frequency Range

IL : Insertion Loss

Pf : Coupling

DI : Directivity

Pi : Input Power

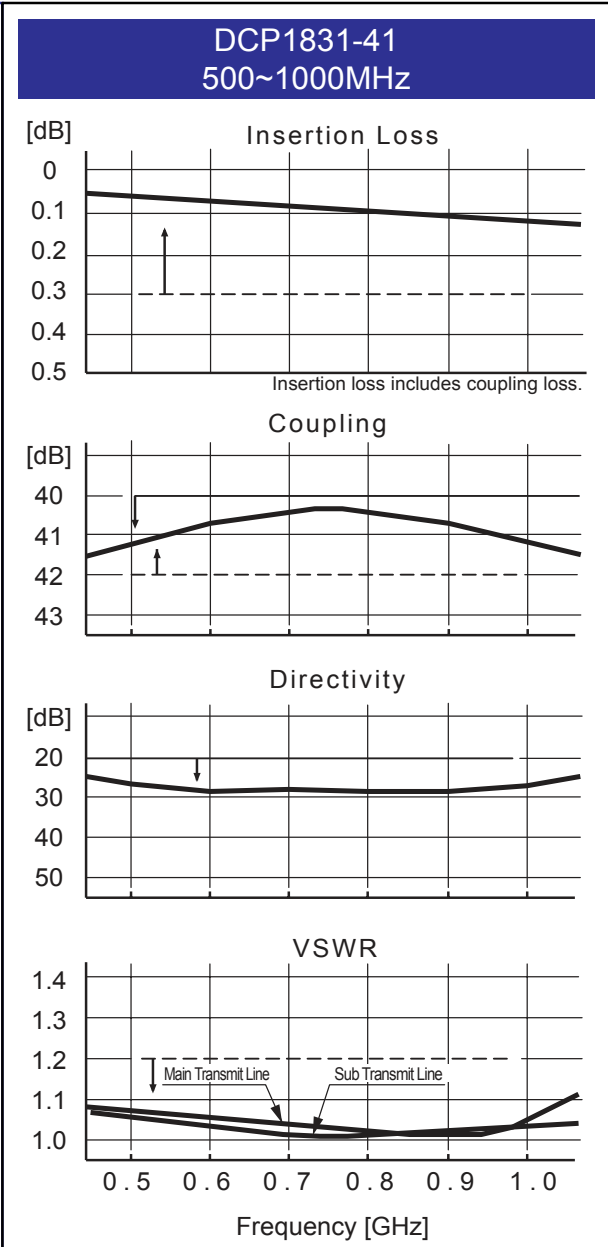
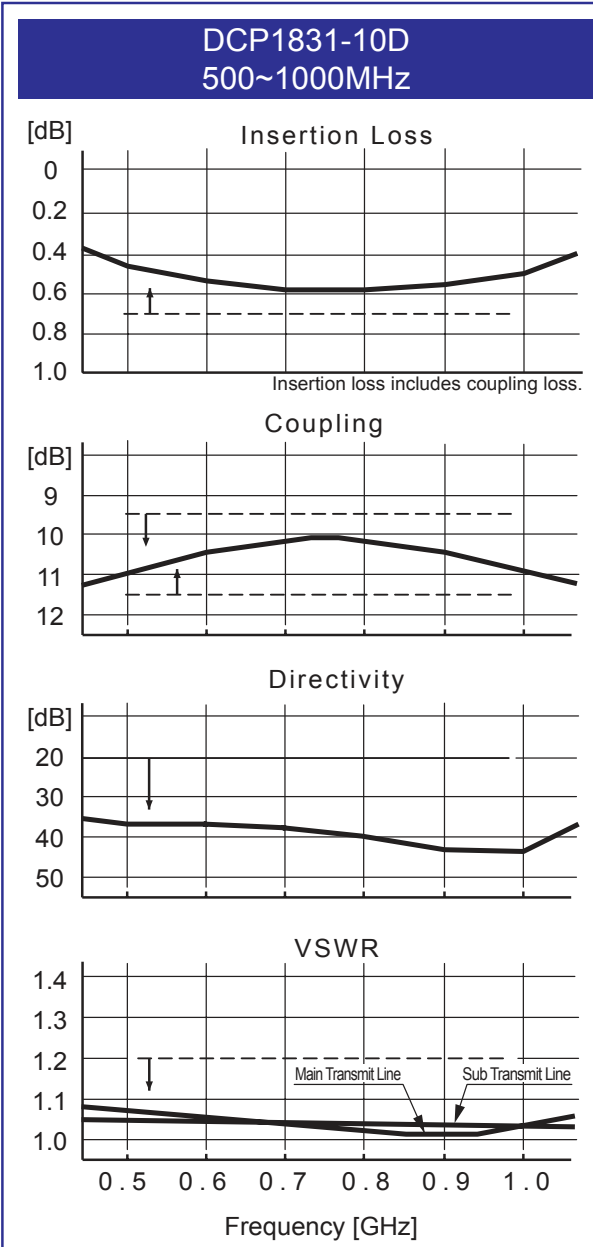


# Directional Couplers

The content of this specification may change without notification 09/18/08



## Typical Performance



Specifications of products are subject to change without notice.



188 Technology Drive, Unit H, Irvine, CA 92618  
TEL: 949-453-9888 • FAX: 949-453-8889