

### INTRODUCTION

Adam Tech Right Angle .283" footprint Machine Contact PCB D-Sub connectors are a popular interface for many I/O applications. Offered in 9, 15, 25 and 37 positions they are a good choice for a high reliability industry standard connection. These connectors are manufactured with precision machine turned contacts and offer an exceptional high reliability connection. They are available in a choice of contact plating and a wide selection of mating and mounting options.

### FEATURES:

- Exceptional Machine Contact connection
- Industry standard compatibility
- Durable metal shell design
- Precision turned screw machined contacts
- Variety of Mating and mounting options

### MATING CONNECTORS:

Adam Tech D-Subminiatures and all industry standard D-Subminiature connectors.

### SPECIFICATIONS:

#### Material:

Standard insulator: PBT, 30% glass reinforced, rated UL94V-0  
 Optional Hi-Temp insulator: Nylon 6T rated UL94V-0  
 Insulator Colors: White (Black optional)  
 Contacts: Phosphor Bronze  
 Shell: Steel, Tin plated  
 Hardware: Brass, Nickel plated

#### Contact Plating:

Gold Flash (15 and 30 µin Optional) over Nickel underplate.

#### Electrical:

Operating voltage: 250V AC / DC max.  
 Current rating: 5 Amps max.  
 Contact resistance: 20 mΩ max. initial  
 Insulation resistance: 5000 MΩ min.  
 Dielectric withstanding voltage: 1000V AC for 1 minute

#### Mechanical:

Insertion force: 0.75 lbs max  
 Extraction force: 0.44 lbs min

#### Temperature Rating:

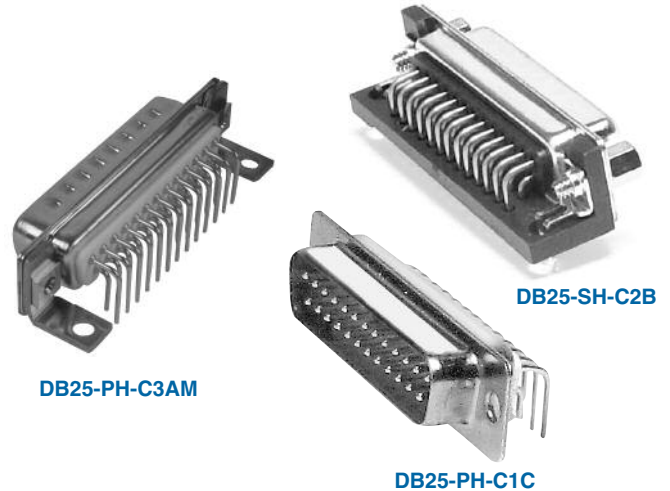
Operating temperature: -65°C to +125°C  
 Soldering process temperature:  
 Standard insulator: 235°C  
 Hi-Temp insulator: 260°C

### PACKAGING:

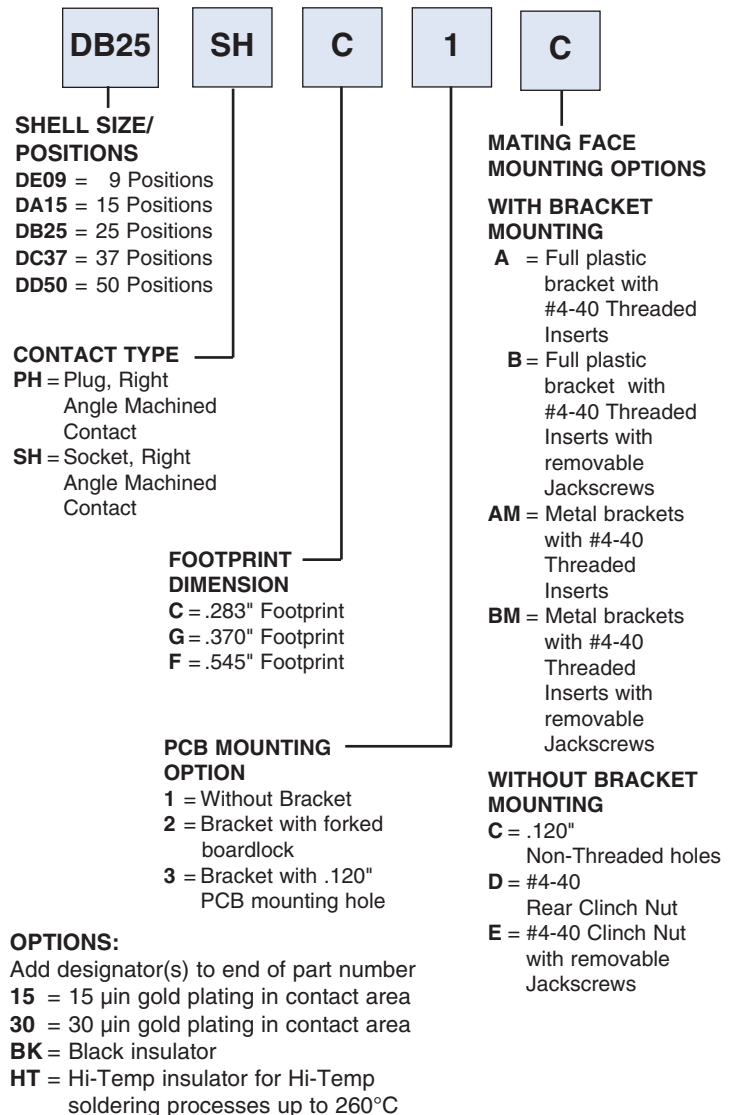
Anti-ESD plastic trays

### APPROVALS AND CERTIFICATIONS:

UL Recognized File No. E224053  
 CSA Certified File No. LR1578596



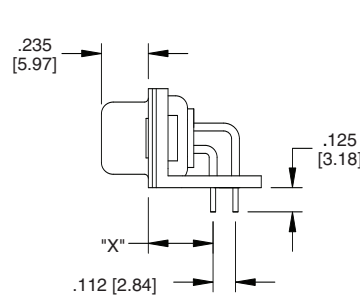
### ORDERING INFORMATION



### OPTIONS:

Add designator(s) to end of part number  
 15 = 15 µin gold plating in contact area  
 30 = 30 µin gold plating in contact area  
 BK = Black insulator  
 HT = Hi-Temp insulator for Hi-Temp  
 soldering processes up to 260°C

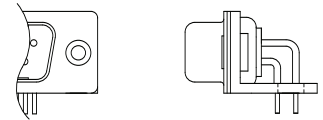
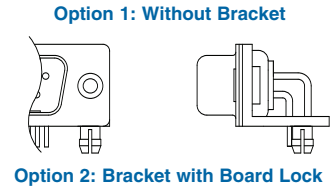
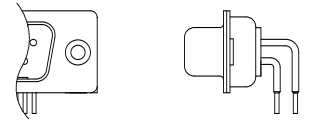
### PLUG



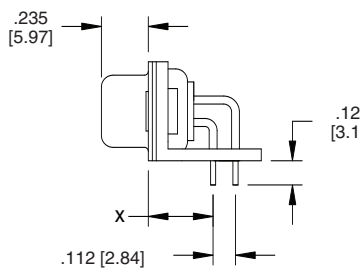
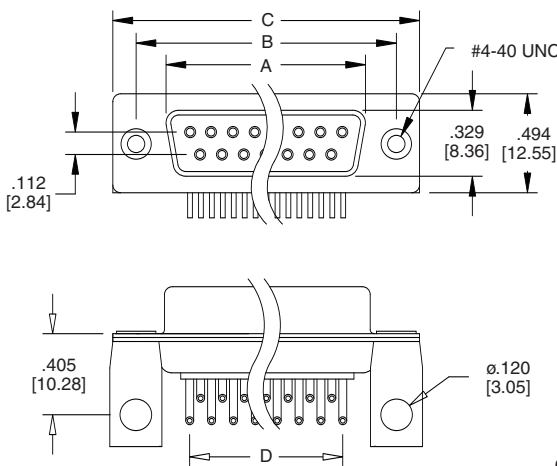
X = FO OTPRINT DISTANCE  
 C = .283 [7.20] FOOTPRINT  
 G = .370 [9.40] FOOTPRINT  
 F = .545 [13.84] FOOTPRINT

Choice of Plastic or Metal Bracket  
 Metal Bracket version shown

### PCB MOUNTING OPTIONS



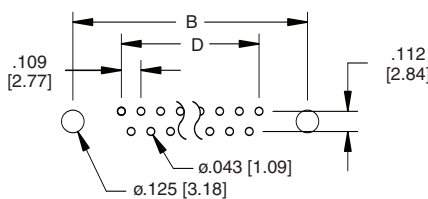
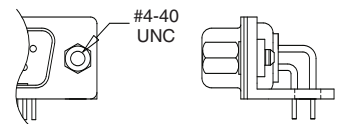
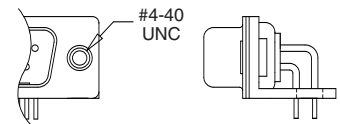
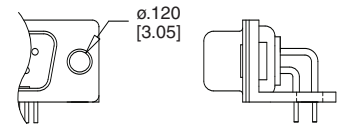
### SOCKET



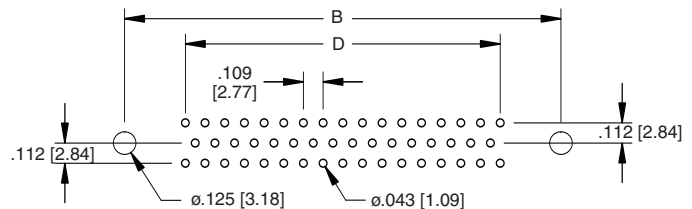
X = FO OTPRINT DISTANCE  
 C = .283 [7.20] FOOTPRINT  
 G = .370 [9.40] FOOTPRINT  
 F = .545 [13.84] FOOTPRINT

Choice of Plastic or Metal Bracket  
 Metal Bracket version shown

### MATING FACE MOUNTING OPTIONS



Recommended PCB Layout 9, 15, 25 & 37 Position



Recommended PCB Layout 50 Position

Unit: Inch / mm

| Positions | PLUG          | SOCKET        | DIMENSIONS    |               |               |
|-----------|---------------|---------------|---------------|---------------|---------------|
|           | A             | A             | B             | C             | D             |
| 9         | .666 [16.92]  | .643 [16.33]  | .984 [24.99]  | 1.213 [30.81] | .436 [11.08]  |
| 15        | .994 [25.25]  | .971 [24.66]  | 1.312 [33.32] | 1.541 [39.14] | .763 [19.39]  |
| 25        | 1.534 [38.96] | 1.511 [38.38] | 1.852 [47.04] | 2.088 [53.04] | 1.310 [33.24] |
| 37        | 2.182 [55.43] | 2.159 [54.84] | 2.500 [63.50] | 2.729 [69.32] | 1.963 [49.86] |
| 50        | 2.790 [52.80] | 2.016 [52.34] | 2.402 [61.00] | 2.646 [67.20] | 1.744 [44.32] |