

### INTRODUCTION:

Adam Tech Right Angle slimline PCB tail D-Sub connectors are a popular interface for many I/O applications. Offered in 9, 15 and 25 positions they are an excellent choice for a low cost industry standard connection and are ideal for low profile design requirements. Adam Tech connectors are manufactured with precision stamped contacts offering a choice of contact plating and a wide selection of mating and mounting options.

### FEATURES:

- Short profile space saving design
- Industry standard compatibility
- Durable metal shell design
- Precision formed contacts
- Variety of Mating and mounting options

### MATING CONNECTORS:

Adam Tech D-Subminiatures and all industry standard D-Subminiature connectors.

### SPECIFICATIONS:

#### Material:

Standard insulator: PBT, 30% glass reinforced, rated UL94V-0  
Optional Hi-Temp insulator: Nylon 6T  
Insulator Color: Black  
Contacts: Phosphor Bronze  
Shell: Steel, Tin or Zinc plated  
Hardware: Brass, Nickel plated

#### Contact Plating:

Gold Flash (15 and 30  $\mu$ m Optional) over Nickel underplate overall.

#### Electrical:

Operating voltage: 250V AC / DC max.  
Current rating: 5 Amps max.  
Contact resistance: 20 m $\Omega$  max. initial  
Insulation resistance: 5000 M $\Omega$  min.  
Dielectric withstanding voltage: 1000V AC for 1 minute

#### Mechanical:

Insertion force: 0.75 lbs max  
Extraction force: 0.44 lbs min

#### Temperature Rating:

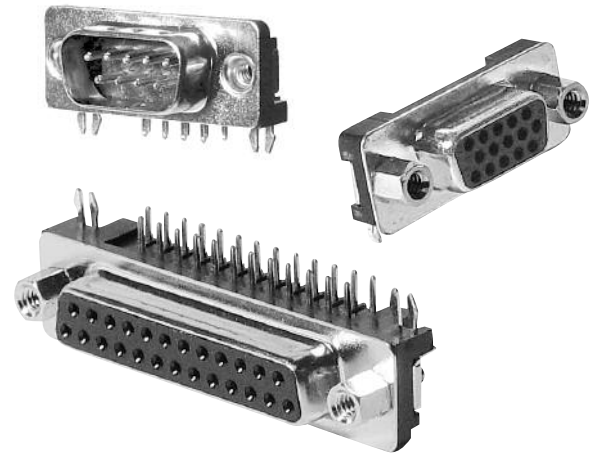
Operating temperature: -65°C to +125°C  
Soldering process temperature:  
Standard insulator: 235°C  
Hi-Temp insulator: 260°C

### PACKAGING:

Anti-ESD plastic trays

### APPROVALS AND CERTIFICATIONS:

UL Recognized File No. E224053  
CSA Certified File No. LR1578596



### ORDERING INFORMATION

DB25

SN

24

#### SHELL SIZE/ POSITIONS

DE09 = 9 Positions  
DB25 = 25 Positions  
HD15 = High Density  
15 Positions

#### MOUNTING OPTIONS

24 = Forked Boardlocks  
for PCB Retention and  
#4-40 threaded inserts  
in mounting holes  
25 = Forked Boardlocks  
for PCB retention and  
#4-40 threaded inserts  
in mounting holes with  
installed jackscrews

#### CONTACT / TYPE

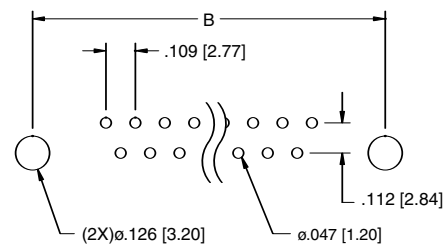
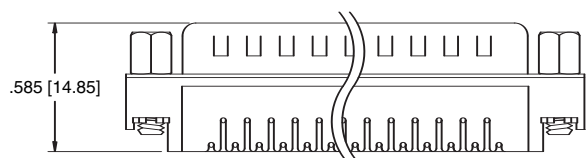
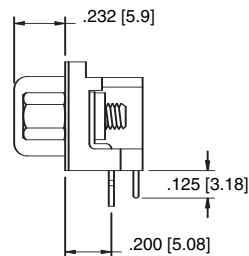
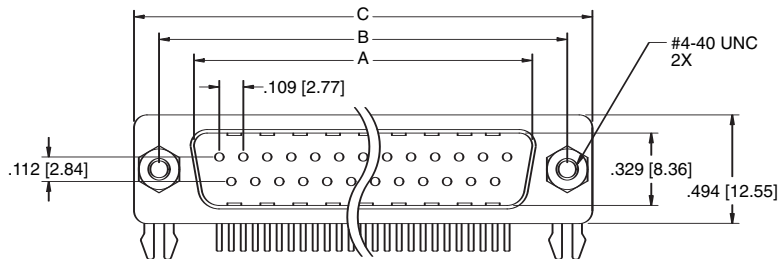
PN = Plug, .197" Slimline  
SN = Socket, .197" Slimline

### OPTIONS:

Add designator(s) to end of part number

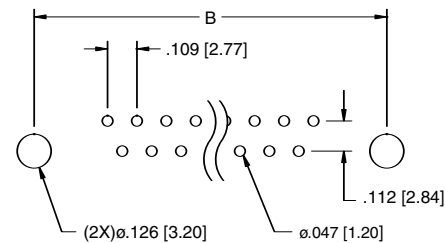
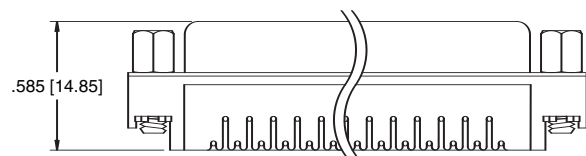
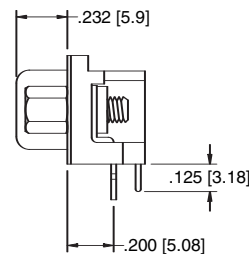
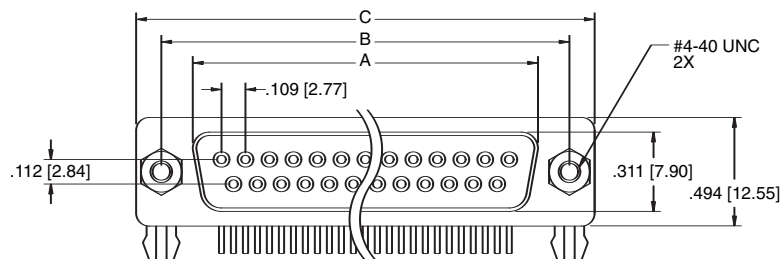
- 15 = 15  $\mu$ m gold plating in contact area
- 30 = 30  $\mu$ m gold plating in contact area
- LPJ = Loose packed jackscrews
- HT = Hi-Temp insulator for Hi-Temp soldering  
processes up to 260°C
- R = Round jackscrews installed

### PLUG



Recommended PCB Layout

### SOCKET



Recommended PCB Layout

Unit: Inch [mm]

Positions	PLUG	SOCKET	DIMENSIONS	
	A	A	B	C
9	.666 [16.92]	.643 [16.33]	.984 [24.99]	1.213 [30.81]
15	.994 [25.25]	.971 [24.66]	1.312 [33.32]	1.541 [39.14]
25	1.534 [38.96]	1.511 [38.38]	1.852 [47.04]	2.088 [53.04]