

#### INTRODUCTION:

Adam Tech Crimp and Poke D-Sub connectors are a popular interface for many I/O applications. Offered in 9, 15, 25, 37 and 50 positions they are a low cost alternative to soldering a connector to cable. Contacts are crimped onto discrete wires and pushed into the connector body. The connector is comprised of a metal shell and plastic insulator and is available with a variety of mating options. The contacts are precision stamped and are available in a variety of platings.

#### FEATURES:

- Low cost no solder alternative
- Industry standard compatibility
- Durable metal shell design
- Precision formed contacts
- Variety of Mating and mounting options

#### MATING CONNECTORS:

Adam Tech D-Subminiatures and all industry standard D-Subminiature connectors.

#### SPECIFICATIONS:

##### Material:

Insulator: PBT, 30% glass reinforced, rated UL94V-0  
Insulator Color: Black

Contacts: Phosphor Bronze  
Shell: Steel, Tin or Zinc plated  
Hardware: Brass, Nickel plated

##### Contact Plating:

Gold Flash (15 and 30 µin Optional) over Nickel underplate.

##### Electrical:

Operating voltage: 250V AC / DC max.  
Current rating: 5 Amps max.  
Contact resistance: 20 mΩ max. initial  
Insulation resistance: 5000 MΩ min.  
Dielectric withstanding voltage: 1000V AC for 1 minute

##### Mechanical:

Insertion force: 0.75 lbs max  
Extraction force: 0.44 lbs min

##### Temperature Rating:

Operating temperature: -65°C to +125°C

##### PACKAGING:

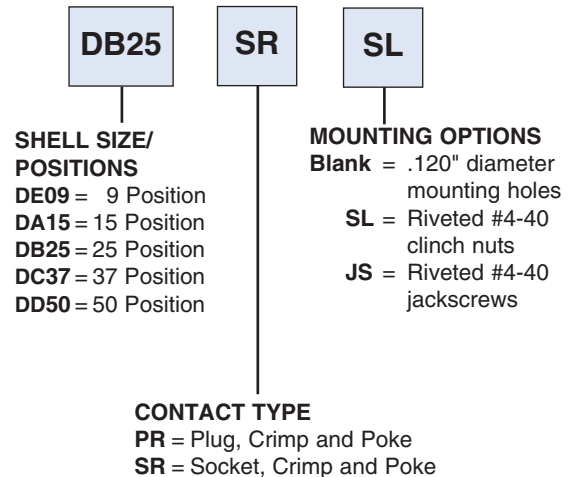
Anti-ESD plastic trays

##### APPROVALS AND CERTIFICATIONS:

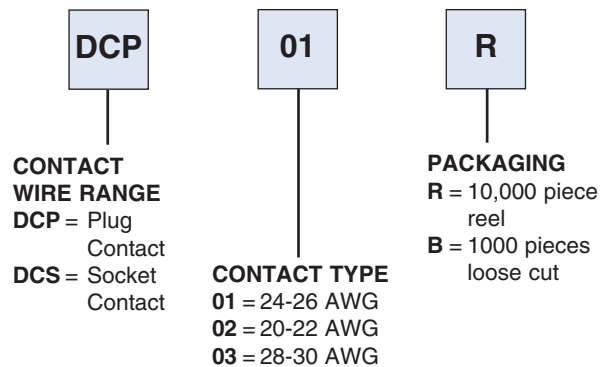
UL Recognized File No. E224053  
CSA Certified File No. LR1578596



#### ORDERING INFORMATION HOUSING



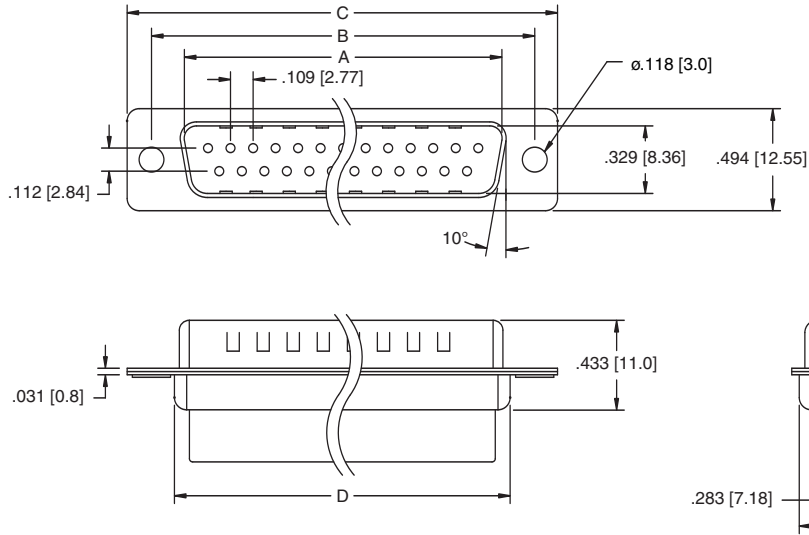
#### CONTACTS



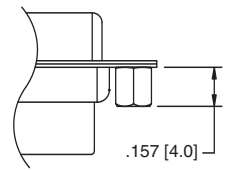
#### OPTIONS:

- Add designator(s) to end of part number
- 15 = 15 µin gold plating in contact area on crimp contacts
  - 30 = 30 µin gold plating in contact area on crimp contacts

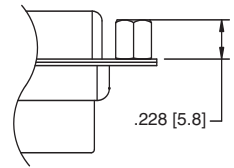
### PLUG HOUSING



### MOUNTING OPTIONS

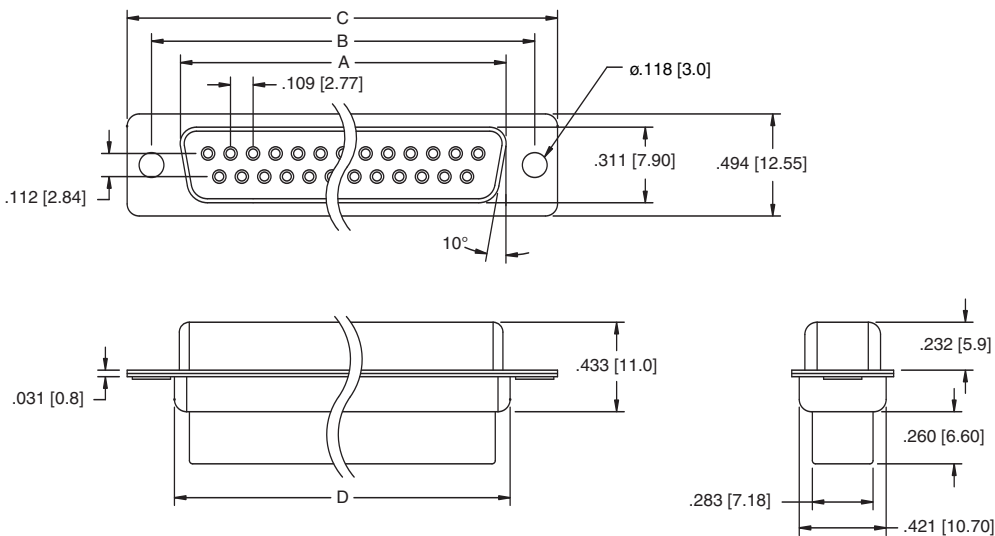


**SL Option**  
Bottom side riveted #4-40  
Clinch Nuts

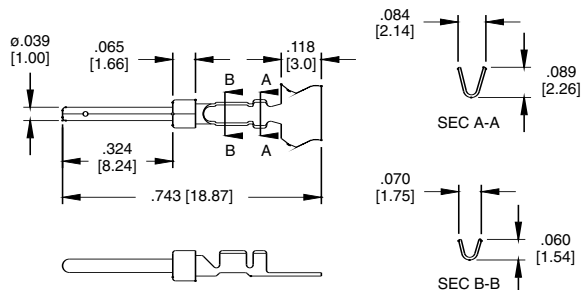


**JS Option**  
Top side riveted #4-40  
Jack Screws

### SOCKET HOUSING



### PLUG CRIMP CONTACTS



### SOCKET CRIMP CONTACTS

