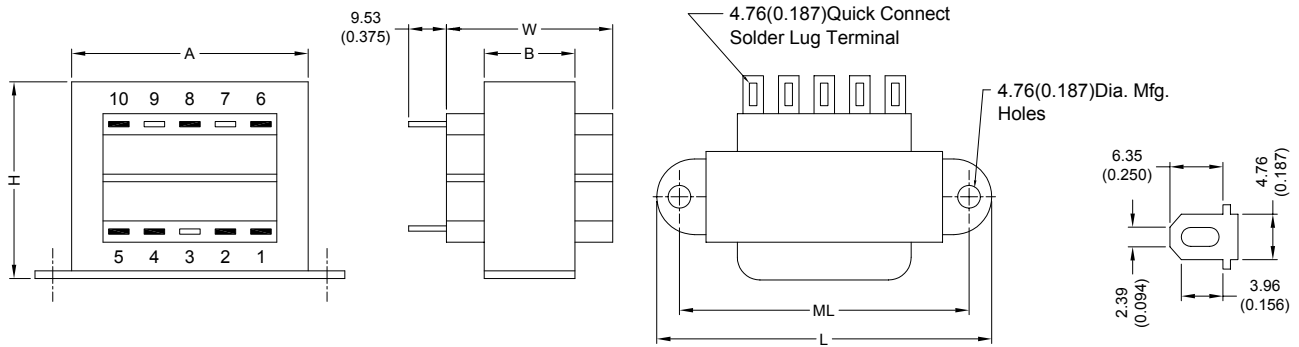


# POWER TRANSFORMER

## DCS8-20 (F) SERIES

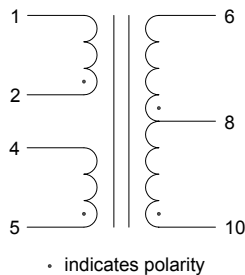
### 1. CONFIGURATION & DIMENSIONS :



UNIT : mm (inch)

SIZE	VA	L	W	H	A	B	ML	gram
8	100	102.40 (4.031)	57.15 (2.250)	65.10 (2.563)	77.80 (3.063)	33.35 (1.313)	90.50 (3.563)	1247.38

### 2. SCHEMATIC :



### 3. ELECTRICAL CHARACTERISTICS (@ 25°C) :

- |                                      |                              |
|--------------------------------------|------------------------------|
| a. Primary Voltage                   | AC 115/230 V 50/60 Hz .      |
| b. No Load Primary Current           | Less Than 85mA / 130mA .     |
| c. Secondary Voltage (±5%)           |                              |
| Pin 6-10 C.T. Pin 8                  | AC 22.50 V / 22.30 V .       |
| d. Secondary Load Current            | 5.00A .                      |
| e. Full Load Primary Current         | Less Than 1.10mA / 0.60mA .  |
| f. Full Load Secondary Voltage (±5%) | 20.00V / 20.00V .            |
| Pin 6-10 C.T. Pin 8                  |                              |
| g. DC Resistance                     |                              |
| Pin 1-2                              | Primary-1 = 7.93 Ohm .       |
| Pin 4-5                              | Primary-2 = 9.48 Ohm .       |
| Pin 6-8                              | Secondary-1 = 0.068 Ohm .    |
| Pin 8-10                             | Secondary-2 = 0.083 Ohm .    |
| h. Insulation Resistance             | DC 500V 100Meg Ohm Of More . |
| i. Withstand Voltage (Hi-Pot)        | AC 2500V 60Hz 1 Minutes .    |
| j. Temperature Rise                  | Less Than 60 Deg C .         |
| k. Core Size                         | EI-76 x 32.50 m/m .          |

#### l. Turns & Wire Gauge

Primary-1	Pin 1-2	40S	Turns Diameter	0.40 mm
Primary-2	Pin 4-5	40S	Turns Diameter	0.40 mm
	Pin 6-8-10	0-40-80	Turns Diameter	1.20 mm



**RoHS Compliant**

NOTE : Specifications subject to change without notice. Please check our website for latest information.

25.02.2008



**SUPERWORLD ELECTRONICS (S) PTE LTD**

PG. 1