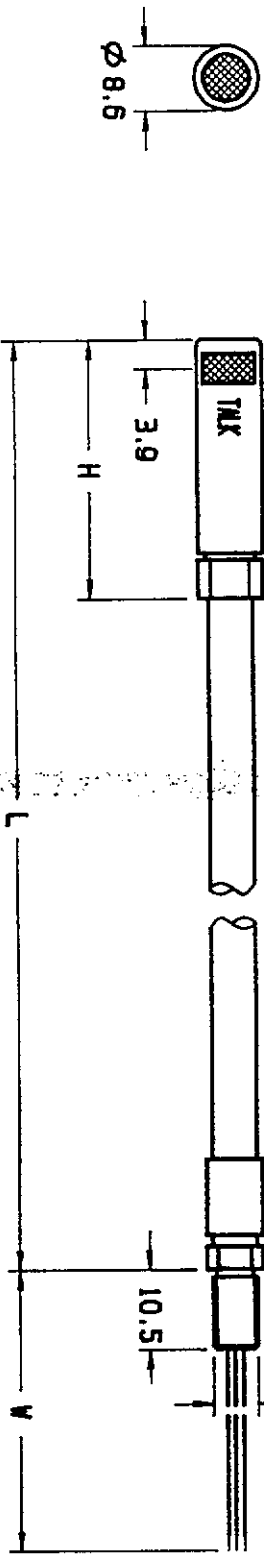
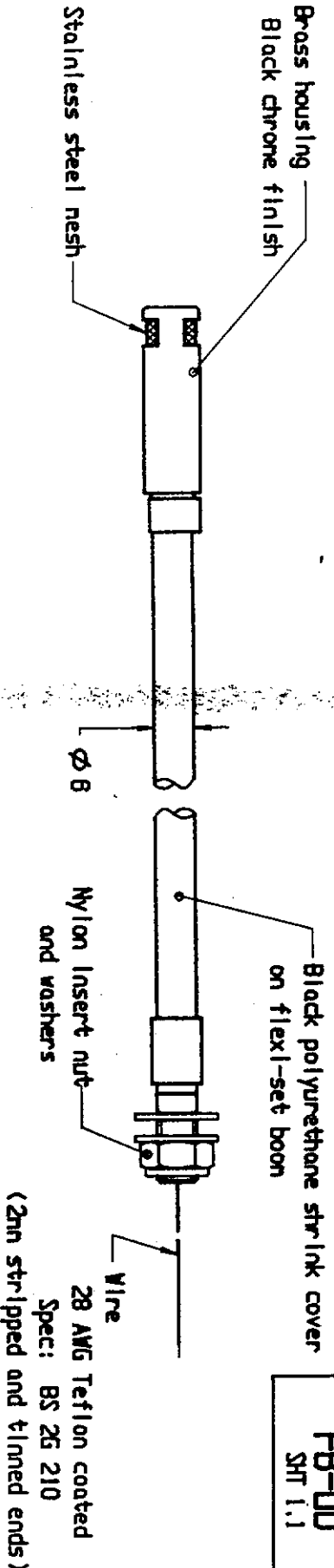


FB-00  
SHT 1.1



Model	Dimension			Wire colour			Weight grams
	L	H	V	+ve	output	-ve	
3225	164	19.7	150	Red	Red	Black	Green
3524	185	34.1	150	White	White	White	Green
3525	193	19.7	150	Red	Black	Black	Green
3529	150	19.7	150	Red	Black	Black	Green
3531	193	19.7	150	Red	Black	Black	Green

DIMENSIONS IN MILLIMETERS

# KNOWLES ELECTRONICS

KNOWLES ELECTRONICS, INC., ITASCA, ILLINOIS U.S.A.  
KNOWLES ELECTRONICS, CO., BURGESS HILL, SUSSEX, ENGLAND

SCALE: 1 : 1

DO NOT SCALE DRAWING

TITLE: Boon microphone

Drafting drawing

FB-00  
SHT 1.1

DR. BY DATE

DMP 1-Dec-94

CR. BY DATE

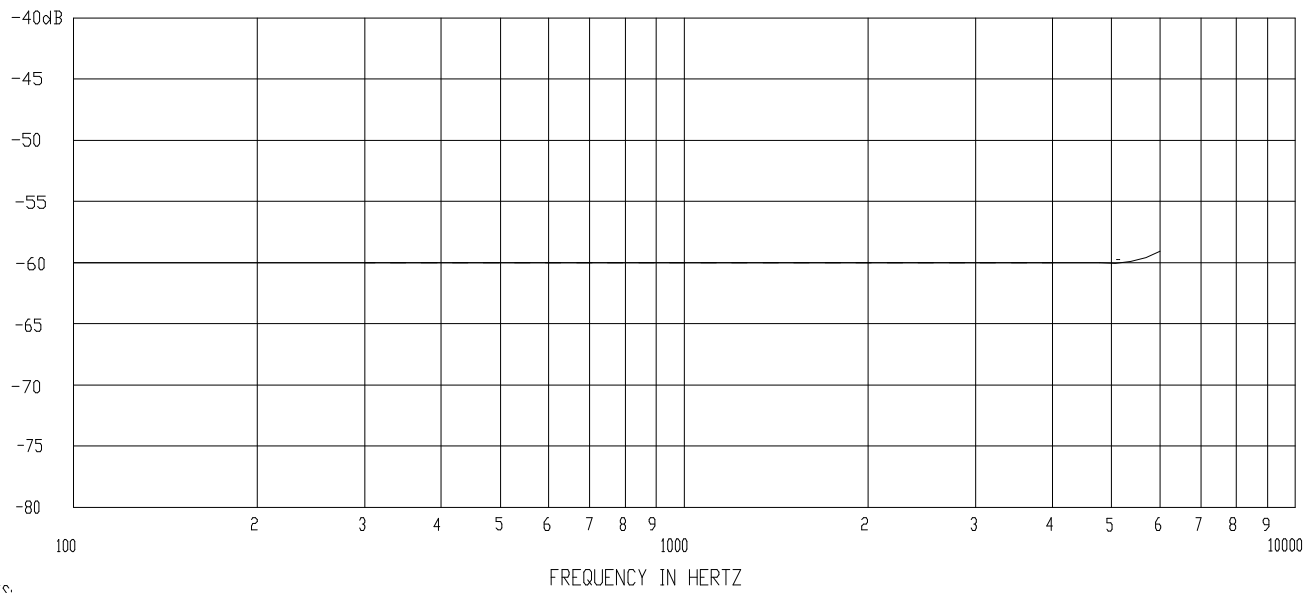
SPK 1.7.94

APP. BY DATE

R. J. 1.7.94

ISSUE  
B

SENSITIVITY IN dB RELATIVE TO 1.0 VOLT/0.1 Pa (N/M )<sup>2</sup>  
FOR CONDITIONS NOTED BELOW.



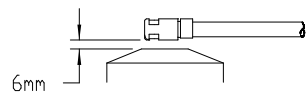
NOTES:

1. MICROPHONE TO BE FUNCTIONAL WITH 10 VDC SUPPLY.
2. SENSITIVITY VALUES INDICATED ON THIS SPECIFICATION ARE VALID AT 50% HUMIDITY.

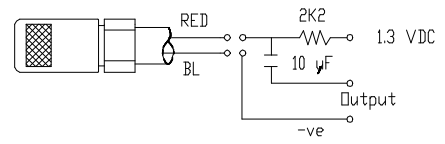
SENSITIVITY

<u>FREQUENCY</u>	<u>MIN.</u>	<u>NOM.</u>	<u>MAX.</u>
300	-64.0	-60.0	-56.0
1000	-63.0	-60.0	-57.0
4000	-64.0	-60.0	-56.0

4. TEST CONDITIONS:  
HEAD OF BOOM EXPOSED TO 94 dB SPL SWEPT SOUND FIELD AT 6mm FROM VOICE APERTURE.  
ARTIFICIAL VOICE:  
B & K 4227 MOUTH SIMULATOR.



5. FOR MICROPHONE CAPSULE SPEC. SEE DRG. NR-PC Sht 2.1



Lead identification  
& test circuit

Model No.  
FB-3225  
FB-3531  
FB-3533  
FB-3534  
FB-8515  
FB-5522

ISSUE

B

KNOWLES ELECTRONICS

KNOWLES ELECTRONICS, INC., ITASCA, ILLINOIS U.S.A.

KNOWLES ELECTRONICS, CO., BURGESS HILL, SUSSEX, ENGLAND

When test limits are used to establish incoming inspection acceptance/rejection criteria, correlation of test equipment with Knowles is also required for elimination of equipment and test method variations.

C

TITLE: BOOM MICROPHONE  
PERFORMANCE SPECIFICATION

FB-PC  
SHT 2.1

DR. BY	DATE
RW	2-Nov-95
CK. BY	DATE
SRK	1-Jul-96
APP. BY	DATE
RJW	1-Jul-96