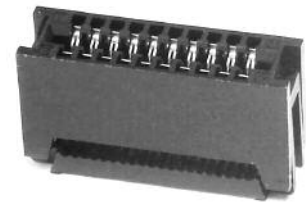
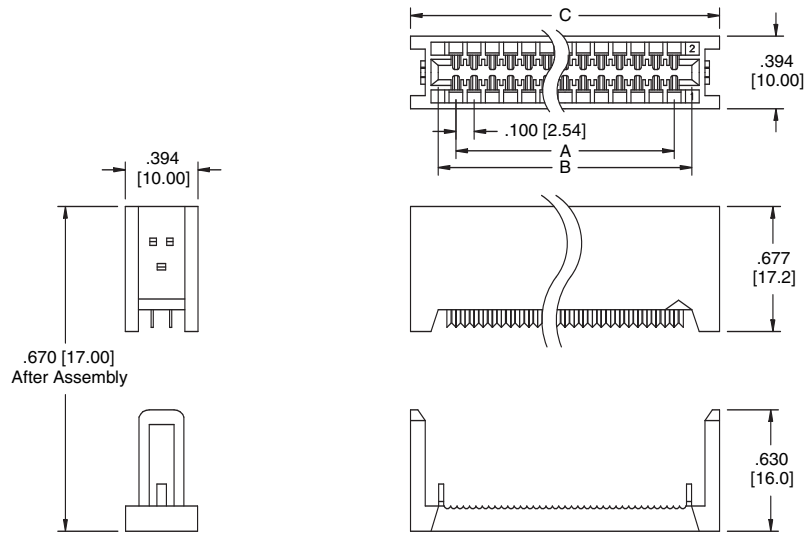
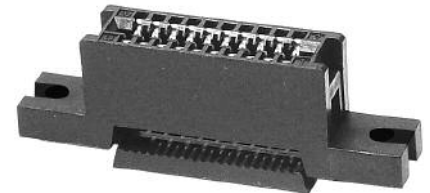
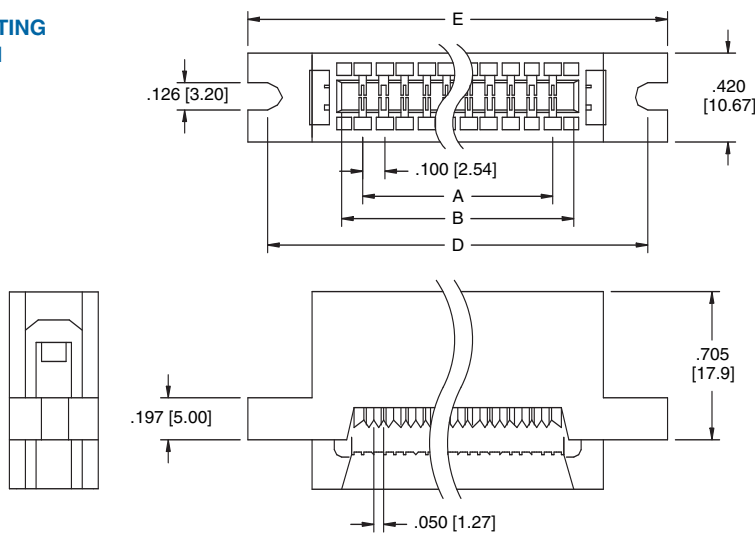


#### FCE



FCE-20-SG

#### FCE WITH MOUNTING EAR OPTION



FCE-20-SG-E

DIMENSIONS											
POSITIONS	10	14	16	20	26	34	40	50	60	62	64
A	.400 [10.16]	.600 [15.24]	.700 [17.78]	.900 [22.86]	1.200 [22.86]	1.600 [40.64]	1.900 [48.26]	2.400 [60.96]	2.900 [73.66]	3.000 [76.20]	3.100 [78.74]
B	.604 [15.34]	.804 [20.42]	.904 [22.96]	1.1040 [28.04]	1.404 [35.66]	1.804 [45.82]	2.104 [53.44]	2.604 [66.14]	3.104 [78.84]	3.204 [81.38]	3.304 [83.92]
C	.872 [22.15]	1.072 [27.23]	1.172 [29.77]	1.372 [34.85]	1.672 [42.47]	2.072 [52.63]	2.372 [60.25]	2.872 [72.95]	3.372 [85.65]	3.472 [88.19]	3.304 [90.73]
D	1.300 [33.02]	1.500 [38.10]	1.600 [40.64]	1.800 [45.72]	2.100 [53.34]	2.500 [63.50]	2.800 [71.12]	3.300 [83.82]	3.800 [96.52]	N / A	4.000 [101.60]
E	1.500 [38.10]	1.700 [43.18]	1.800 [45.72]	2.000 [50.80]	2.300 [58.42]	2.700 [68.58]	3.000 [76.20]	3.500 [88.90]	4.000 [101.60]	N / A	4.200 [106.68]