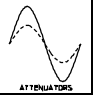


# FA Series

# FIXED COAXIAL ATTENUATORS

DC to 18 GHz / 3, 6, 10 & 20 dB / Meets MIL-E-16400 Class 1 & MIL-E-5400 Class 3 / BNC, SMA & N



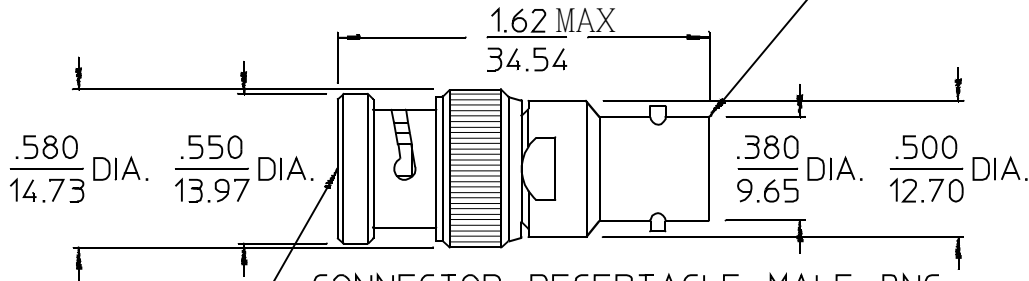
### PRINCIPAL SPECIFICATIONS

Model Number	Frequency Range, GHz	Attenuation & Accuracy, dB	Connector Type	VSWR, Max.	Performance Band, GHz	CW Power, W, Max.	Weight, oz. (g), Nom.
FAB-3-1.25K	DC - 2.5	3 ±0.3	BNC (m-f)	1.20:1	DC - 2.5	2	1 (28)
FAB-6-1.25K		6 ±0.3					
FAB-10-1.25K		10 ±0.3					
FAB-20-1.25K		20 ±0.3					
FAM-6-3K	DC - 12.4	3 ±0.3	SMA (m-f)	1.20:1	DC - 4.0	0.5	0.4 (11)
FAM-6-6K		6 ±0.3		1.30:1	4.0 - 12.4		
FAM-6-10K		10 ±0.5					
FAM-6-20K		20 ±0.5					
FAM-9-3K	DC - 18.0	3 ±0.3	SMA (m-f)	1.20:1	DC - 4.0	0.5	0.4 (11)
FAM-9-6K		6 ±0.3		1.30:1	4.0 - 12.4		
FAM-9-10K		10 ±0.5		1.35:1	12.4 - 18.0		
FAM-9-20K		20 ±1.0					
FAN-6-3K	DC - 12.4	3 ±0.3	N (m-f)	1.20:1	DC - 4.0	2	3.5 (98)
FAN-6-6K		6 ±0.3		1.30:1	4.0 - 10.0		
FAN-6-10K		10 ±0.5		1.35:1	10.0 - 12.4		
FAN-6-20K		20 ±0.5					

### FAB series

CONNECTOR, RECEPTACLE, FEMALE, BNC TYPE, MATES WITH CONNECTOR, PLUG MALE PER MIL-C-39012

NOTES:  
 1. Tolerance on 3 place decimals ±.020(.51) except as noted.  
 2. Dimensions in inches over millimeters.



CONNECTOR, RECEPTACLE, MALE, BNC TYPE, MATES WITH CONNECTOR, JACK FEMALE PER MIL-C-39012

05Mar96

# FA Series

# FIXED COAXIAL ATTENUATORS

DC to 18 GHz / 3, 6, 10 & 20 dB / Meets MIL-E-16400 Class 1 & MIL-E-5400 Class 3 / BNC, SMA & N

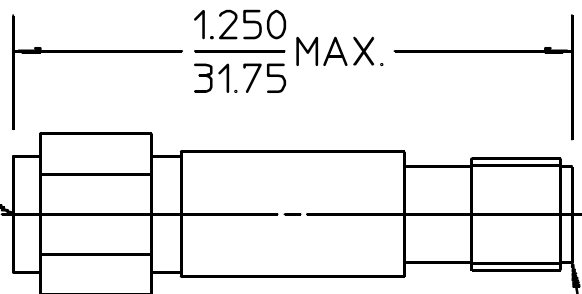
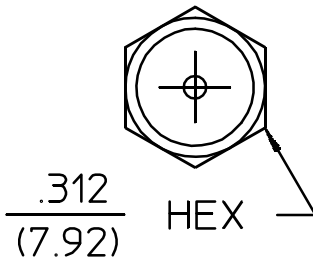


## GENERAL SPECIFICATIONS

Connectors: To meet interface requirements of MIL-C-39012  
Operating Temperature: -55° to +95°C

### FAM series

CONNECTOR, RECEPTACLE, MALE, SMA TYPE, MATES WITH CONNECTOR, JACK, FEMALE PER MIL-C-39012

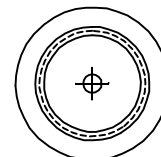
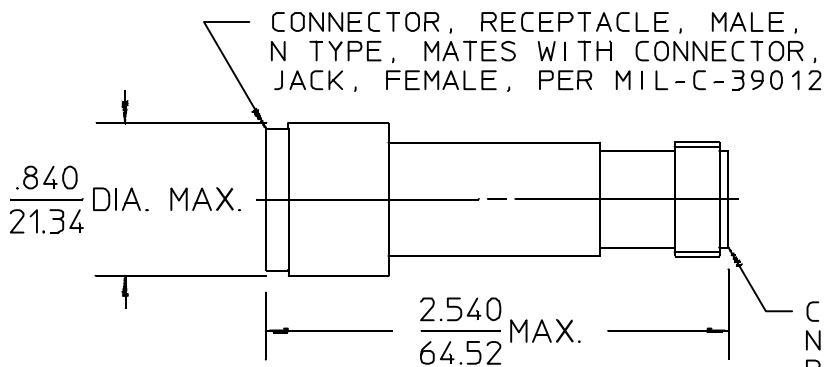


CONNECTOR, RECEPTACLE, FEMALE, SMA TYPE, MATES WITH CONNECTOR, PLUG, MALE PER MIL-C-39012

NOTES:  
1. Tolerance on 3 place decimals  $\pm .020(.51)$  except as noted.  
2. Dimensions in inches over millimeters.

### FAN series

NOTES:  
1. Tolerance on 3 place decimals  $\pm .020(.51)$  except as noted.  
2. Dimensions in inches over millimeters.



05Mar96