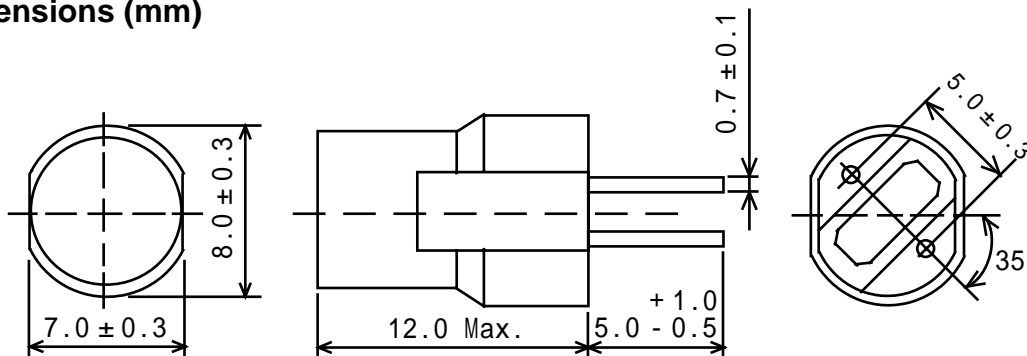


**Type: FB-875**
**Product Description**

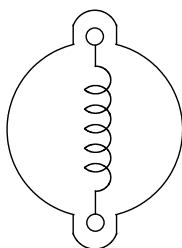
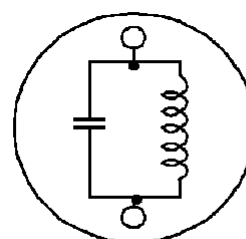
- 8.3mm Max (L × W), 12.0mm Max.height.
- Both used as power inductors and filters.
- Inductance range: 4.7 μ H ~ 100 μ H.
- Rated Current Range: 0.7A ~ 1.6A (as power inductor).
- Operating frequency:250kHz Max. (as filter).
- In addition to the reference versions of parameters shown here, custom designs are available to meet your exact requirements.

**Feature**

- Magnetically unshielded construction with one built-in capacitor.
- Ideally used in TV, Copy Machine, Mainboard of the compounding machines, etc as Power Supplies's Inductors or DC-DC Converter inductors.(as power inductor).
- Ideally used as Audio Filters(Trap)
- RoHS Compliance

**Dimensions (mm)**


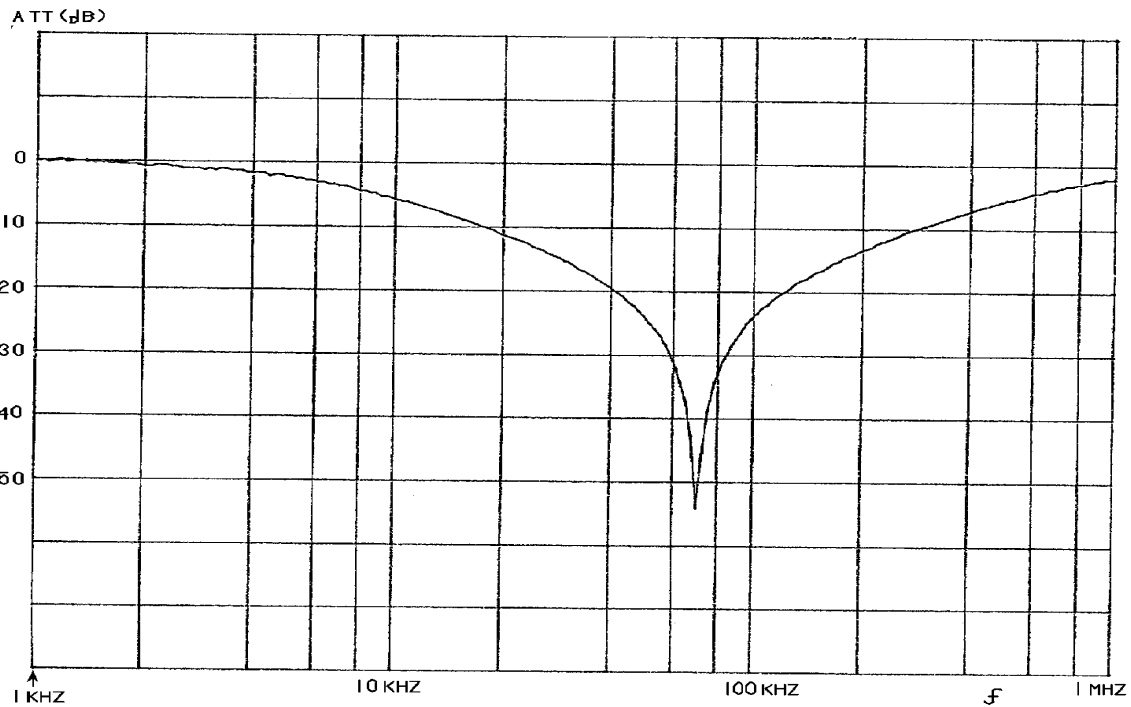
- \* Dimension does not include solder used on coil.
- \* Pin pitch should be measured at the root of terminal.

**Connection (Bottom View)**

**As power inductor**

**As filter**



**Type: FB-875**
**Specification(Used as filter,Part No.:S1160260)**

Item	Specification
Input impedance (Rin)	600Ω
Output impedance (Rout)	600Ω
Attenuation 70kHz	30dB Min.
Capacity (Int.)	150pF± 1 0% Within

**Frequency Response (Attenuation 1kHz=0dB)**

**Testing Circuit**
