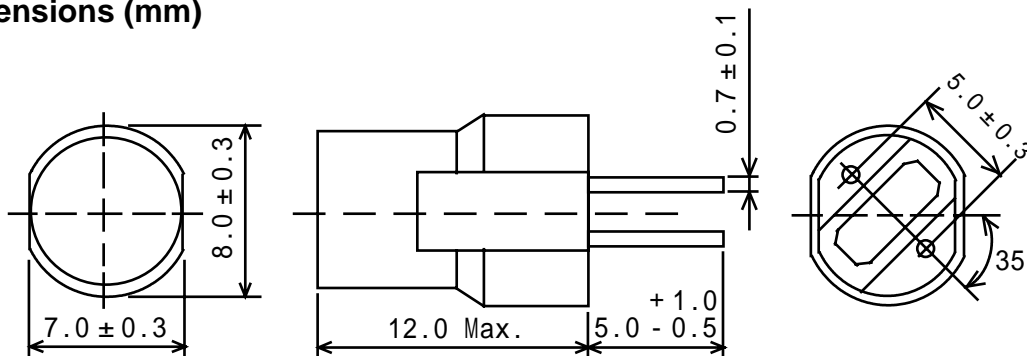


**Type: FB-875**
**Product Description**

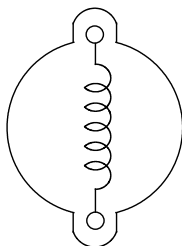
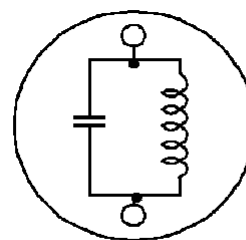
- 8.3mm Max (L × W), 12.0mm Max.height.
- Both used as power inductors and filters.
- Inductance range: 4.7 μ H ~ 100 μ H.
- Rated Current Range: 0.7A ~ 1.6A (as power inductor).
- Operating frequency:250kHz Max. (as filter).
- In addition to the reference versions of parameters shown here, custom designs are available to meet your exact requirements.

**Feature**

- Magnetically unshielded construction with one built-in capacitor.
- Ideally used in TV, Copy Machine, Mainboard of the compounding machines, etc as Power Supplies's Inductors or DC-DC Converter inductors.(as power inductor).
- Ideally used as Audio Filters(Trap)
- RoHS Compliance

**Dimensions (mm)**


- \* Dimension does not include solder used on coil.
- \* Pin pitch should be measured at the root of terminal.

**Connection (Bottom View)**

**As power inductor**

**As filter**

## Type: FB-875

## Specification(Used as inductors)

Part No.	Stamp	Inductance <Within> 1	D.C.R <Max.> ( ) (at 20 )	Saturation Current (A) 2	Temperature rise current (A) 3
FB875NP-4R7M	4R7M	4.7 $\mu$ H $\pm$ 20%	0.06	6.0	1.6
FB875NP-5R6M	5R6M	5.6 $\mu$ H $\pm$ 20%	0.07	5.5	1.6
FB875NP-6R8M	6R8M	6.8 $\mu$ H $\pm$ 20%	0.08	5.0	1.6
FB875NP-8R2M	8R2M	8.2 $\mu$ H $\pm$ 20%	0.09	4.5	1.6
FB875NP-1 $\emptyset$ 0M	100M	10 $\mu$ H $\pm$ 20%	0.10	4.0	1.6
FB875NP-12 $\emptyset$ M	120M	12 $\mu$ H $\pm$ 20%	0.11	3.6	1.6
FB875NP-15 $\emptyset$ M	150M	15 $\mu$ H $\pm$ 20%	0.12	3.1	1.6
FB875NP-18 $\emptyset$ M	180M	18 $\mu$ H $\pm$ 20%	0.13	3.0	1.6
FB875NP-22 $\emptyset$ M	220M	22 $\mu$ H $\pm$ 20%	0.14	2.7	1.4
FB875NP-27 $\emptyset$ M	270M	27 $\mu$ H $\pm$ 20%	0.15	2.4	1.0
FB875NP-33 $\emptyset$ M	330M	33 $\mu$ H $\pm$ 20%	0.17	2.2	1.0
FB875NP-39 $\emptyset$ M	390M	39 $\mu$ H $\pm$ 20%	0.19	2.0	1.0
FB875NP-47 $\emptyset$ K	470K	47 $\mu$ H $\pm$ 10%	0.21	1.9	1.0
FB875NP-56 $\emptyset$ K	560K	56 $\mu$ H $\pm$ 10%	0.24	1.7	1.0
FB875NP-68 $\emptyset$ K	680K	68 $\mu$ H $\pm$ 10%	0.33	1.5	0.8
FB875NP-82 $\emptyset$ K	820K	82 $\mu$ H $\pm$ 10%	0.36	1.4	0.8
FB875NP-1 $\emptyset$ 1K	101K	100 $\mu$ H $\pm$ 10%	0.54	1.1	0.7

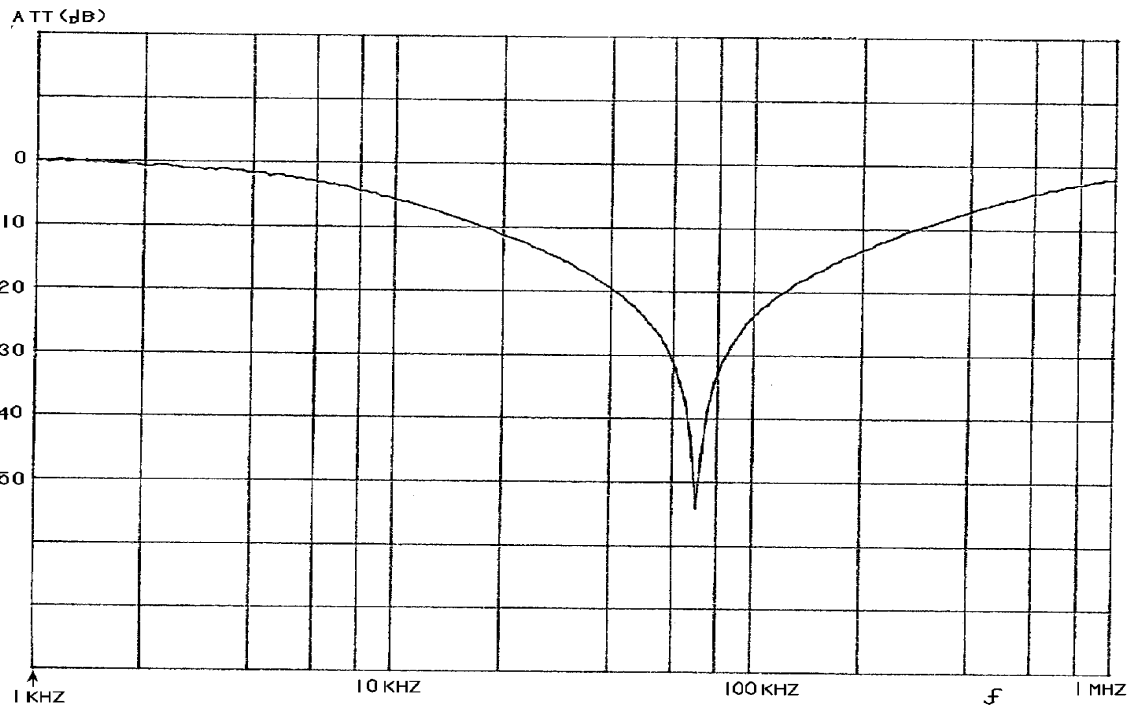
1: Measuring frequency(Inductance) : 4.7  $\mu$  H ~ 10  $\mu$  H、100  $\mu$  H at 7.96MHz  
 12  $\mu$  H ~ 82  $\mu$  H at 2.52MHz

2: Saturation current: The DC current at which the inductance decreases to 90% of it's initial value.

3: Temperature rise current: The DC current at which the temperature rise is  $t = 20$  .( $T_a = 20$  ).

**Type: FB-875**
**Specification(Used as filter,Part No.:S1160260)**

Item	Specification
Input impedance (Rin)	600Ω
Output impedance (Rout)	600Ω
Attenuation 70kHz	30dB Min.
Capacity (Int.)	150pF± 1 0% Within

**Frequency Response (Attenuation 1kHz=0dB)**

**Testing Circuit**
