

# FC

For equipment using S.M.P.S.

RFI Power Line Filters

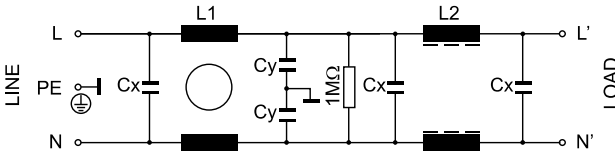
**For equipment using s.m.p.s.**  
 Chassis mounting double stage filter.  
 High symmetrical attenuation.  
 Switching mode power supplies.

## General Specifications

Maximum operating voltage: 250Vac.  
 Operating frequency: DC - 60Hz.  
 Hipot test voltage:  
 L/N->PE: 1800Vac 2s.  
 L->N: 1700 Vdc 2s.  
 Application class:  
 HPF Acc. TO DIN 40040  
 (-25°C/+85°C/95% RH, 30d).  
 Flammability class: UL 94 V2.



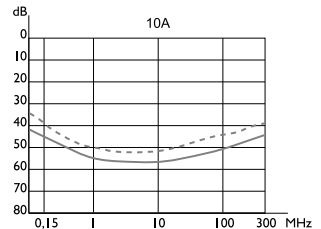
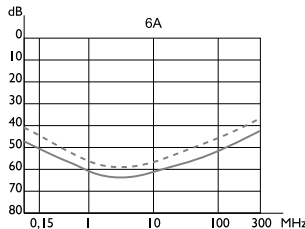
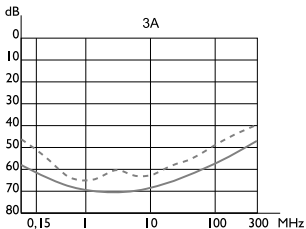
## Electrical schematics



## Product List

TYPE	I	L1	L2	CX	C Y	HOUSING	L.CURRENT	CONNECTION	WEIGHT ±g
FC-3X	3 Amp	3 mH	0,3 mH	100 nF	4,7 nF	215	0,45mA	AWG18 WIRE	170
FC-3Z						214		FASTON 6,3mm	164
FC-6X	6 Amp	1 mH	0,15 mH	100 nF	4,7 nF	217	0,45mA	AWG18 WIRE	205
FC-6Z						216		FASTON 6,3mm	199
FC-10X	10 Amp	0,5 mH	0,05 mH	100 nF	4,7 nF	217	0,45mA	AWG18 WIRE	249
FC-10Z						216		FASTON 6,3mm	242

## Insertion Loss



----- ASYM  
 ——— SYM