



APPLICATIONS

Wireless Network
Telecom/Datacom
Industry Control System
Measurement Equipment
Semiconductor Equipment

FEATURES

- 20 WATTS OUTPUT POWER
- OUTPUT CURRENT UP TO 4A
- STANDARD 2" X 1.6" X 0.4" PACKAGE
- HIGH EFFICIENCY UP TO 87%
- 2:1 AND 4:1 WIDE INPUT VOLTAGE RANGE
- SIX-SIDED CONTINUOUS SHIELD
- FIXED SWITCHING FREQUENCY
- CE MARK MEETS 2006/95/EC, 93/68/EEC AND 2004/108/EC
- UL60950-1, EN60950-1 AND IEC60950-1 LICENSED
- ISO9001 CERTIFIED MANUFACTURING FACILITIES
- COMPLIANT TO RoHS EU DIRECTIVE 2002/95/EC

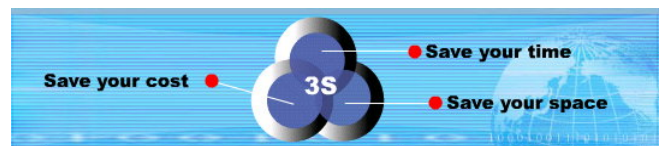
DESCRIPTION

The FDC20 and FDC20-W series offer 20 Watts of output power from a 2 x 1.6 x 0.4 inch package. The FDC20 series with 2:1 wide input voltage of 9-18, 18-36 and 36-75VDC. The FDC20-W series with 4:1 wide input voltage of 9-36 and 18-75VDC.

TECHNICAL SPECIFICATION All specifications are typical at nominal input, full load and 25°C otherwise noted

OUTPUT SPECIFICATIONS			
Output power			20 Watts, max.
Voltage accuracy	Full load and nominal Vin	Single & Dual	± 1%
		Triple 3.3V/5V	± 1%
		Auxiliary	± 5%
Minimum load (Note 6)			See Table
Voltage adjustability			± 10%
Line regulation	LL to HL at Full Load	Single (W)	± 0.2%
		Dual (W)	± 0.5%
		Triple 3.3V/5V	± 1%
		Auxiliary	± 5%
Load regulation	Min. Load to Full Load	Single	± 0.5%
		Dual	± 3%
		Triple 3.3V/5V	± 2%
		Auxiliary	± 5%
Cross regulation (Note 7)		Dual	± 5%
		Triple 3.3V/5V	± 2%
		Auxiliary	± 5%
Ripple and noise	20MHz bandwidth		See table
Temperature coefficient			±0.02% / °C, max.
Transient response recovery time	25% load step change	Single	250µS
		Dual	250µS
		Triple	500µS
Over voltage protection	3.3V output		3.9VDC
	5V output		6.2VDC
Zener diode clamp	12V output		15VDC
	15V output		18VDC
Over load protection	% of FL at nominal input		150%, max.
Short circuit protection			Hiccup, automatics recovery
GENERAL SPECIFICATIONS			
Efficiency			See table
Isolation voltage			1600VDC, min.
Isolation resistance			10 ⁹ ohms, min.
Isolation capacitance			300pF, max.
Switching frequency			300KHz, typ.
Approvals and standard			IEC60950-1, UL60950-1, EN60950-1
Case material			Nickel-coated copper
Base material			Non-conductive black plastic
Potting material			Epoxy (UL94-V0)
Dimensions			2.00 X 1.60 X 0.40 Inch
			(50.8 X 40.6 X 10.2 mm)
Weight			48g (1.69oz)
MTBF (Note 1)	BELLCORE TR-NWT-000332		1.928 x 10 ⁶ hrs
	MIL-HDBK-217F		7.650 x 10 ⁵ hrs

INPUT SPECIFICATIONS			
Input voltage range	FDC20	12V nominal input	9 – 18VDC
		24V nominal input	18 – 36VDC
		48V nominal input	36 – 75VDC
	FDC20-W	24V nominal input	9 – 36VDC
		48V nominal input	18 – 75VDC
Input filter			Pi type
Input surge voltage	12V input		36VDC
	24V input		50VDC
	100mS max	48V input	100VDC
Input reflected ripple current	Nominal Vin and full load		25mA _{p-p}
Start up time	Nominal Vin and constant resistive load	Power up	20mS, typ.
Remote ON/OFF (Note 8)			
(Positive logic)	DC-DC ON		Open or 3.5V < Vr < 12V
	DC-DC OFF		Short or 0V < Vr < 1.2V
Input current of remote control pin	Nominal Vin		-0.5~1.0mA
Remote off state input current	Nominal Vin		20mA
ENVIRONMENTAL SPECIFICATIONS			
Operating ambient temperature			-40°C ~ +85°C (with derating)
Maximum case temperature			+100°C
Storage temperature range			-55°C ~ +105°C
Thermal impedance (Note 9)	Nature convection		10°C/watt
	Nature convection with heat-sink		8.24°C/watt
Thermal shock			MIL-STD-810F
Vibration			MIL-STD-810F
Relative humidity			5% to 95% RH
EMC CHARACTERISTICS			
EMI (Note 10)	EN55022		Class A
ESD	EN61000-4-2	Air	± 8KV
		Contact	± 6KV
Radiated immunity	EN61000-4-3	10 V/m	Perf. Criteria A
Fast transient (Note 11)	EN61000-4-4	± 2KV	Perf. Criteria B
Surge (Note 11)	EN61000-4-5	± 1KV	Perf. Criteria B
Conducted immunity	EN61000-4-6	10 V _{r.m.s}	Perf. Criteria A



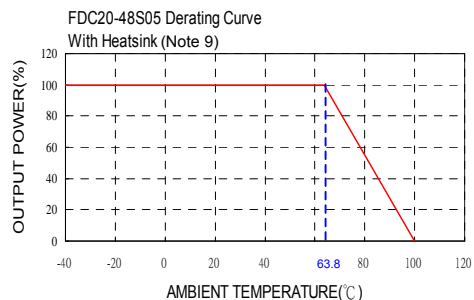
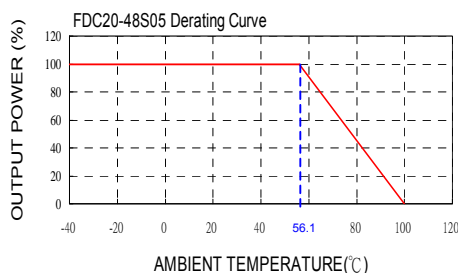


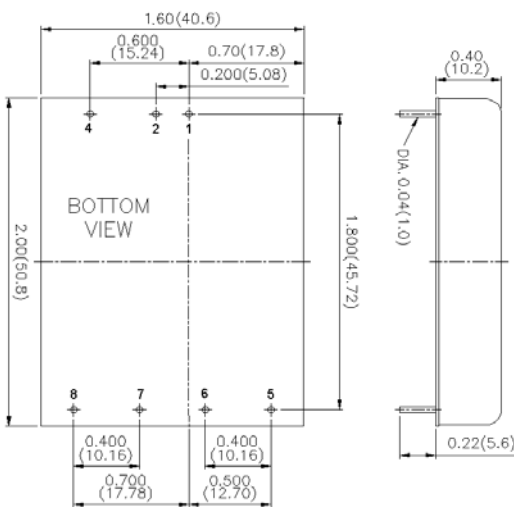
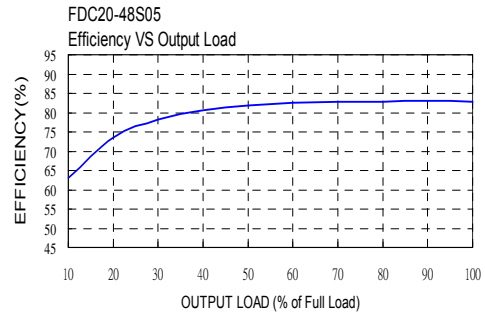
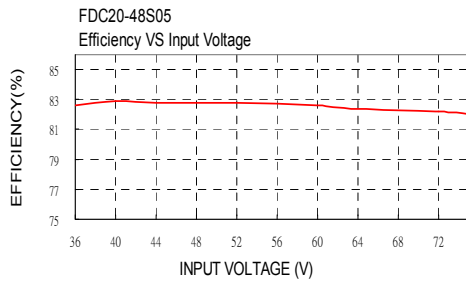
Model Number	Input Range	Output Voltage	Output Current		Output ⁽⁴⁾ Ripple & Noise	Input Current		Eff ⁽⁴⁾ (%)	Capacitor ⁽⁵⁾ Load max
			Min. load	Full load		No load ⁽³⁾	Full load ⁽²⁾		
FDC20-12S33	9 – 18 VDC	3.3 VDC	280mA	4000mA	75mVp-p	40mA	1507mA	77	13000µF
FDC20-12S05	9 – 18 VDC	5 VDC	280mA	4000mA	75mVp-p	15mA	2193mA	80	6800µF
FDC20-12S12	9 – 18 VDC	12 VDC	134mA	1670mA	75mVp-p	40mA	2110mA	83	2200µF
FDC20-12S15	9 – 18 VDC	15 VDC	106mA	1330mA	75mVp-p	20mA	2083mA	84	755µF
FDC20-12D05	9 – 18 VDC	± 5 VDC	± 140mA	± 2000mA	100mVp-p	15mA	2136mA	82	± 3400µF
FDC20-12D12	9 – 18 VDC	± 12 VDC	± 67mA	± 833mA	100mVp-p	35mA	2110mA	83	± 680µF
FDC20-12D15	9 – 18 VDC	± 15 VDC	± 53mA	± 666mA	100mVp-p	35mA	2110mA	83	± 450µF
FDC20-12T3312	9 – 18 VDC	3.3 / ± 12 VDC	300 / ± 30mA	3000 / ± 300mA	50 / ± 120mVp-p	20mA	1900mA	79	4700 / ± 220µF
FDC20-12T3315	9 – 18 VDC	3.3 / ± 15 VDC	300 / ± 25mA	3000 / ± 250mA	50 / ± 150mVp-p	35mA	1933mA	79	4700 / ± 220µF
FDC20-12T0512	9 – 18 VDC	5 / ± 12 VDC	200 / ± 30mA	2000 / ± 300mA	50 / ± 120mVp-p	20mA	1885mA	80	4700 / ± 220µF
FDC20-12T0515	9 – 18 VDC	5 / ± 15 VDC	200 / ± 25mA	2000 / ± 250mA	50 / ± 150mVp-p	40mA	1919mA	80	4700 / ± 220µF
FDC20-24S33 (W)	18 – 36 (9 – 36) VDC	3.3 VDC	280mA	4000mA	75mVp-p	10(20)mA	733 (764mA)	79 (76)	13000µF
FDC20-24S05 (W)	18 – 36 (9 – 36) VDC	5 VDC	280mA	4000mA	75mVp-p	10(10)mA	1082 (1111mA)	81 (79)	6800µF
FDC20-24S12 (W)	18 – 36 (9 – 36) VDC	12 VDC	134mA	1670mA	75mVp-p	10(20)mA	1018 (1082mA)	86 (81)	2200µF
FDC20-24S15 (W)	18 – 36 (9 – 36) VDC	15 VDC	106mA	1330mA	75mVp-p	15(20)mA	1018 (1082mA)	86 (81)	755µF
FDC20-24D05 (W)	18 – 36 (9 – 36) VDC	± 5 VDC	± 140mA	± 2000mA	100mVp-p	20(15)mA	1028 (1111mA)	85 (79)	± 3400µF
FDC20-24D12 (W)	18 – 36 (9 – 36) VDC	± 12 VDC	± 67mA	± 833mA	100mVp-p	25(20)mA	1016 (1068mA)	86 (82)	± 680µF
FDC20-24D15 (W)	18 – 36 (9 – 36) VDC	± 15 VDC	± 53mA	± 666mA	100mVp-p	30(25)mA	1015 (1068mA)	86 (82)	± 450µF
FDC20-24T3312	18 – 36 VDC	3.3 / ± 12 VDC	300 / ± 30mA	3000 / ± 300mA	50 / ± 120mVp-p	20mA	914mA	82	4700 / ± 220µF
FDC20-24T3315	18 – 36 VDC	3.3 / ± 15 VDC	300 / ± 25mA	3000 / ± 250mA	50 / ± 150mVp-p	20mA	967mA	79	4700 / ± 220µF
FDC20-24T0512	18 – 36 VDC	5 / ± 12 VDC	200 / ± 30mA	2000 / ± 300mA	50 / ± 120mVp-p	25mA	907mA	83	4700 / ± 220µF
FDC20-24T0515	18 – 36 VDC	5 / ± 15 VDC	200 / ± 25mA	2000 / ± 250mA	50 / ± 150mVp-p	10mA	922mA	83	4700 / ± 220µF
FDC20-48S33 (W)	36 – 75 (18 – 75) VDC	3.3 VDC	280mA	4000mA	75mVp-p	10(15)mA	367 (377mA)	79 (77)	13000µF
FDC20-48S05 (W)	36 – 75 (18 – 75) VDC	5 VDC	280mA	4000mA	75mVp-p	10(10)mA	543 (548mA)	82 (80)	6800µF
FDC20-48S12 (W)	36 – 75 (18 – 75) VDC	12 VDC	134mA	1670mA	75mVp-p	15(10)mA	509 (536mA)	86 (82)	2200µF
FDC20-48S15 (W)	36 – 75 (18 – 75) VDC	15 VDC	106mA	1330mA	75mVp-p	25(10)mA	506 (532mA)	86 (82)	755µF
FDC20-48D05 (W)	36 – 75 (18 – 75) VDC	± 5 VDC	± 140mA	± 2000mA	100mVp-p	15(10)mA	514 (541mA)	85 (81)	± 3400µF
FDC20-48D12 (W)	36 – 75 (18 – 75) VDC	± 12 VDC	± 67mA	± 833mA	100mVp-p	15(15)mA	502 (527mA)	87 (83)	± 680µF
FDC20-48D15 (W)	36 – 75 (18 – 75) VDC	± 15 VDC	± 53mA	± 666mA	100mVp-p	20(20)mA	502 (527mA)	87 (83)	± 450µF
FDC20-48T3312	36 – 75 VDC	3.3 / ± 12 VDC	300 / ± 30mA	3000 / ± 300mA	50 / ± 120mVp-p	10mA	457mA	82	4700 / ± 220µF
FDC20-48T3315	36 – 75 VDC	3.3 / ± 15 VDC	300 / ± 25mA	3000 / ± 250mA	50 / ± 150mVp-p	10mA	464mA	82	4700 / ± 220µF
FDC20-48T0512	36 – 75 VDC	5 / ± 12 VDC	200 / ± 30mA	2000 / ± 300mA	50 / ± 120mVp-p	15mA	448mA	84	4700 / ± 220µF
FDC20-48T0515	36 – 75 VDC	5 / ± 15 VDC	200 / ± 25mA	2000 / ± 250mA	50 / ± 150mVp-p	15mA	456mA	84	4700 / ± 220µF

⁽¹²⁾FDC20-24D3305 and FDC20-48D3305, Output 3.3V(3A)/5V(2A), Detail Spec. Contact Factory.

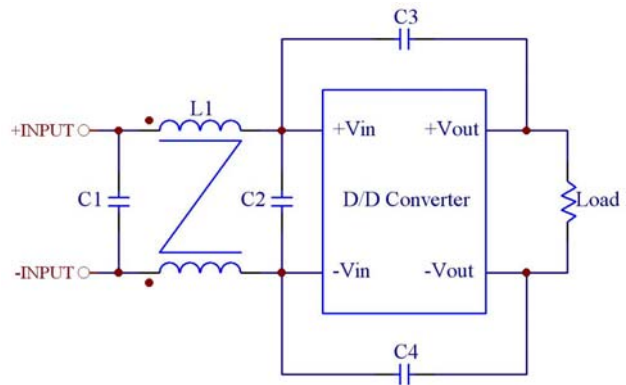
Note

- BELLCORE TR-NWT-000332. Case 1: 50% Stress, Temperature at 40°C. MIL-HDBK-217F Notice2 @Ta=25 °C, Full load(Ground, Benign, controlled environment).
- Maximum value at nominal input voltage and full load.
- Typical value at nominal input voltage and no load.
- Typical value at nominal input voltage and full load.
- Test by minimum Vin and constant resistive load.
- The output requires a minimum loading on the output to maintain specified regulation. Operation under no-load condition will not damage these devices, however they may not meet all listed specification.
- Cross regulation : Dual output—Asymmetrical load 25% to 100% full load
Triple output – 3.3V / 5V 100% load and one of auxiliary 100% load, other auxiliary load change from 25% to 100% load
- The ON/OFF control pin voltage is referenced to -Vin
- Heat sink is optional and P/N: 7G-0011C-F and the operation temperature range please see curve.
- The FDC20 series can meet EN55022 Class A with parallel an external capacitor to the input pins.
Recommend: 12Vin : 6.8µF/50V 1812 MLCC . 24Vin : N/A. 48Vin : 2.2µF/100V 1812 MLCC .
- An external input filter capacitor is required if the module has to meet EN61000-4-4, EN61000-4-5.
The filter capacitor Power Mate suggest: Nippon chemi-con KY series, 220 µF/100V, ESR 48mΩ .
- The FDC20-24D3305 and FDC20-48D3305 are safety approval pending.





- All dimensions in Inches (mm)
Tolerance: X.XX±0.02 (X.X±0.5)
X.XXX±0.01 (X.XX±0.25)
- Pin pitch tolerance ±0.01(0.25)
- Pin dimension tolerance ±0.004 (0.1)

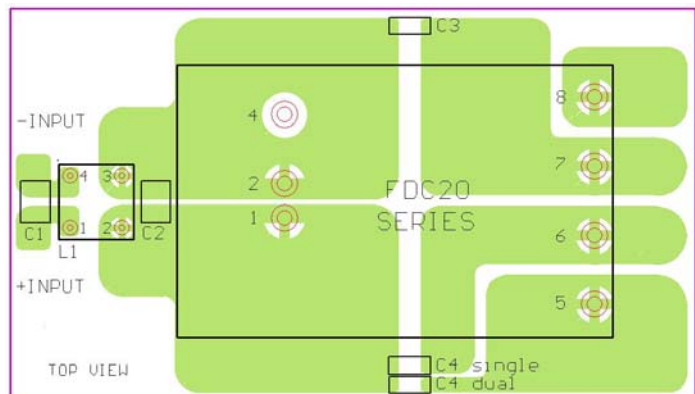
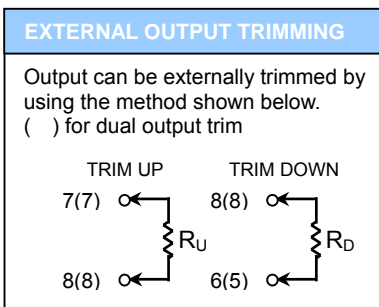


Recommended Filter for EN55022 Class B Compliance

The components used in the above figure, together with the manufacturers' part numbers for these components, are as follows:

	C1	C2	C3	C4	L1
FDC20-12xxx	4.7µF/50V 1812 MLCC	N/A	1000pF/2KV MLCC	1000pF/2KV MLCC	450µH Common Choke PMT-048
FDC20-24xxx	4.7µF/50V 1812 MLCC	N/A	1000pF/2KV MLCC	1000pF/2KV MLCC	450µH Common Choke PMT-048
FDC20-48xxx	2.2µF/100V 1812 MLCC	2.2µF/100V 1812 MLCC	1000pF/2KV MLCC	1000pF/2KV MLCC	450µH Common Choke PMT-048

PIN CONNECTION			
PIN	SINGLE	DUAL	TRIPLE
1	+ INPUT	+ INPUT	+ INPUT
2	- INPUT	- INPUT	- INPUT
4	CTRL	CTRL	CTRL
5	NO PIN	+ OUTPUT	+ AUXILIARY
6	+ OUTPUT	COMMON	+3.3V / +5V
7	- OUTPUT	- OUTPUT	COMMON
8	TRIM	TRIM	- AUXILIARY



Recommended EN55022 Class B Filter Circuit Layout