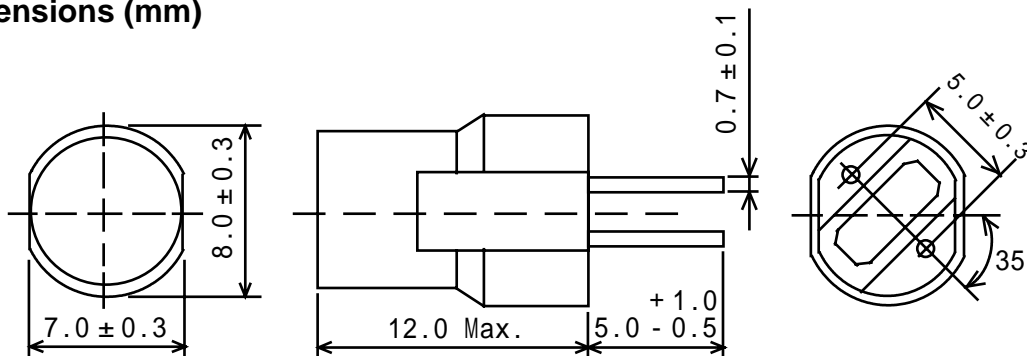


Type: FB-875
Product Description

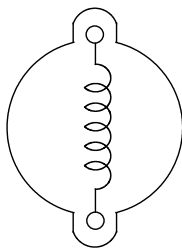
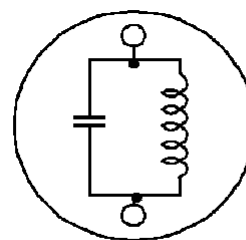
- 8.3mm Max (L × W), 12.0mm Max.height.
- Both used as power inductors and filters.
- Inductance range: 4.7 μ H ~ 100 μ H.
- Rated Current Range: 0.7A ~ 1.6A (as power inductor).
- Operating frequency:250kHz Max. (as filter).
- In addition to the reference versions of parameters shown here, custom designs are available to meet your exact requirements.

Feature

- Magnetically unshielded construction with one built-in capacitor.
- Ideally used in TV, Copy Machine, Mainboard of the compounding machines, etc as Power Supplies's Inductors or DC-DC Converter inductors.(as power inductor).
- Ideally used as Audio Filters(Trap)
- RoHS Compliance

Dimensions (mm)


- * Dimension does not include solder used on coil.
- * Pin pitch should be measured at the root of terminal.

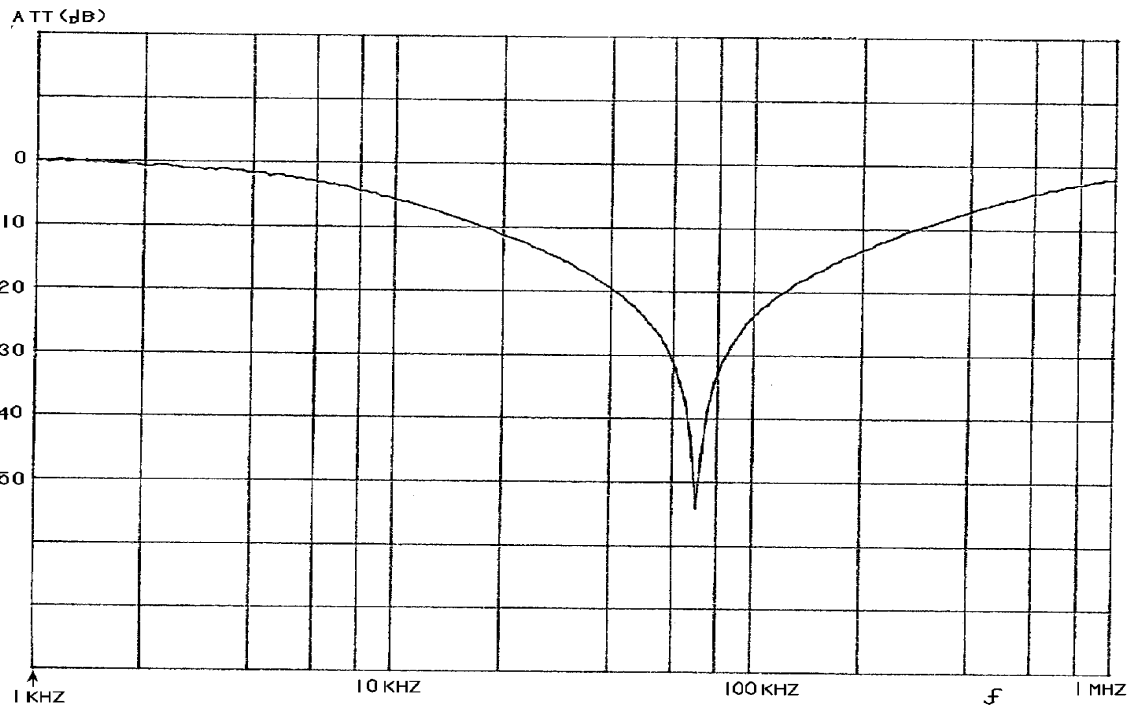
Connection (Bottom View)

As power inductor

As filter

Type: FB-875

Specification(Used as filter,Part No.:S1160260)

Item	Specification
Input impedance (Rin)	600Ω
Output impedance (Rout)	600Ω
Attenuation 70kHz	30dB Min.
Capacity (Int.)	150pF± 1 0% Within

Frequency Response (Attenuation 1kHz=0dB)



Testing Circuit

