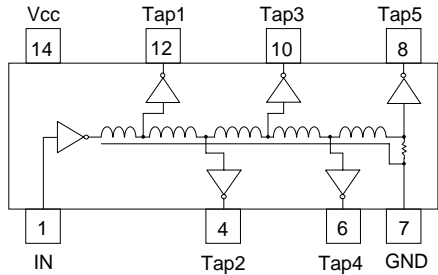
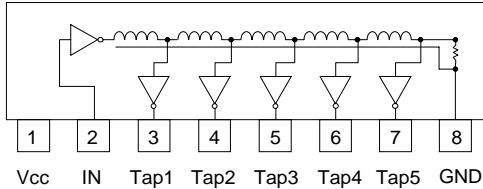


# FAIDM / FSIDM Series FAST / TTL Buffered 5-Tap Delay Modules

FAIDM 14-Pin Schematic



FSIDM 8-Pin SIP Schematic



## P/N Description

Logic 5 Tap Delay  
Molded Package Series:  
14-pin DIP: FAIDM  
8-pin SIP: FSIDM  
Total Delay in nanoseconds (ns)  
Lead Style: Blank = Thru-hole  
G = "Gull Wing" SMD (FAIDM Only)

**FXIDM - XXX X**

Examples: FAIDM-25G = 25ns (5ns per tap)  
74F, 14-Pin G-SMD  
FAIDM-100 = 100ns (20ns per tap)  
74F, 14-Pin DIP  
FSIDM-50 = 50ns (10ns per tap)  
74F, 8-Pin SIP

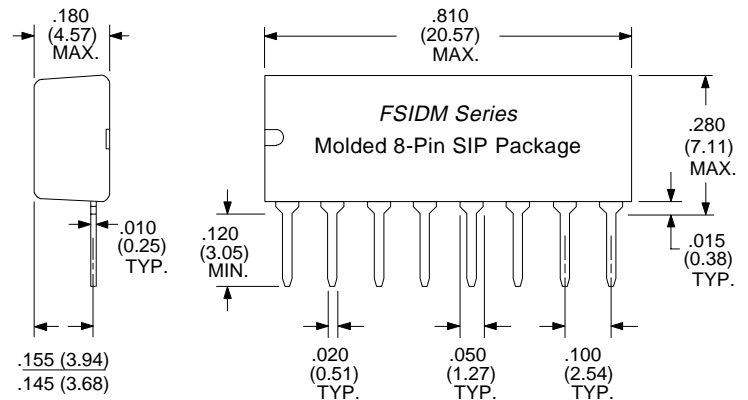
## OPERATING SPECIFICATIONS

$V_{CC}$  Supply Voltage ..... 5.00 ± 0.25 VDC  
 $I_{CC}$  Supply Current ..... 48 mA Maximum  
Logic "1" Input:  $V_{IH}$  ..... 2.00 V min., 5.50 V max.  
 $I_{IH}$  ..... 20  $\mu$ A max. @ 2.70V  
Logic "0" Input:  $V_{IL}$  ..... 0.80 V max.  
 $I_{IL}$  ..... -0.6 mA mA  
 $V_{OH}$  Logic "1" Voltage Out ..... 2.40 V min.  
 $V_{OL}$  Logic "0" Voltage Out ..... 0.50 V max.  
 $P_{WI}$  Input Pulse Width ..... 40% of Delay min.  
Operating Temperature Range ..... 0° to 70°C  
Storage Temperature Range ..... -65° to +150°C

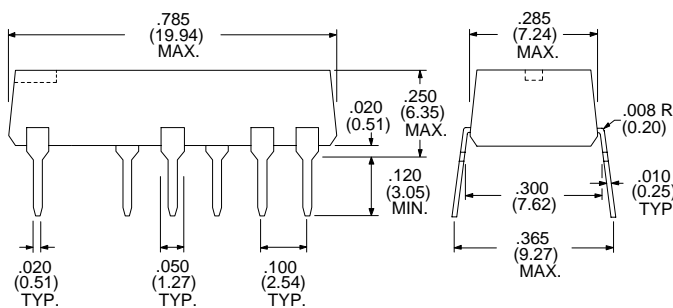
Electrical Specifications at 25°C

74F 5-Tap 14-Pin DIP	74F 5-Tap 8-Pin SIP	Tap Delay Tolerances +/- 5% or 2ns					Tap-to-Tap (ns)
		Tap 1	Tap 2	Tap 3	Tap 4	Tap 5	
FAIDM-7	FSIDM-7	3.0	4.0	5.0	6.0	7 ± 1.0	** 1.0 ± 0.4
FAIDM-9	FSIDM-9	3.0	4.5	6.0	7.5	9 ± 1.0	** 1.5 ± 0.5
FAIDM-11	FSIDM-11	3.0	5.0	7.0	9.0	11 ± 1.0	** 2.0 ± 0.7
FAIDM-13	FSIDM-13	3.0	5.5	8.0	10.5	13 ± 1.5	** 2.5 ± 1.0
FAIDM-15	FSIDM-15	3.0	6.0	9.0	12.0	15 ± 1.5	3 ± 1.0
FAIDM-20	FSIDM-20	4.0	8.0	12.0	16.0	20 ± 2.0	4 ± 1.5
FAIDM-25	FSIDM-25	5.0	10.0	15.0	20.0	25 ± 2.0	5 ± 2.0
FAIDM-30	FSIDM-30	6.0	12.0	18.0	24.0	30 ± 2.0	6 ± 2.0
FAIDM-35	FSIDM-35	7.0	14.0	21.0	28.0	35 ± 2.0	7 ± 2.0
FAIDM-40	FSIDM-40	8.0	16.0	24.0	32.0	40 ± 2.0	8 ± 2.0
FAIDM-45	FSIDM-45	9.0	18.0	27.0	36.0	45 ± 2.25	9 ± 2.0
FAIDM-50	FSIDM-50	10.0	20.0	30.0	40.0	50 ± 2.50	10 ± 2.0
FAIDM-60	FSIDM-60	12.0	24.0	36.0	48.0	60 ± 3.0	12 ± 2.0
FAIDM-75	FSIDM-75	15.0	30.0	45.0	60.0	75 ± 3.75	15 ± 2.5
FAIDM-80	FSIDM-80	16.0	32.0	48.0	64.0	80 ± 4.0	16 ± 2.5
FAIDM-100	FSIDM-100	20.0	40.0	60.0	80.0	100 ± 5.0	20 ± 3.0
FAIDM-125	FSIDM-125	25.0	50.0	75.0	100.0	125 ± 6.25	25 ± 3.0
FAIDM-150	FSIDM-150	30.0	60.0	90.0	120.0	150 ± 7.5	30 ± 3.0
FAIDM-200	FSIDM-200	40.0	80.0	120.0	160.0	200 ± 10.0	40 ± 4.0
FAIDM-250	FSIDM-250	50.0	100.0	150.0	200.0	250 ± 12.5	50 ± 5.0
FAIDM-300	FSIDM-300	60.0	120.0	180.0	240.0	300 ± 15.0	60 ± 6.0
FAIDM-350	FSIDM-350	70.0	140.0	210.0	280.0	350 ± 17.5	70 ± 7.0
FAIDM-400	----	80.0	160.0	240.0	160.0	400 ± 20.0	80 ± 8.0
FAIDM-500	----	100.0	200.0	300.0	400.0	500 ± 25.0	100 ± 10

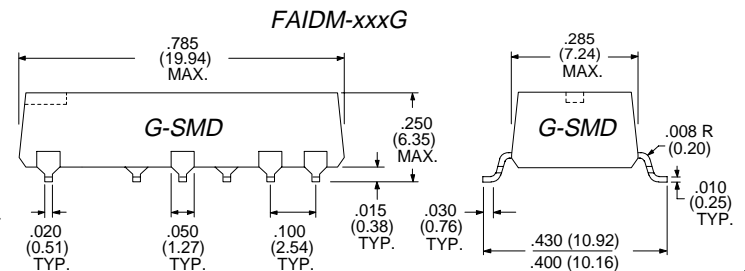
Dimensions in Inches (mm)



FAIDM Series 14-Pin DIP Package



FAIDM Series 14-Pin Gullwing-SMD per Table above add "G" suffix to P/N



Specifications subject to change without notice.

For other values & Custom Designs, contact factory.

www.rhombus-ind.com

sales@rhombus-ind.com

TEL: (714) 898-0960

FAX: (714) 896-0971