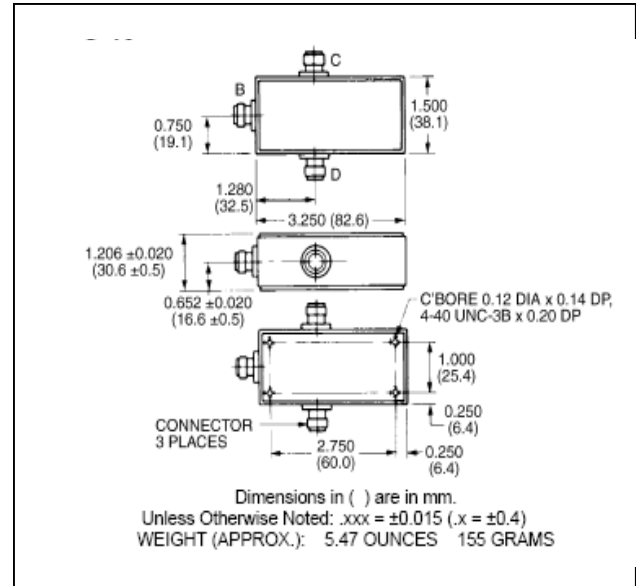


## Features

- Broadband Frequency Range
- Low Loss - Less Than 1.3 dB Max
- VSWR - 1.4:1 Max

## C-19



## Guaranteed Specifications: From -55°C to +85°C

| Frequency Range                |                            | 5-1000 MHz               |
|--------------------------------|----------------------------|--------------------------|
| Insertion Loss (less coupling) | 5-100 MHz<br>100 -1000 MHz | 0.7 dB Max<br>1.4 dB Max |
| Isolation                      | 5-100 MHz<br>100 -1000 MHz | 20 dB Min<br>25 dB Min   |
| Amplitude Balance              | 5-100 MHz<br>100 -1000 MHz | 0.2 dB Max<br>0.5 dB Max |
| VSWR (All Ports)               |                            | 1.4:1 Max                |
| Phase Balance                  | 5-100 MHz<br>100 -1000 MHz | 5° Max<br>2.5° Max       |

## Operating Characteristics

| Parameter                              | Absolute Maximum |
|--|------------------|
| Impedance                              | 50 Ohms Nominal  |
| Maximum Power Rating<br>Or Input Power | 2.0 Watt Max     |
| Internal Load Dissipation              | 0.5 Watt Max     |
| Environmental                          |                  |

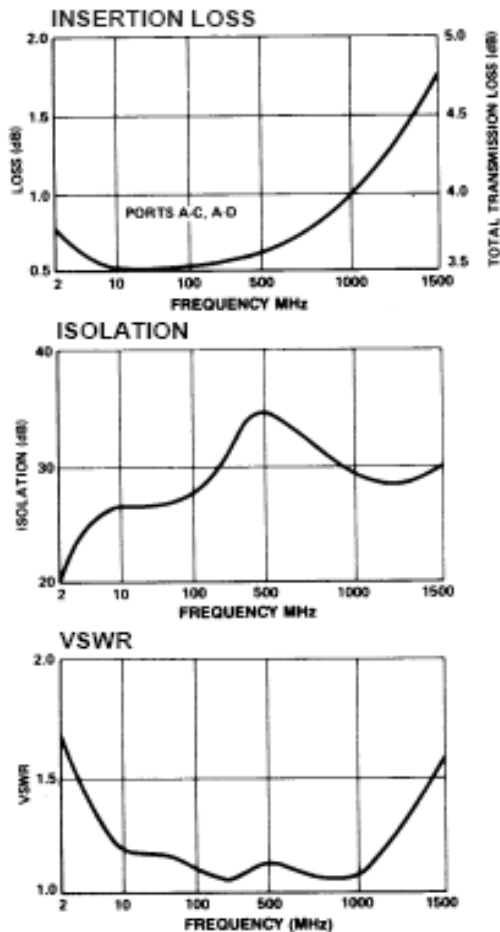
\* All specifications apply with 50 ohm source and load impedance.

# H-81-4

180° Two-Way Power Divider,  
5 - 1000 MHz

Rev. V2

## Typical Performance Curves



## Ordering Information

| Part Number | Package       |
|-------------|---------------|
| H-81-4 N    | Connectorized |
| H-81-4 SMA  | Connectorized |
| H-81-4 TNC  | Connectorized |
| H-81-4 BNC  | Connectorized |

## Functional Diagram

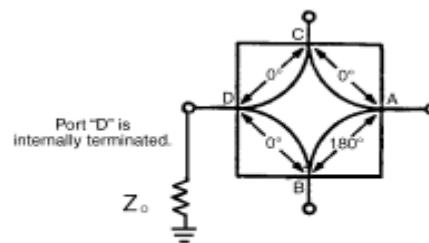


Figure 1. 2-way, In-Phase (180°) Power Divider/Summer, or ISO-T