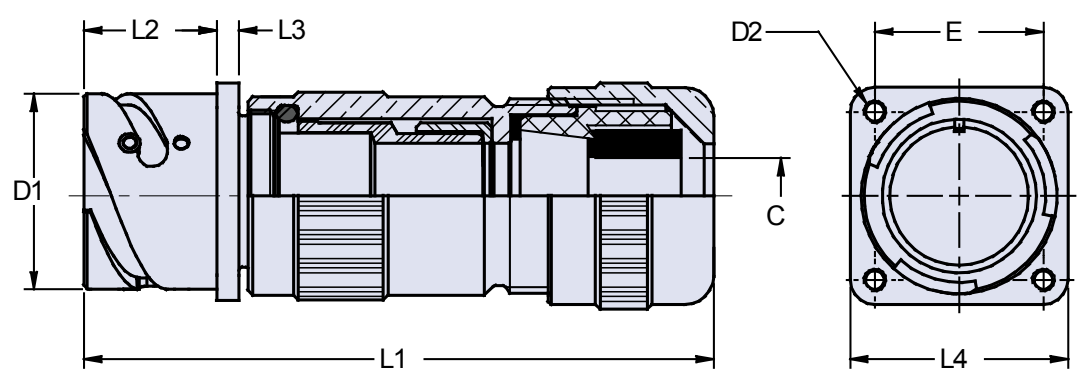




**ITH 030 (EMI) and ITHC 030 (EMI)
Rear Box Mount Receptacle
with Backshell for EMI Shielded and Jacketed Cable**

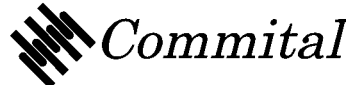
ITH 030 A 28-21 P Y EMI22 XXX

<p>ITH = Plastic Insert and Standard Contacts (See Notes #4, 6)</p> <p>ITHC = Plastic Insert and Hyperboloid Socket Contacts</p> <p>030 = Rear Mounting Receptacle with Threaded Holes</p> <p>Environmental Class A - Non-Environmental R - Environmental</p>	<p>Mod Code Option (See Table II)</p> <p>PHM-EMI Adapter</p> <p>Alternate Insert Rotation (W, X, Y, Z) Omit for Normal (See Page 6)</p> <p>Contact Gender P - Pin S - Socket</p> <p>Shell Size and Insert Arrangement (See Page 7)</p>
---	--



Application Notes:

1. Box mount receptacle connector with square flange for rear panel mounting and backshell to be used with shielded jacket cables. Threaded mounting holes.
2. Environmental class A (non-environmental) not supplied with grommet; Class R (environmental) supplied with grommet.
3. Standard shell materials configuration consists of aluminum alloy with cadmium conductive plating and black passivation.
4. Contact material consists of copper alloy with gold plating.
5. A broad range of other front and rear connector accessories are available. See our website and/or contact the factory for complete information.
6. Standard insert material is Low fire hazard plastic UL94V0, IAW Article 3, NFF16-102, 356833.



**ITH 030 (EMI) and ITHC 030 (EMI)
Rear Box Mount Receptacle
with Backshell for EMI Shielded and Jacketed Cable**



TABLE I: DIMENSIONS

Shell size	EMI size	C		D1 +0 -0.15	D2 thread	E ±0.1	L1 Max	L2 +0.4 -0	L3 ±0.2	L4 ±0.3
		Min	Max							
18	18	2.0	16.5	30.8	M4	27.0	85.0	23.05	4.0	35.0
20	18	2.0	16.5	34.2	M4	29.4	85.0	23.05	4.0	38.0
22	18	2.0	16.5	37.4	M4	31.8	85.0	23.05	4.0	41.0
24	18	2.0	16.5	40.9	M4	34.9	90.0	23.05	4.0	44.5
28	22	15.0	20.0	46.7	M5	39.7	90.0	24.05	4.0	50.8
	24	19.0	24.0							
32	22	15.0	20.0	53.4	M5	44.5	100.0	24.05	4.0	57.0
	24	19.0	24.0							
36	35	23.0	35.0	59.6	M5	49.2	110.0	24.05	4.0	63.5
40	35	23.0	35.0	65.5	M5	55.5	110.0	24.05	4.0	69.9

TABLE II: MODIFICATION CODES

CONTACT OPTIONS	
Sym	Description
B0	Connector less contacts
Omit for standard version (Gold Plated Copper Alloy Contacts Supplied)	
FINISH OPTIONS	
Sym	Description
F2	Bright Nickel Plating
F6	Black Electrodeposited Paint
F8	Olive Drab Zn-Co Plating
Omit for standard version (Cad free / black passivation Finish)	

